

(MONROE)

UNITED STATES  
DEPARTMENT OF THE INTERIOR  
GEOLOGICAL SURVEY

121°52'30"  
47°45'

585000m E.

SULTAN 12 MI.

R. 7 E. R. 8 E.

50'

(SULTAN)

47°30'

LAKE JOY QUADRANGLE  
WASHINGTON—KING CO.  
7.5 MINUTE SERIES (TOPOGRAPHIC)

121°45'  
47°45'

1770 000 FEET

5288000m N.

42°30'

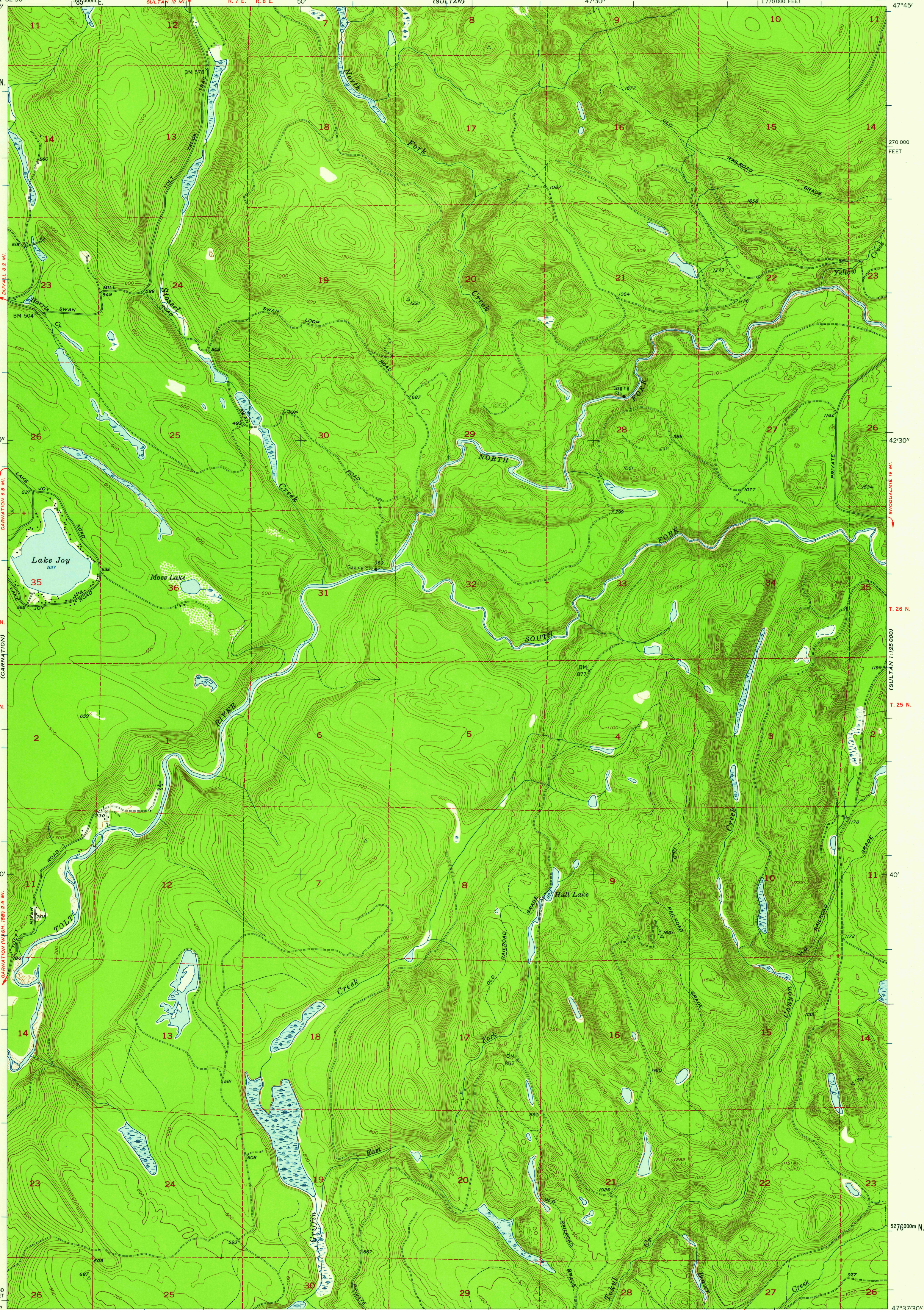
T. 26 N.

T. 25 N.

40'

47°37'30"

(FALL CITY)



Mapped, edited, and published by the Geological Survey

Control by USGS and USC&GS

Topography from aerial photographs by multiplex methods

Aerial photographs taken 1952. Field check 1953

Polyconic projection. 1927 North American datum

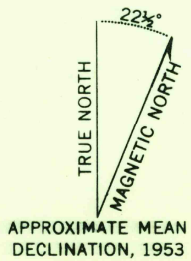
10,000-foot grid based on Washington coordinate system, north zone

Dashed land lines indicate approximate locations

Unchecked elevations are shown in brown

1000-meter Universal Transverse Mercator grid ticks,

zone 10, shown in blue



APPROXIMATE MEAN  
DECLINATION, 1953

SCALE 1:24000

1 0 1000 2000 3000 4000 5000 6000 7000 FEET

1 5 0 1 KILOMETER

CONTOUR INTERVAL 20 FEET

DATUM IS MEAN SEA LEVEL



QUADRANGLE LOCATION

ROAD CLASSIFICATION

Heavy-duty 4 LANE 16 LANE Light-duty

Medium-duty 4 LANE 16 LANE Unimproved dirt

U. S. Route State Route

LAKE JOY, WASH.

N 4737.5—W 12145/7.5

1953

U.S.G.S.  
FILE COPY  
TOPOGRAPHIC DIVISION

APR 14 1955

3976