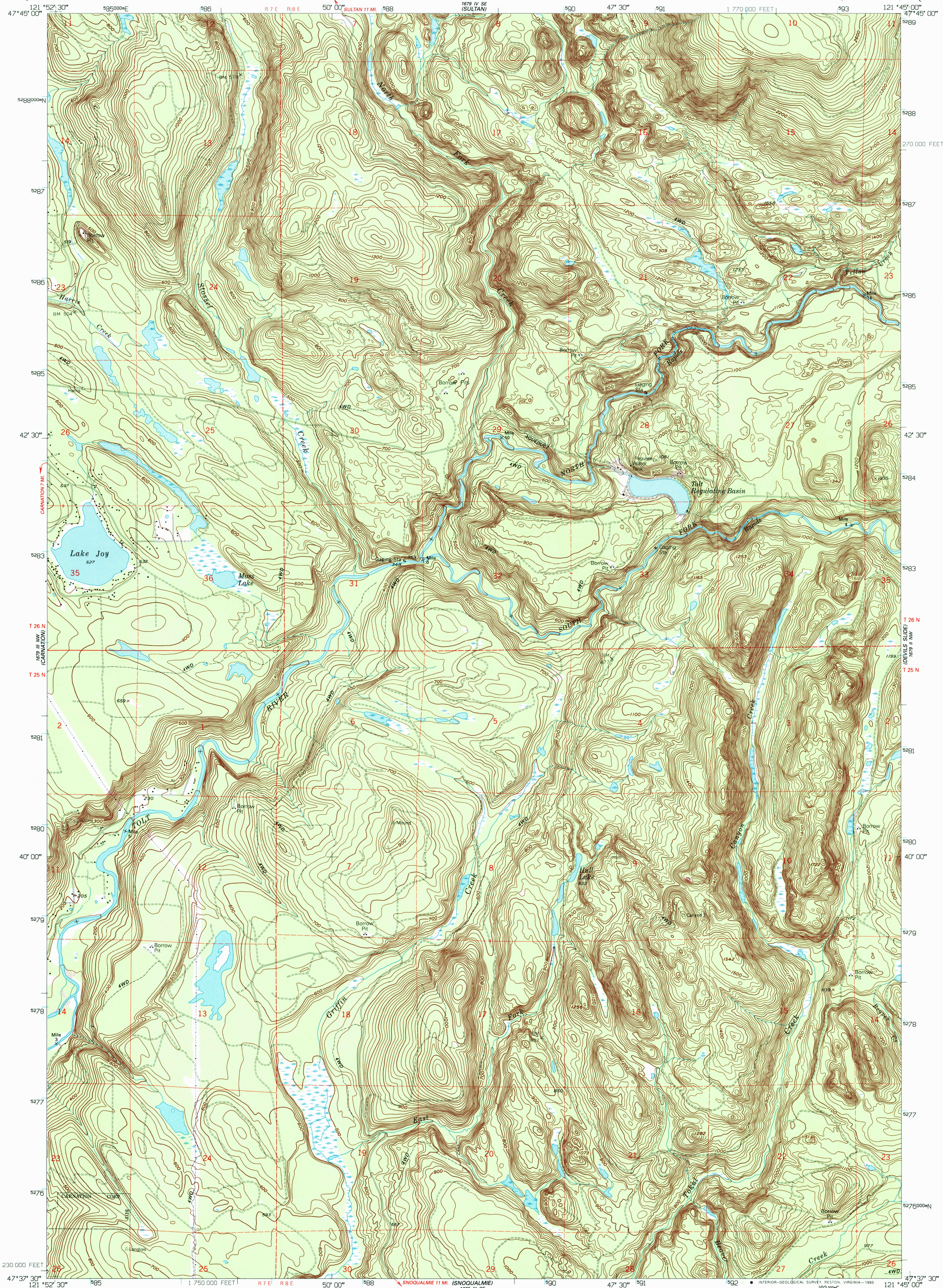


1679 III NW  
1679 III NW  
(CARNATION)

UNITED STATES  
DEPARTMENT OF THE INTERIOR  
GEOLOGICAL SURVEY

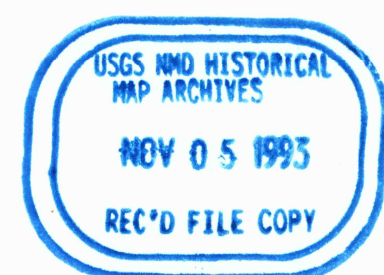
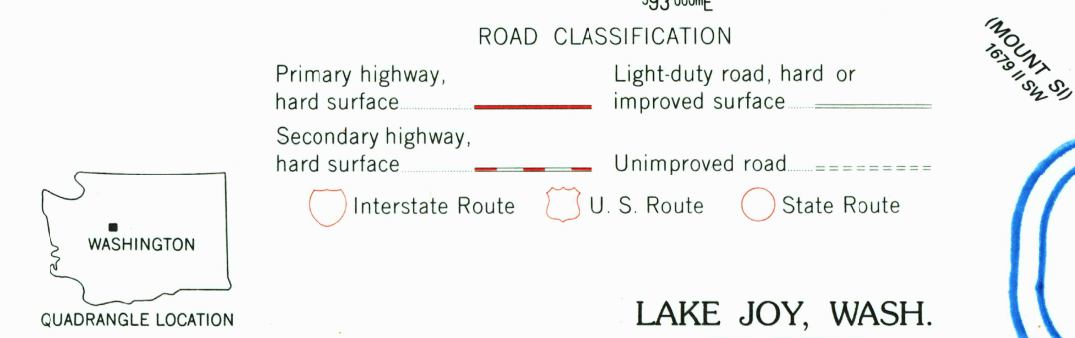
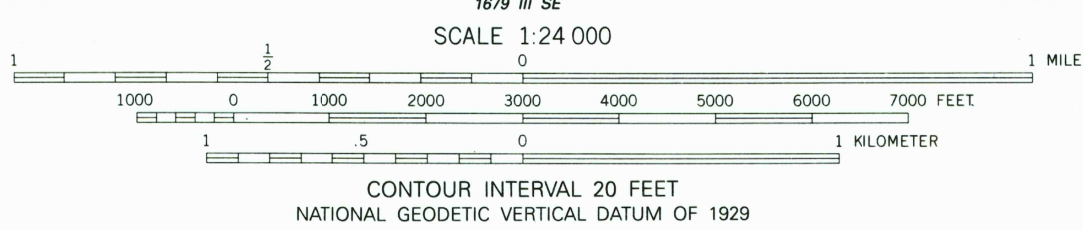
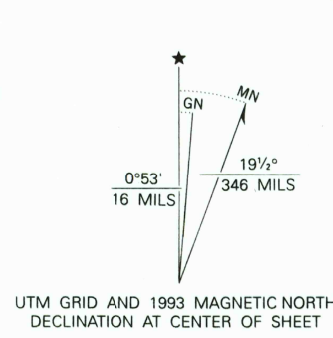
LAKE JOY QUADRANGLE  
WASHINGTON-KING CO.  
7.5 MINUTE SERIES (TOPOGRAPHIC)

1679 III SE  
1679 III SE  
(GOLD BARN)



1679 III NW  
1679 III NW  
(CARNATION)

Produced by the United States Geological Survey  
Control by USGS and NOS/NOAA  
Compiled from aerial photographs taken 1952. Revised from aerial  
photographs taken 1986 and other sources. Field checked 1990  
Map edited 1993  
1927 North American Datum (NAD 27). Projection and  
10000-foot ticks: Washington Coordinate System, north zone  
(Lambert Conformal Conic)  
Blue 1000-meter Universal Transverse Mercator ticks, zone 10  
North American Datum of 1983 (NAD 83) is shown by dashed  
corner ticks. The values of the shift between NAD 27 and NAD 83  
for 7.5-minute intersections are given in USGS Bulletin 1875



FOR SALE BY U.S. GEOLOGICAL SURVEY  
DENVER, COLORADO 80225, OR RESTON, VIRGINIA 22092  
A FOLDER DESCRIBING TOPOGRAPHIC MAPS AND SYMBOLS IS AVAILABLE ON REQUEST

LAKE JOY, WASH.  
47121-F7-TF-024

1993

DMA 1679 III NE-SERIES V891