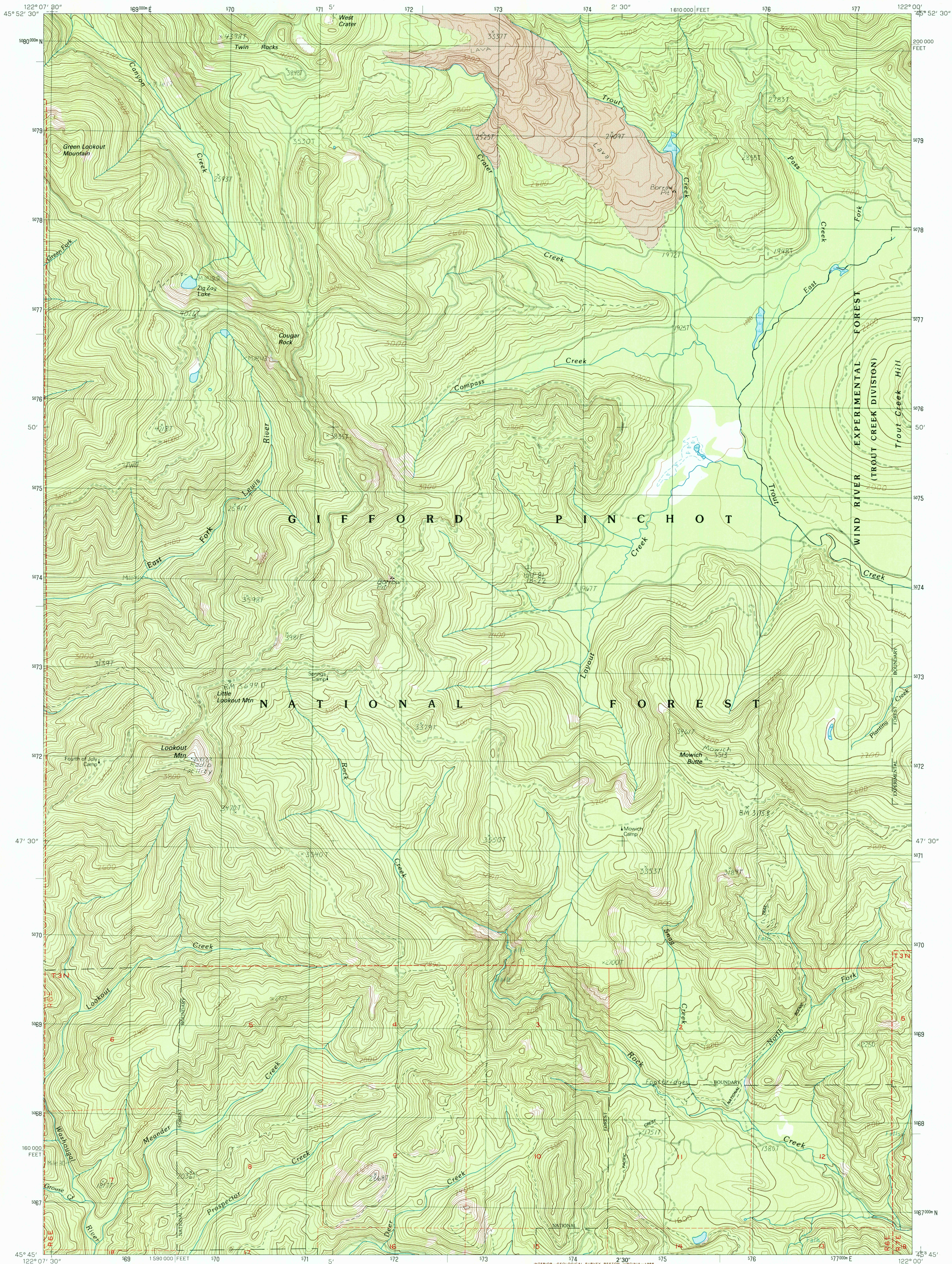


UNITED STATES
DEPARTMENT OF THE INTERIOR
GEOLOGICAL SURVEY

LOOKOUT MTN. QUADRANGLE
WASHINGTON - SKAMANIA CO.
7.5 MINUTE SERIES (TOPOGRAPHIC)



PRODUCED BY THE UNITED STATES GEOLOGICAL SURVEY
CONTROL BY THE UNITED STATES GEOLOGICAL SURVEY
COMPILED FROM AERIAL PHOTOGRAPHS TAKEN
FIELD CHECKED 1984. MAP EDITED 1986
PROJECTION LAMBERT CONFORMAL CONIC
GRID: 1000-METER UNIVERSAL TRANSVERSE MERCATOR ZONE 10
10,000-FOOT STATE GRID TICS WASHINGTON SOUTH ZONE
UTM GRID DECLINATION 1930 EAST
1985 MAGNETIC NORTH DECLINATION 1930 EAST
VERTICAL DATUM NATIONAL GEODETIC VERTICAL DATUM OF 1929
HORIZONTAL DATUM 1927 NORTH AMERICAN DATUM
To place on the predicted North American Datum of 1983,
move the projection lines as shown by dashed corner ticks
(22 meters north / 92 meters east)
There may be private inholdings within the boundaries of any
Federal and State Reservations shown on this map
Where omitted, land lines have not been established
No distinction made between houses, barns, and other buildings

PROVISIONAL MAP
Produced from original
manuscript drawings. Informa-
tion shown as of date of
photography.

SCALE 1:24 000
CONTOUR INTERVAL 40 FEET
CONTROL ELEVATIONS SHOWN TO THE NEAREST 0.1 FOOT
OTHER ELEVATIONS SHOWN TO THE NEAREST FOOT
To convert meters to feet multiply by 3.2808
To convert feet to meters multiply by 0.3048
THIS MAP COMPLIES WITH NATIONAL MAP ACCURACY STANDARDS
FOR SALE BY U. S. GEOLOGICAL SURVEY, DENVER, COLORADO 80225, OR RESTON, VIRGINIA 22092

1	2	3
4	5	6
7	8	9

QUADRANGLE LOCATION

ADJOINING 7.5' QUADRANGLE NAMES

ROAD LEGEND
Improved Road
Unimproved Road
Trail
Interstate Route
U.S. Route
State Route
LOOKOUT MTN., WASH.
PROVISIONAL EDITION 1986
45122-G1-TF-024

USGS NHD HISTORICAL MAP
JUN 27 1986
REC'D FILE COPY