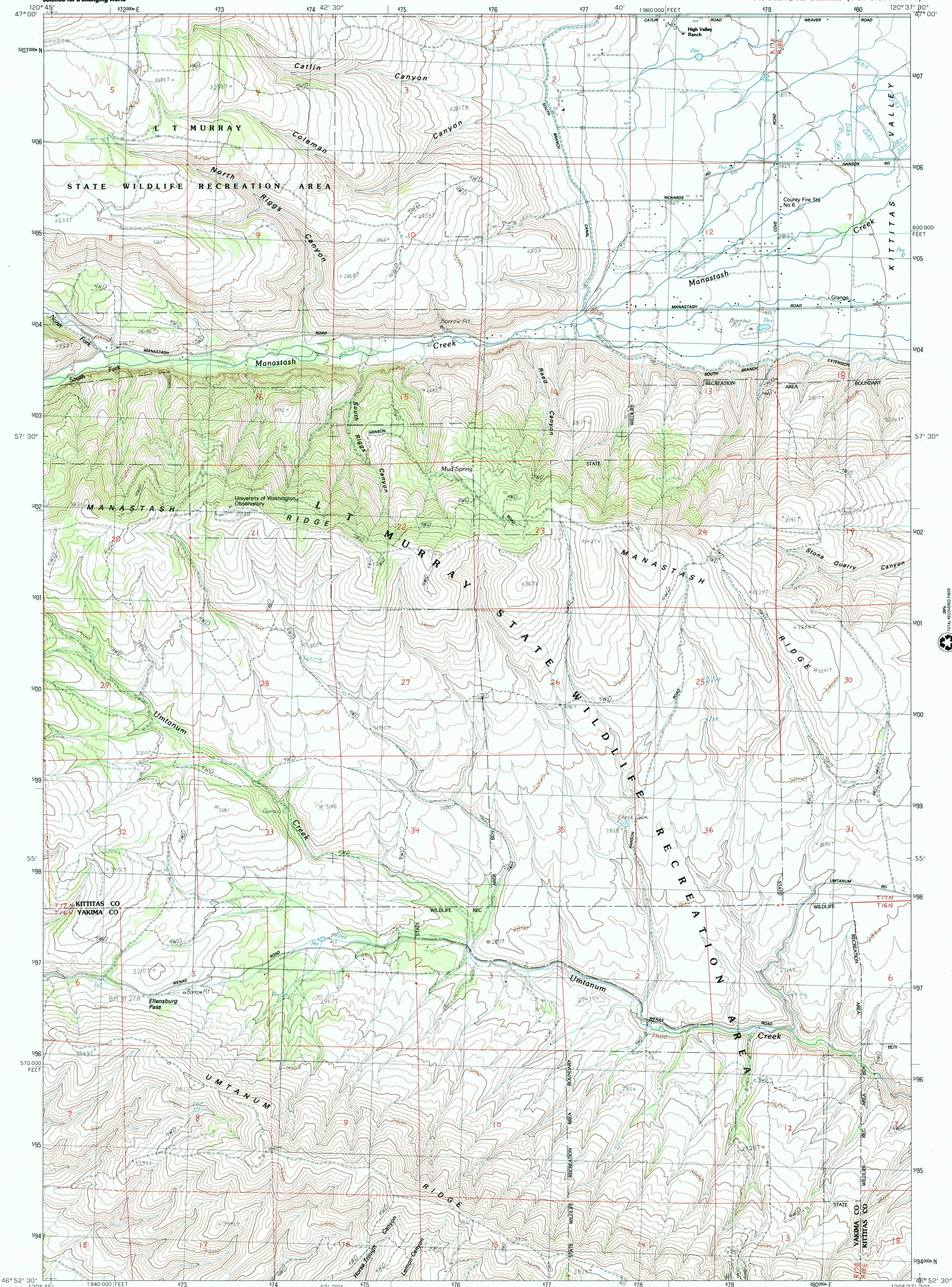




U.S. DEPARTMENT OF THE INTERIOR  
U.S. GEOLOGICAL SURVEY

MANASTASH CREEK QUADRANGLE  
WASHINGTON  
7.5 MINUTE SERIES (TOPOGRAPHIC)

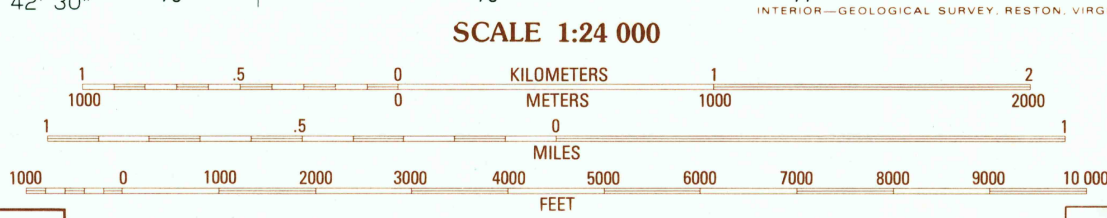


RECEIVED  
DEC 31 2000

USGS NWU  
HISTORICAL MAP ARCHIVES

PRODUCED BY THE UNITED STATES GEOLOGICAL SURVEY  
CONTROL BY USGS, NOS/NOAA  
COMPILED FROM AERIAL PHOTOGRAPHS TAKEN ..... 1956  
FIELD CHECKED ..... 1958  
LIMITED REVISION FROM AERIAL PHOTOGRAPHS TAKEN ..... 1981  
FIELD CHECKED ..... 1983, MAP EDITED ..... 1984  
PROJECTION ..... LAMBERT CONFORMAL CONIC  
GRID: 1000-METER UNIVERSAL TRANSVERSE MERCATOR, ZONE 10  
10,000-FOOT STATE GRID TICS ..... WASHINGTON, SOUTH ZONE  
UTM GRID DECLINATION ..... 1983  
1980 MAGNETIC NORTH DECLINATION ..... 20° EAST  
VERTICAL DATUM, NATIONAL GEODETIC VERTICAL DATUM OF 1929  
HORIZONTAL DATUM ..... 1927 NORTH AMERICAN DATUM  
To place on the predicted North American Datum of 1983,  
move the projection lines as shown by dashed corner ticks  
(20 meters north/89 meters east)  
There may be private inholdings within the boundaries of any  
Federal and State Reservations shown on this map

**PROVISIONAL MAP**  
Produced from original  
manuscript drawings. Infor-  
mation shown as of date of  
field check.



**SCALE 1:24 000**  
**CONTOUR INTERVAL 40 FEET**  
CONTROL ELEVATIONS SHOWN TO THE NEAREST 0.1 FOOT  
OTHER ELEVATIONS SHOWN TO THE NEAREST FOOT  
To convert meters to feet multiply by 3.2808  
To convert feet to meters multiply by 0.3048  
THIS MAP COMPLES WITH NATIONAL MAP ACCURACY STANDARDS  
FOR SALE BY U.S. GEOLOGICAL SURVEY  
P.O. BOX 25286, DENVER, COLORADO 80225  
A FOLDER DESCRIBING TOPOGRAPHIC MAPS AND SYMBOLS IS AVAILABLE ON REQUEST

1	2	3
4	5	6
7	8	

1 Tanum Canyon  
2 Thorp  
3 Ellensburg North  
4 Hudson Creek  
5 Ellensburg South  
6 Milk Canyon  
7 Wenas Lake  
8 The Cottonwoods

ADJOINING 7.5 QUADRANGLE NAMES

**ROAD LEGEND**  
Improved Road .....  
Unimproved Road .....  
Trail .....  
Interstate Route ..... U.S. Route ..... State Route

**MANASTASH CREEK, WASH.**  
**PROVISIONAL EDITION 1984**

46120-116-TF-024

