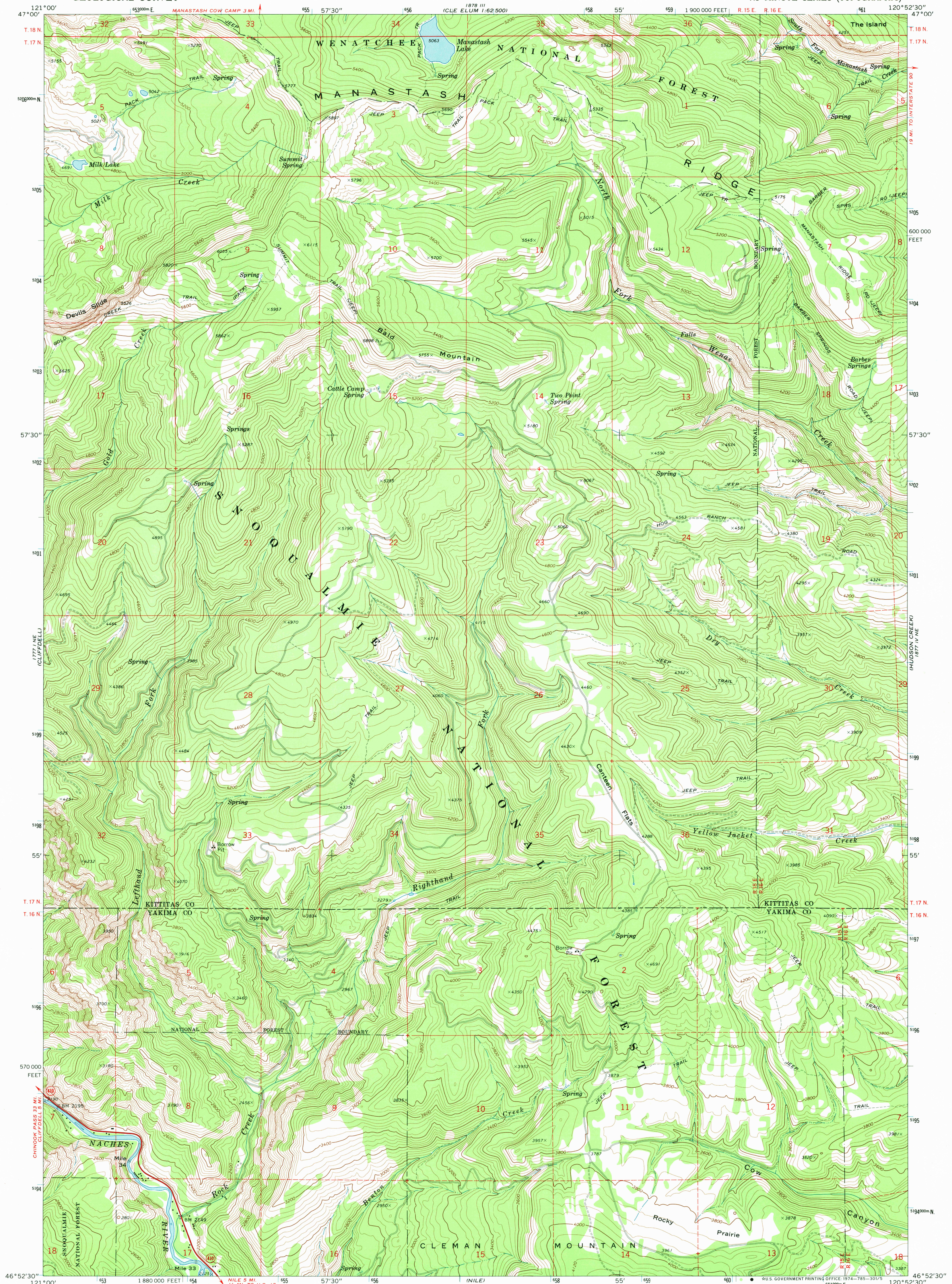
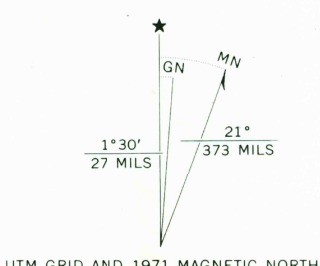


UNITED STATES  
DEPARTMENT OF THE INTERIOR  
GEOLOGICAL SURVEY

MANASTASH LAKE QUADRANGLE  
WASHINGTON  
7.5 MINUTE SERIES (TOPOGRAPHIC)



Maped, edited, and published by the Geological Survey  
Control by USGS and USC&GS  
Topography by photogrammetric methods from aerial  
photographs taken 1970. Field checked 1971  
Projection and 10,000-foot grid ticks: Washington coordinate  
system, south zone (Lambert conformal conic)  
1000-meter Universal Transverse Mercator grid ticks,  
zone 10, shown in blue. 1927 North American datum



SCALE 1:24,000  
(NILE) 1877 IV SW  
CONTOUR INTERVAL 40 FEET  
DATUM IS MEAN SEA LEVEL



ROAD CLASSIFICATION  
Primary highway, hard surface  
Secondary highway, hard surface  
Unimproved road  
Interstate Route  
U.S. Route  
State Route

USGS  
Historical File  
Topographic Division  
MANASTASH LAKE, WASH.  
N4652.5-W12052.5/7.5  
1971

AMS 1877 IV NW—SERIES V891

Danger  
3000  
50 plan