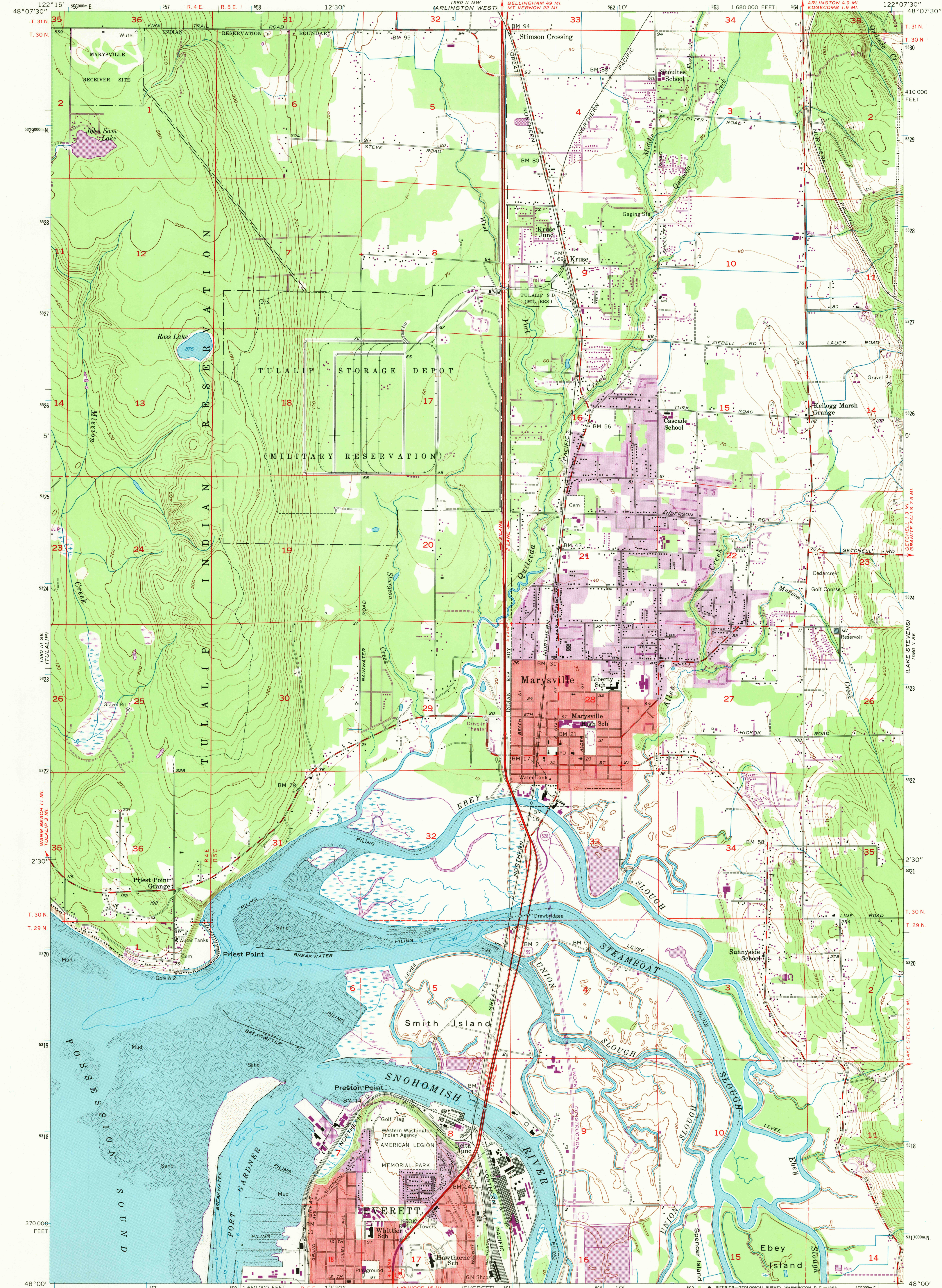


1580 II NE
STARWOOD

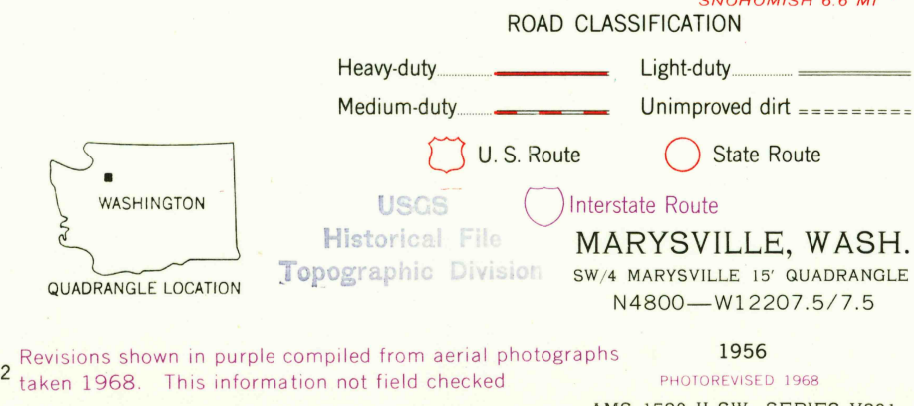
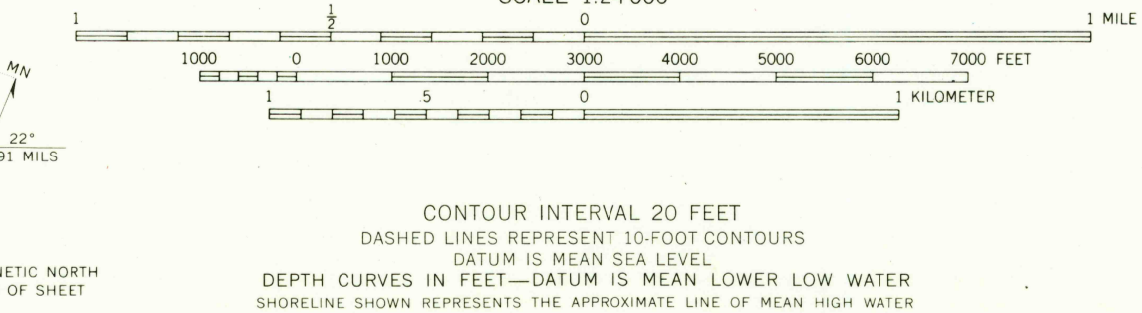
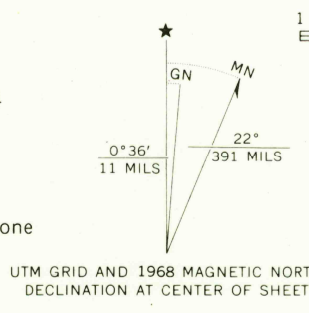
UNITED STATES
DEPARTMENT OF THE INTERIOR
GEOLOGICAL SURVEY

MARYSVILLE QUADRANGLE
WASHINGTON-SNOHOMISH CO.
7.5 MINUTE SERIES (TOPOGRAPHIC)
SW 4 MARYSVILLE 15' QUADRANGLE
ARLINGTON 4.9 MI
EDGEcomb 1.9 MI

1580 II NE
ARLINGTON 4.9 MI
EDGEcomb 1.9 MI



Mapped, edited, and published by the Geological Survey
Control by USGS and USC&GS
Topography from aerial photographs by multiplex methods
and by planetable surveys 1956. Aerial photographs taken 1954
Hydrography compiled from USC&GS manuscript T-11482
and supplementary information
Polyconic projection. 1927 North American datum
10,000-foot grid based on Washington coordinate system, north zone
1,000-meter Universal Transverse Mercator grid ticks,
zone 10, shown in blue
Red tint indicates areas in which only
landmark buildings are shown
Dashed land lines indicate approximate locations



U.S.G.S.
FILE COPY
TOPOGRAPHIC DIVISION
3195
DEC 8 1969
1966
AMS 1580 II SW—SERIES V891