

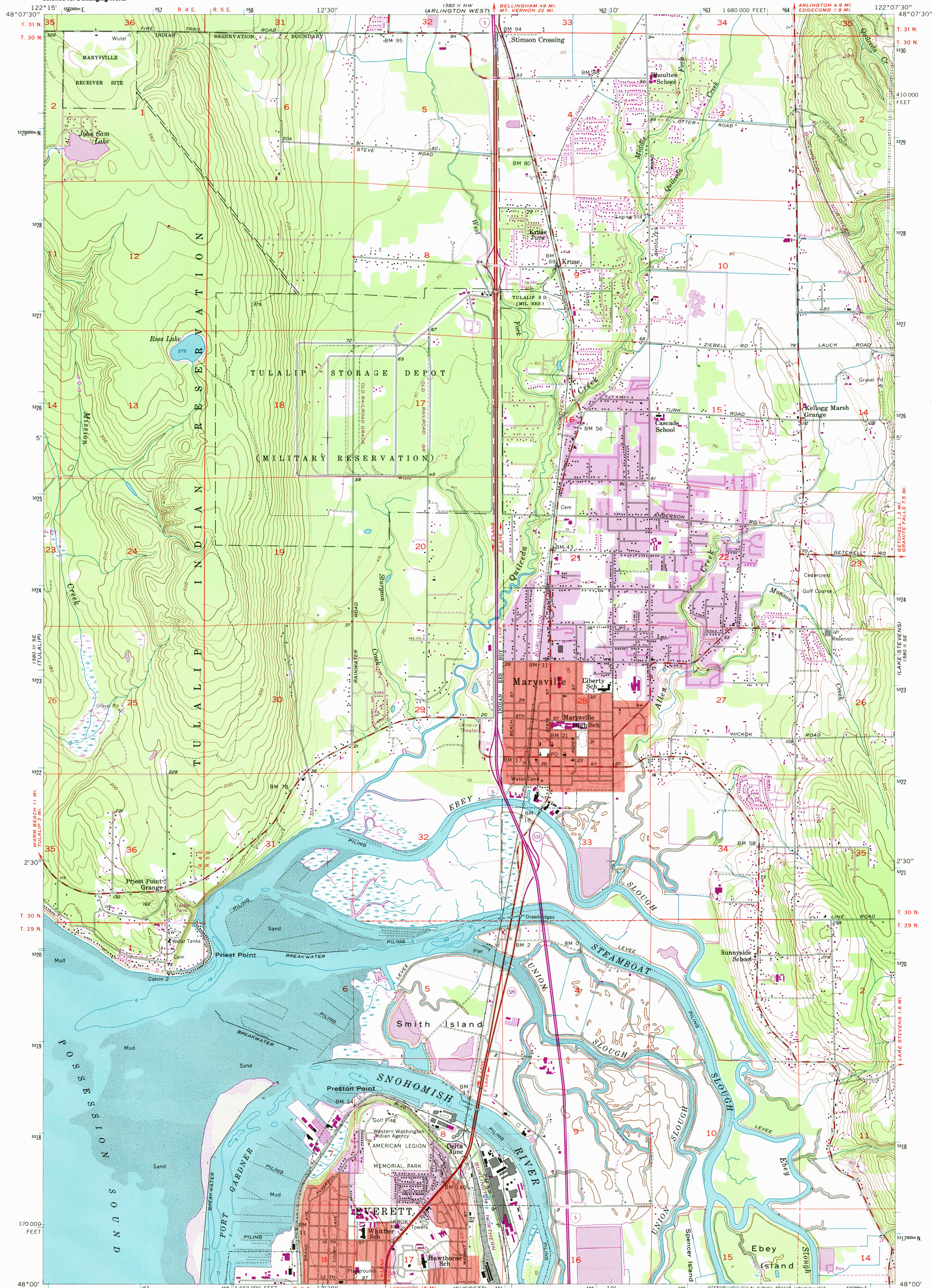
1:50,000 (S. R. N. 055)



U.S. DEPARTMENT OF THE INTERIOR
U.S. GEOLOGICAL SURVEY

MARYSVILLE QUADRANGLE
WASHINGTON-SNOHOMISH CO.
7.5 MINUTE SERIES (TOPOGRAPHIC)

1:50,000 (S. R. N. 055)



1:50,000 (S. R. N. 055)

Mapped, edited, and published by the Geological Survey

Control by USGS and USC&GS

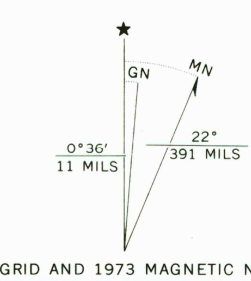
Topography from aerial photographs by multiplex methods and by plane-table surveys 1956. Aerial photographs taken 1954

Hydrography compiled from USC&GS manuscript T-11482 and supplementary information

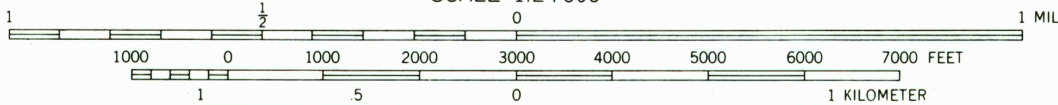
Polyconic projection. 1927 North American datum
10,000-foot grid based on Washington coordinate system, north zone
1,000-meter Universal Transverse Mercator grid ticks, zone 10, shown in blue

Red tint indicates areas in which only landmark buildings are shown

Dashed land lines indicate approximate locations



20% TOTAL RECOVERED FIBER



CONTOUR INTERVAL 20 FEET

DASHED LINES REPRESENT 10-FOOT CONTOURS
NATIONAL GEODETIC VERTICAL DATUM OF 1929
DEPTH CURVES IN FEET-DATUM IS MEAN LOWER LOW WATER
SHORELINE SHOWN REPRESENTS THE APPROXIMATE LINE OF MEAN HIGH WATER
THE MEAN RANGE OF TIDE IS APPROXIMATELY 7 FEET

THIS MAP COMPLIES WITH NATIONAL MAP ACCURACY STANDARDS
FOR SALE BY U.S. GEOLOGICAL SURVEY, P.O. BOX 25286, DENVER, COLORADO 80225
A FOLDER DESCRIBING TOPOGRAPHIC MAPS AND SYMBOLS IS AVAILABLE ON REQUEST



QUADRANGLE LOCATION

Revisions shown in purple compiled from aerial photographs taken 1968 and 1973. This information not field checked
Purple tint indicates extension of urban areas

ROAD CLASSIFICATION

Heavy-duty ——— Light-duty ———
Medium-duty ——— Unimproved dirt ———
Interstate Route ——— State Route ———

MARYSVILLE, WASH.

N4800—W12207.5/7.5

1956

PHOTOREVISED 1968 AND 1973
AMS 1580 II SW—SERIES V891

RECEIVED

APR 30 2003

USGS

