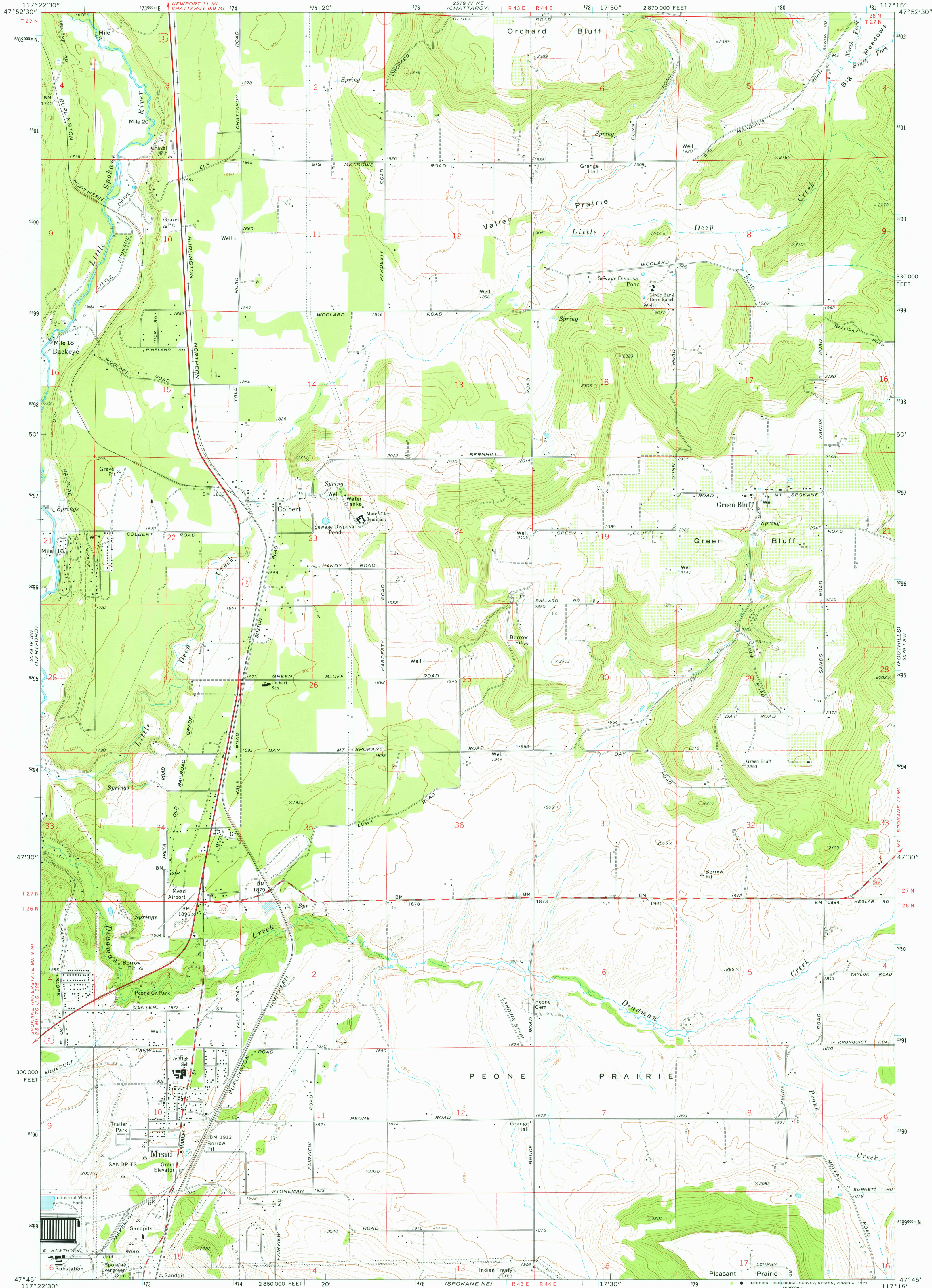


2579 IV NW
(DEER PARK)

UNITED STATES
DEPARTMENT OF THE INTERIOR
GEOLOGICAL SURVEY

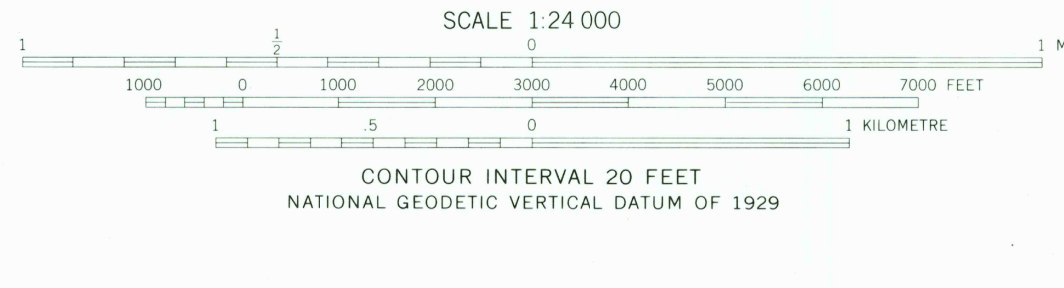
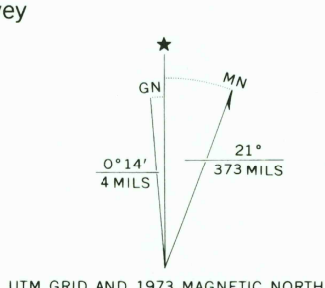
MEAD QUADRANGLE
WASHINGTON-SPOKANE CO.
7.5 MINUTE SERIES (TOPOGRAPHIC)
SE/4 DEER PARK 15' QUADRANGLE

2579 I NW
(MT. KIT CARSON)



(SPOKANE NW)
2579 III NW

Mapped, edited, and published by the Geological Survey
Control by USGS and NOS/NOAA
Topography by photogrammetric methods from aerial
photographs taken 1972. Field checked 1973
Projection and 10,000-foot grid ticks: Washington coordinate
system, north zone (Lambert conformal conic)
1000-metre Universal Transverse Mercator grid ticks,
zone 11, shown in blue. 1927 North American datum
Fine red dashed lines indicate selected fence lines



ROAD CLASSIFICATION
Primary highway, hard surface
Secondary highway, hard surface
Interstate Route
U. S. Route
State Route
Light-duty road, hard or improved surface
Unimproved road
MEAD, WASH.
SE/4 DEER PARK 15' QUADRANGLE
N4745-W11715/7.5

USGS
Historical File
Topographic Division
1973
AMS 2579 IV SE-SERIES V891

(GREENACRES)
2579 I NW

MAY 0 3 1977

2650