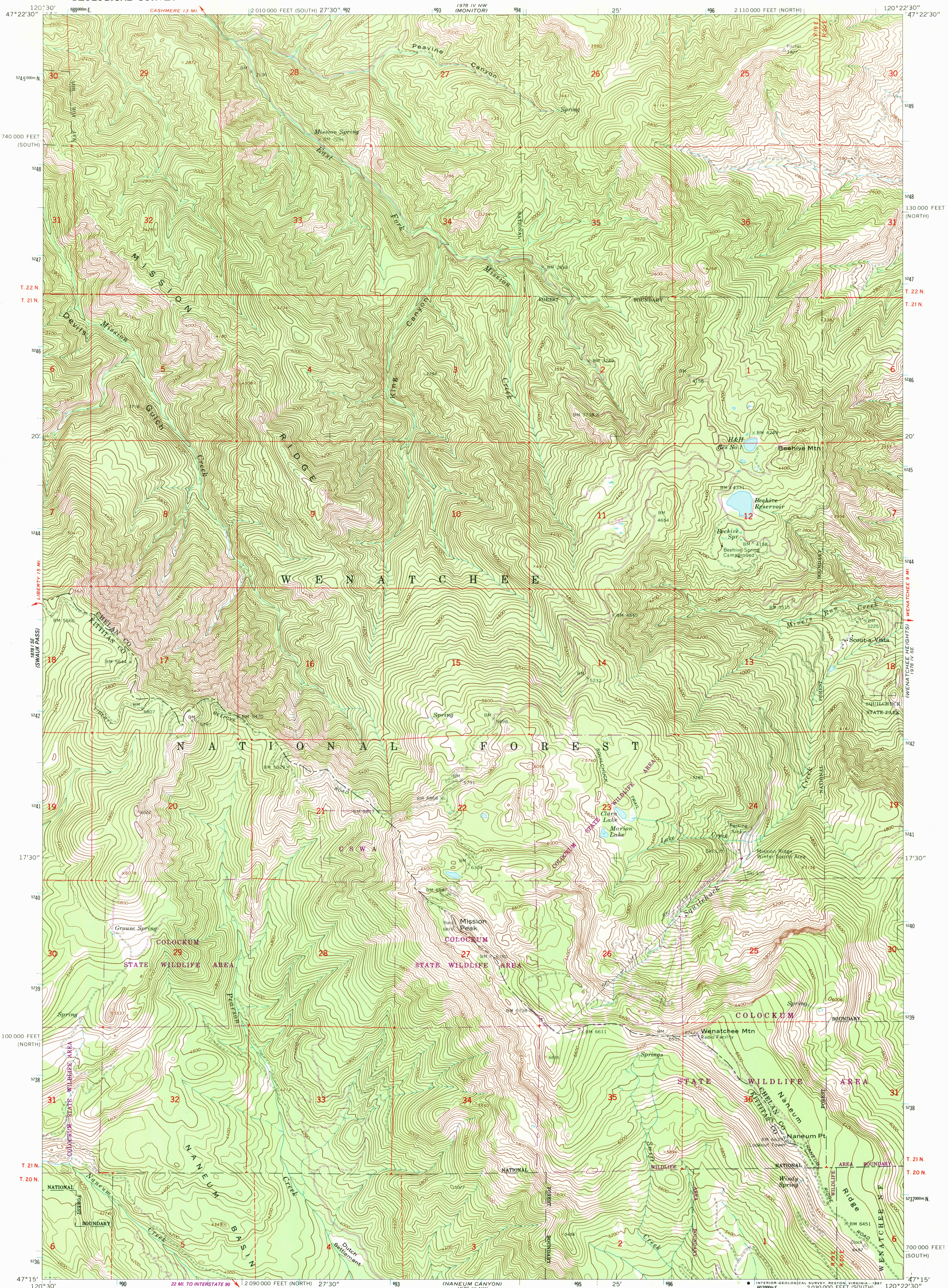


UNITED STATES  
DEPARTMENT OF THE INTERIOR  
GEOLOGICAL SURVEY

MISSION PEAK QUADRANGLE  
WASHINGTON  
7.5 MINUTE SERIES (TOPOGRAPHIC)



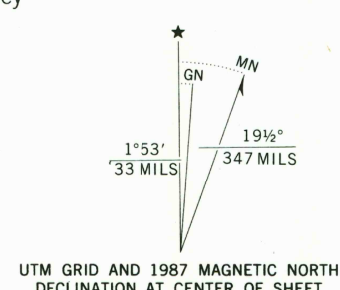
Mapped, edited, and published by the Geological Survey  
Control by USGS, NOS/NOAA, and USCE

Topography by photogrammetric methods from aerial  
photographs taken 1964-65. Field checked 1966

Polycyclic projection. 1927 North American Datum  
10,000-foot grids based on Washington coordinate system,  
north and south zones  
1000-meter Universal Transverse Mercator grid ticks,  
zone 10, shown in blue

To place on the predicted North American Datum 1983  
move the projection lines 20 meters north and  
88 meters east as shown by dashed corner ticks

There may be private inholdings within the boundaries  
of the National or State reservations shown on this map



SCALE 1:24 000  
1 1000 2000 3000 4000 5000 6000 7000 FEET  
1 5 10 15 20 25 30 35 40 45 50 KILOMETER  
CONTOUR INTERVAL 40 FEET  
NATIONAL GEODETIC VERTICAL DATUM OF 1929

THIS MAP COMPLIES WITH NATIONAL MAP ACCURACY STANDARDS  
FOR SALE BY U. S. GEOLOGICAL SURVEY, DENVER, COLORADO 80225, OR RESTON, VIRGINIA 22092  
A FOLDER DESCRIBING TOPOGRAPHIC MAPS AND SYMBOLS IS AVAILABLE ON REQUEST

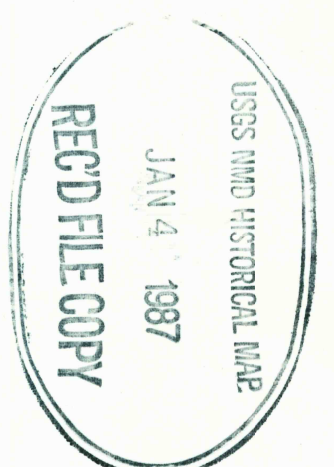


ROAD CLASSIFICATION  
Light-duty ————— Unimproved dirt - - - - -

MISSION PEAK, WASH.  
47120-C4-TF-024

Revisions shown in purple and woodland  
compiled from aerial photographs taken 1983  
and other source data. Partial field check  
by U. S. Forest Service. Map edited 1987

1966  
PHOTOREVISED 1987  
DMA 1978 IV SW-SERIES V891



USGS (IND) HISTORICAL MAP  
JAN 4 1987