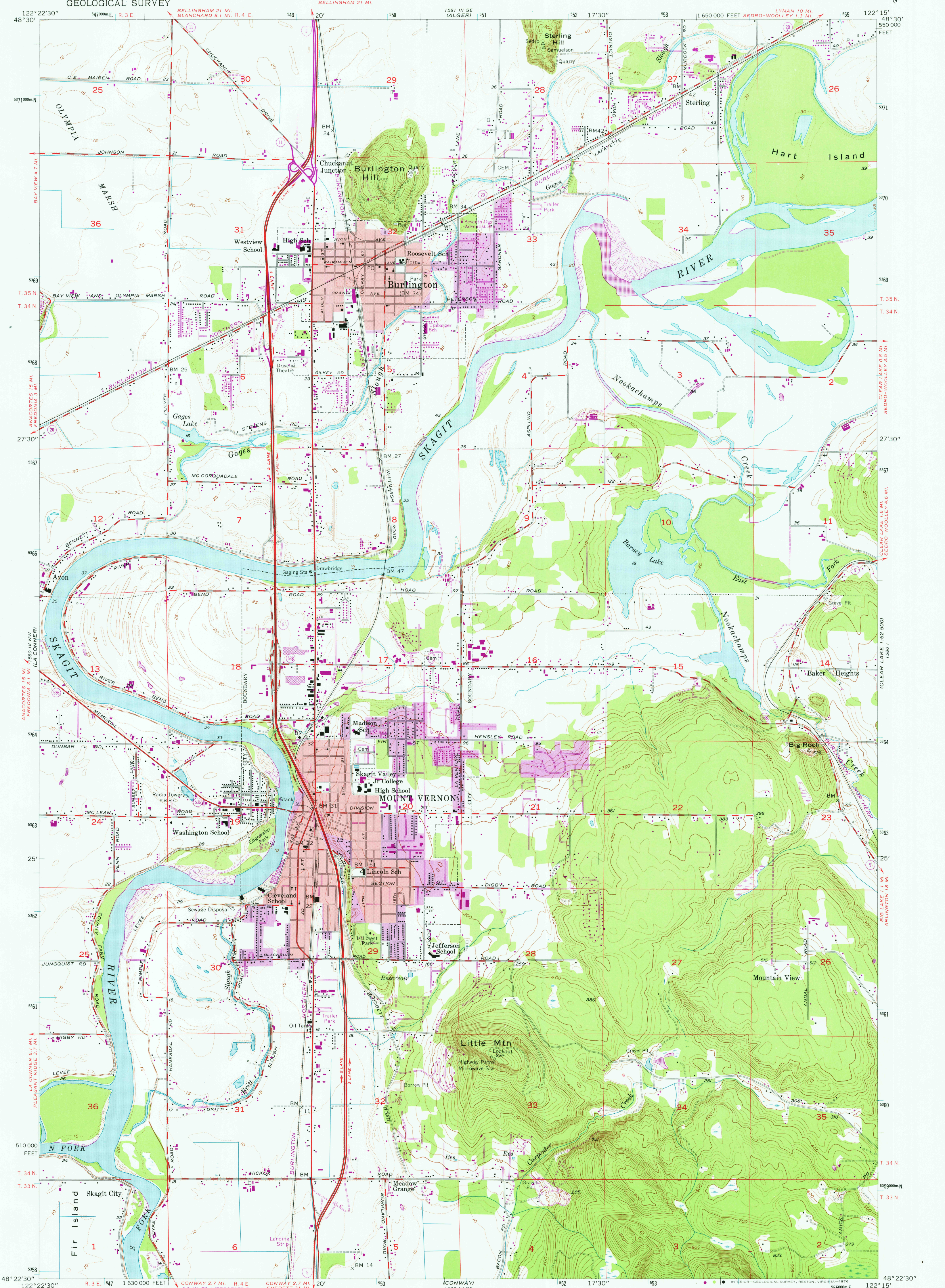


1581 IV SW
(UTS/LADY)
1581 IV SW
(UTS/LADY)

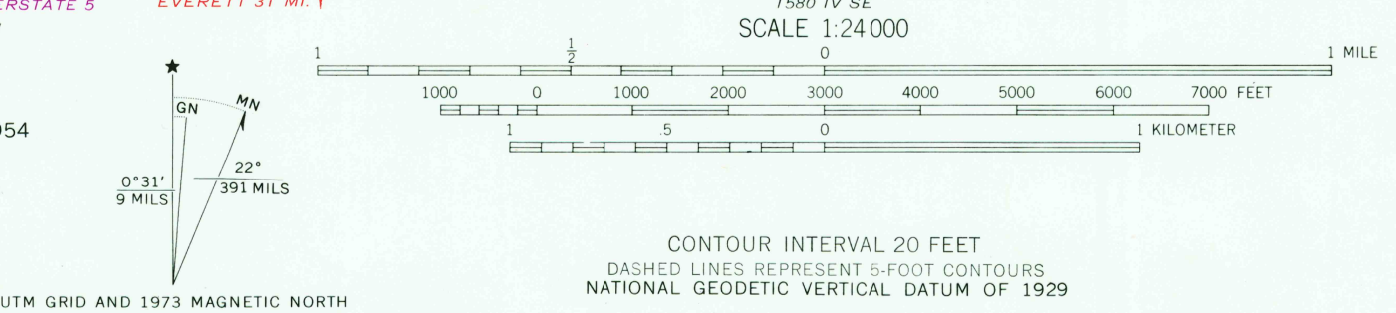
UNITED STATES
DEPARTMENT OF THE INTERIOR
GEOLOGICAL SURVEY

MOUNT VERNON QUADRANGLE
WASHINGTON-SKAGIT CO.
7.5 MINUTE SERIES (TOPOGRAPHIC)

1581 IV
WICKERSHAM 1:62,500



Mapped, edited, and published by the Geological Survey
Control by USGS and USC&GS
Topography from aerial photographs by multiplex methods
and by planetable surveys 1956. Aerial photographs taken 1954
Polyconic projection. 1927 North American datum
10,000-foot grid based on Washington coordinate system,
north zone
1000-meter Universal Transverse Mercator grid ticks,
zone 10, shown in blue
Red tint indicates areas in which only
landmark buildings are shown
Revisions shown in purple compiled from aerial photographs
taken 1968 and 1973. This information not field checked
Purple tint indicates extension of urban areas



ROAD CLASSIFICATION

Heavy-duty	Light-duty
Medium-duty	Unimproved dirt
Interstate Route	State Route

MOUNT VERNON, WASH.

N4822.5—W12215/7.5

1956
PHOTOREVISED 1968 AND 1973
AMS 1580 IV NE—SERIES V891

USGS
HISTORICAL FILE
TOPOGRAPHIC DIVISION

QUADRANGLE LOCATION

WASHINGTON

MAR 0 1 1976