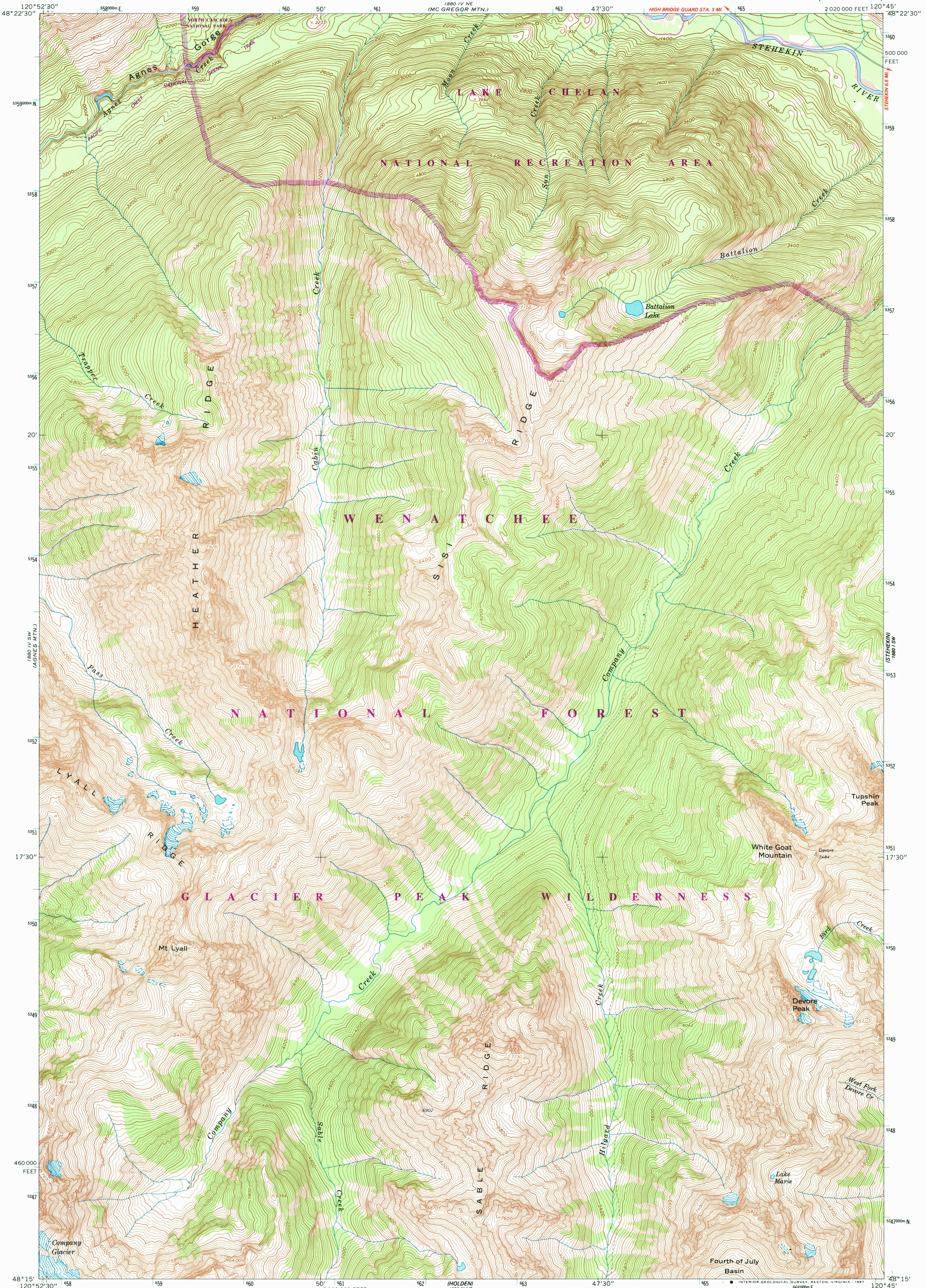


1880 IV NW  
(GOODE MTN.)

UNITED STATES  
DEPARTMENT OF THE INTERIOR  
GEOLOGICAL SURVEY

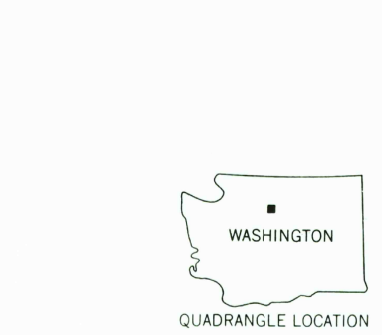
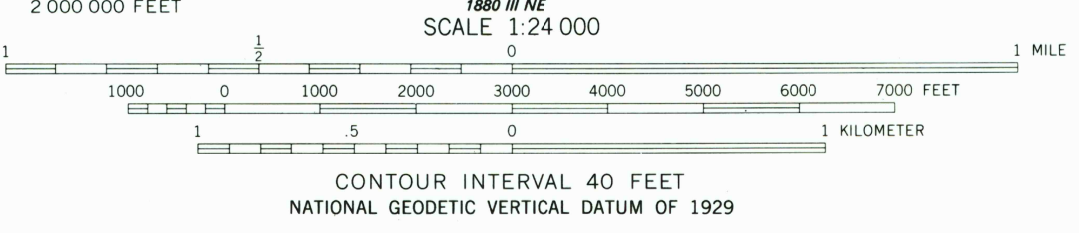
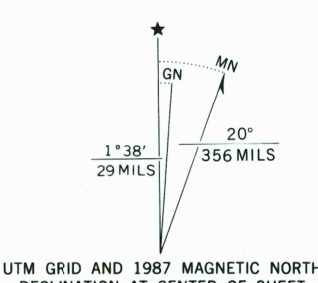
MT. LYALL QUADRANGLE  
WASHINGTON—CHELAN CO.  
7.5 MINUTE SERIES (TOPOGRAPHIC)

1880 I NW  
(MC ALISTER MTN.)



1880 IV SW  
(SUATTLE PASS)

Mapped, edited, and published by the Geological Survey  
Control by USGS and NOS/NOAA  
Topography by photogrammetric methods from aerial  
photographs taken 1958. Field checked 1963  
Polyconic projection. 1927 North American Datum  
10,000-foot grid based on Washington coordinate system,  
north zone  
1000-meter Universal Transverse Mercator grid ticks,  
zone 10, shown in blue  
Land lines have not been established in this area  
To place on the predicted North American Datum 1983  
move the projection lines 21 meters north and  
89 meters east as shown by dashed corner ticks  
There may be private inholdings within the boundaries  
of the National or State reservations shown on this map



ROAD CLASSIFICATION  
Light duty

MT. LYALL, WASH.  
48120-C7-TF-024

1963  
PHOTOREVISED 1987  
DMA 1880 IV SE—SERIES V891

1880 I SW  
(PINNACLE MTN.)

USGS WND HISTORICAL MAP  
JAN 4 1987  
REC'D FILE COPY