

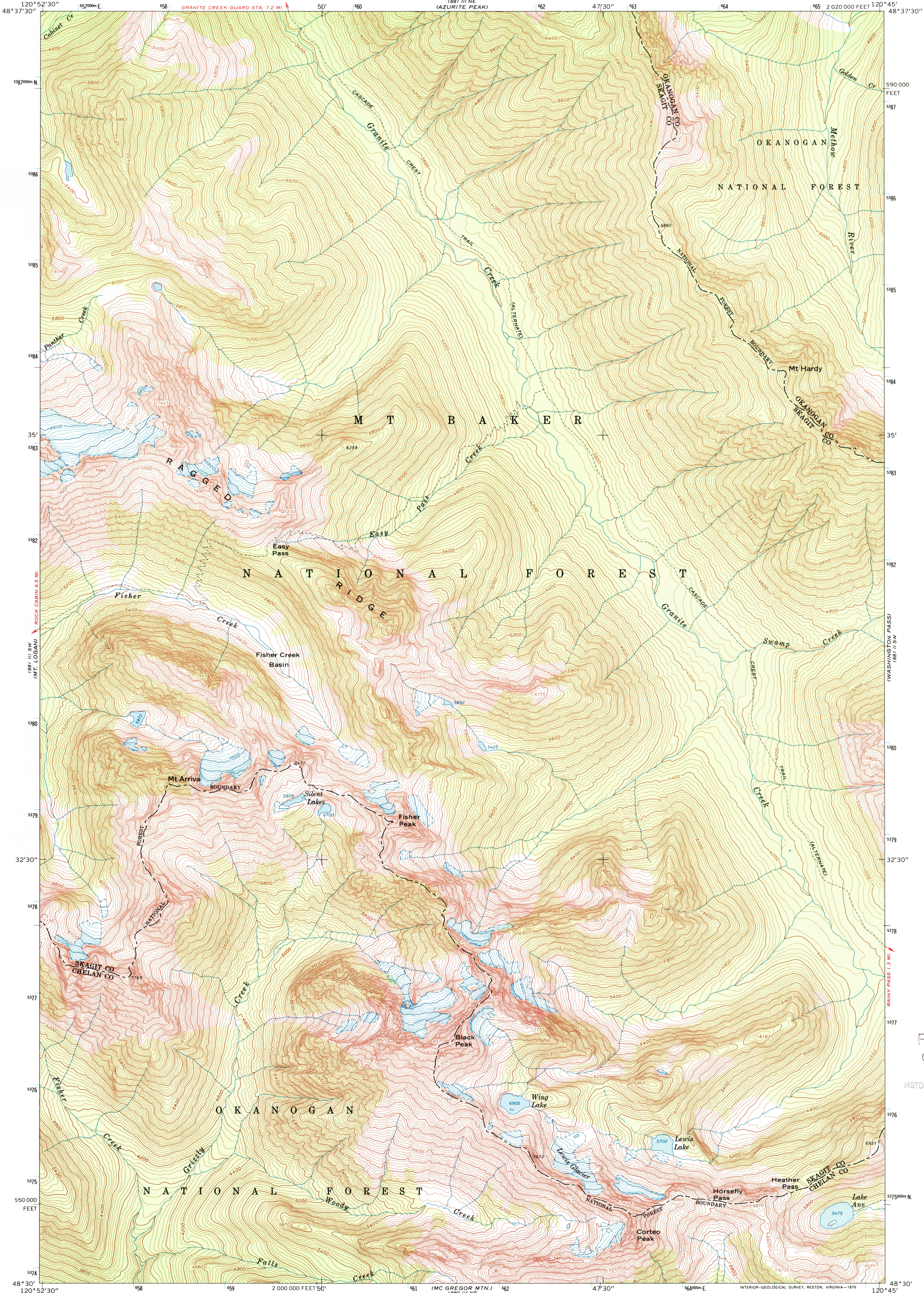
1881 III NW
(CRATER MTN.)



U.S. DEPARTMENT OF THE INTERIOR
U.S. GEOLOGICAL SURVEY

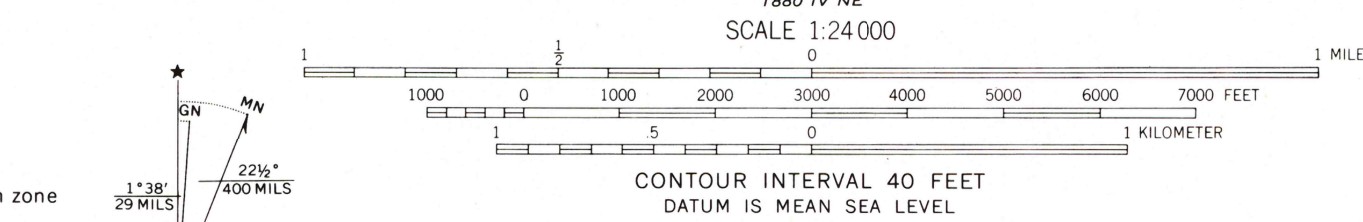
MT. ARRIVA QUADRANGLE
WASHINGTON
7.5 MINUTE SERIES (TOPOGRAPHIC)

1881 II NW
(SLYVE PEAK)



1800DE MTN.
1880 IV NW

Mapped, edited, and published by the Geological Survey
Control by USGS and USC&GS
Topography by photogrammetric methods from aerial
photographs taken 1958. Field checked 1963
Polyconic projection. 1927 North American datum
10,000-foot grid based on Washington coordinate system, north zone
1000-meter Universal Transverse Mercator grid ticks,
zone 10, shown in blue
Where omitted, land lines have not been established



THIS MAP COMPLIES WITH NATIONAL MAP ACCURACY STANDARDS
FOR SALE BY U.S. GEOLOGICAL SURVEY, P.O. BOX 25288, DENVER, COLORADO 80225
A FOLDER DESCRIBING TOPOGRAPHIC MAPS AND SYMBOLS IS AVAILABLE ON REQUEST



ROAD CLASSIFICATION
Trails

MT. ARRIVA, WASH.
N4830-W12045/7.5

1963

AMS 1881 III SE-SERIES V891

RECEIVED
OCT 3 1 2001
HISTORICAL MAP ARCHIVES

