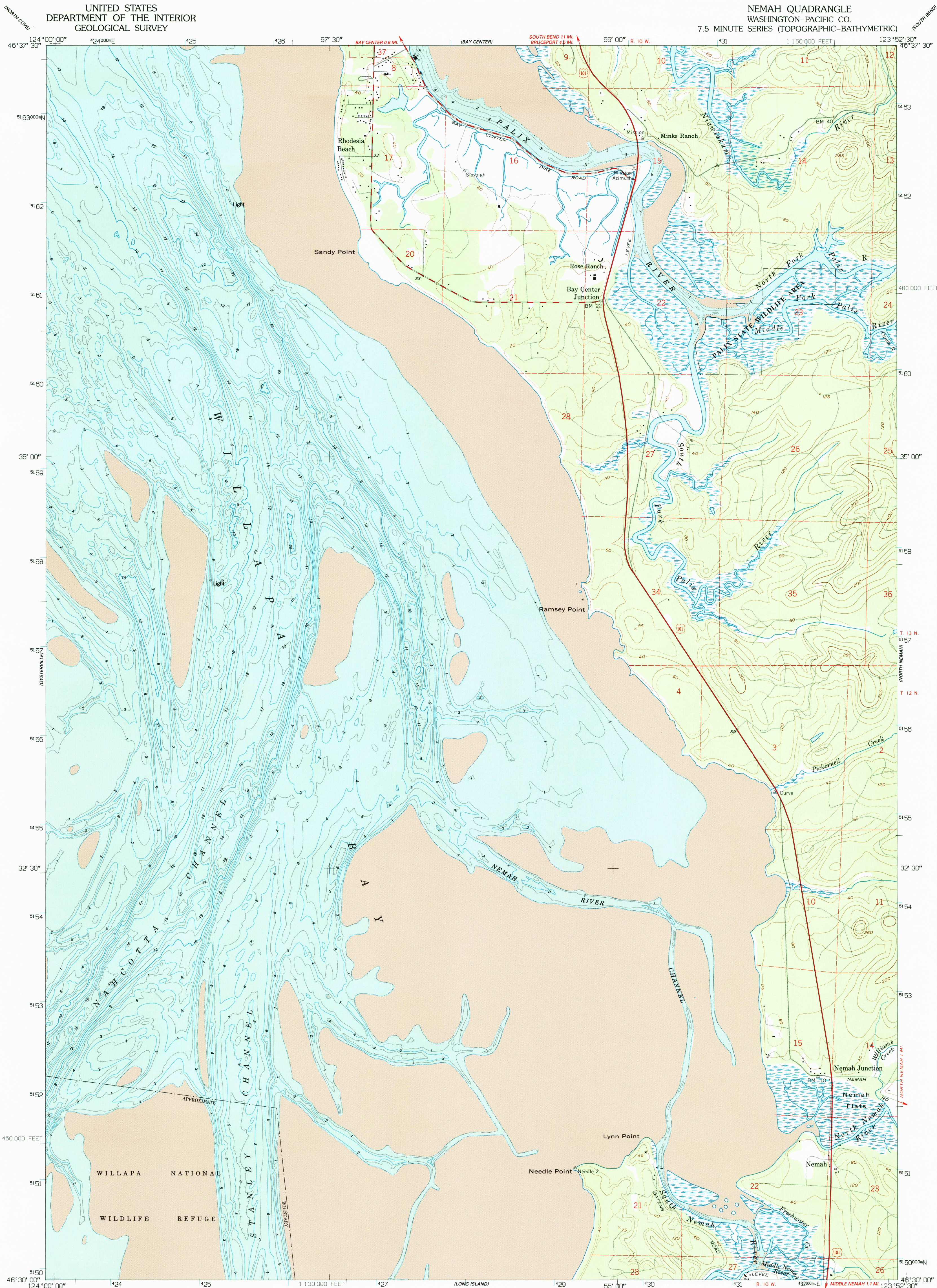


UNITED STATES
DEPARTMENT OF THE INTERIOR
GEOLOGICAL SURVEY

NEMAH QUADRANGLE
WASHINGTON-PACIFIC CO.
7.5 MINUTE SERIES (TOPOGRAPHIC-BATHYMETRIC)



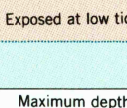
CONVERSION
SCALES



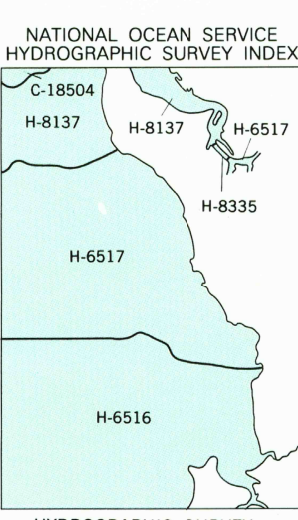
Feet	Meters
1	3.048
2	6.096
3	9.144
4	12.192
5	15.240
6	18.288
7	21.336
8	24.384
9	27.432
10	30.480

To convert feet to meters
multiply by 3.048
To convert meters to feet
multiply by 3.2808

DEPTH GRADIENT

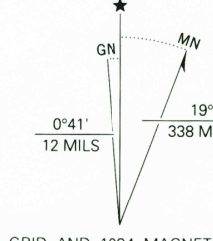


Produced by the United States Geological Survey
Control by USGS and NOS/NOAA
Compiled from aerial photographs taken 1950. Field checked 1957
Revised from aerial photographs taken 1990 and other sources
Map edited 1994. Contours and land elevations have not been
revised and may conflict with other content
Bathymetry compiled by the National Ocean Service from
tide-coordinated hydrographic surveys. This information is not
intended for navigational purposes.
Mean low water (dotted) line and mean high water (heavy solid) line
compiled by NOS from tide-coordinated aerial photography. Apparent
shoreline (outer edge of vegetation) shown by light solid line
North American Datum of 1927 (NAD 27). Projection and
blue 1000-meter Universal Transverse Mercator ticks, zone 10
10000-foot ticks - Washington Coordinate System, south zone
North American Datum of 1983 (NAD 83) is shown by dashed
corner ticks. The values of the shift between NAD 27 and NAD 83
for 7.5-minute intersections are obtainable from National Geodetic
Survey NADCON software
There may be private inholdings within the boundaries of the
National or State reservations shown on this map



SURVEY NUMBER	SURVEY DATE	SURVEY SCALE	SURVEY LINE SPACING (NAUT. MILES)
H-6516	1939	1:10,000	01-09
H-6517	1939	1:10,000	02-12
H-8137	1954	1:10,000	02-08
H-8335	1954	1:10,000	01-03

SCALE 1:24 000
1 1000 0 1000 2000 3000 4000 5000 6000 7000 FEET
1 KILOMETER
CONTOUR INTERVAL 40 FEET
DOTTED LINES REPRESENT 20 FOOT CONTOURS
NATIONAL GEODETIC VERTICAL DATUM OF 1929
BATHYMETRIC CONTOUR INTERVAL 2 METERS WITH SUPPLEMENTARY
1 METER CONTOURS - DATUM IS MEAN LOWER LOW WATER
THE RELATIONSHIP BETWEEN THE TWO DATUMS IS VARIABLE
THE MEAN RANGE OF TIDE IS APPROXIMATELY 2.4 METERS
THIS MAP COMPLIES WITH NATIONAL MAP ACCURACY STANDARDS
BATHYMETRIC SURVEY DATA COMPLIES WITH INTERNATIONAL HYDROGRAPHIC
ORGANIZATION (IHO) SPECIAL PUBLICATION 44 ACCURACY STANDARDS
AND/OR STANDARDS USED AT THE DATE OF THE SURVEY
FOR SALE BY U.S. GEOLOGICAL SURVEY
DENVER, COLORADO 80225, OR RESTON, VIRGINIA 22092
AND NATIONAL OCEAN SERVICE, ROCKVILLE, MARYLAND 20852
A FOLDER DESCRIBING TOPOGRAPHIC MAPS AND SYMBOLS IS AVAILABLE ON REQUEST



NEMAH, WA
46123-E8-TB-024
1957
REVISED 1994
DMA 1277 III SW-SERIES V891

