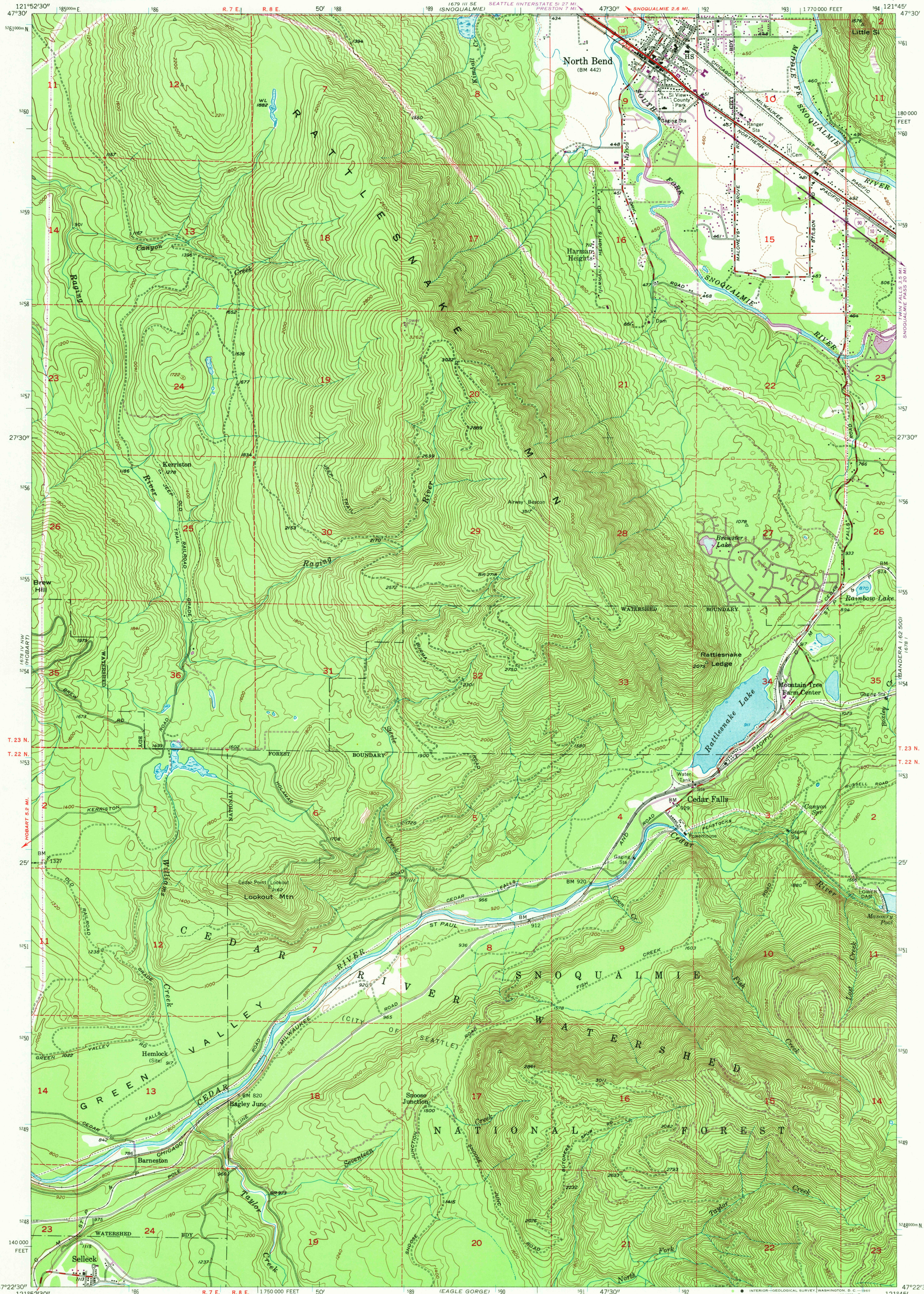


UNITED STATES  
DEPARTMENT OF THE INTERIOR  
GEOLOGICAL SURVEY

NORTH BEND QUADRANGLE  
WASHINGTON—KING CO.  
7.5 MINUTE SERIES (TOPOGRAPHIC)



Map made, edited, and published by the Geological Survey

Control by USGS and USC&GS

Topography from aerial photographs by multiplex methods  
Aerial photographs taken 1952. Field check 1953

Polyconic projection. 1927 North American datum  
10,000-foot grid based on Washington coordinate system, north zone

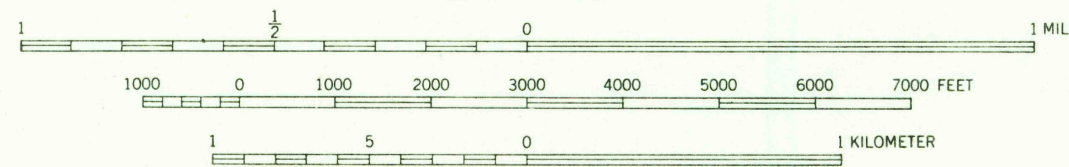
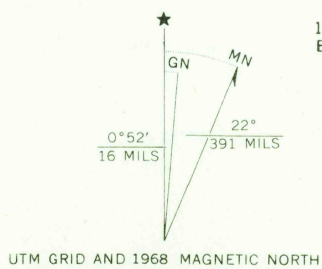
Travel within the Cedar River Watershed area is restricted

Dashed land lines indicate approximate locations

Unchecked elevations are shown in brown

1000-meter Universal Transverse Mercator grid ticks,  
zone 10, shown in blue

Revisions shown in purple compiled from aerial photographs  
taken 1968. This information not field checked



CONTOUR INTERVAL 40 FEET  
DASHED LINES REPRESENT 10 FOOT CONTOURS  
5 FOOT CONTOURS SHOWN ON SURFACE OF MIDDLE FORK SNOQUALMIE RIVER  
DATUM IS MEAN SEA LEVEL  
FOR SALE BY U.S. GEOLOGICAL SURVEY, DENVER, COLORADO 80225, OR WASHINGTON, D.C. 20242  
A FOLDER DESCRIBING TOPOGRAPHIC MAPS AND SYMBOLS IS AVAILABLE ON REQUEST



ROAD CLASSIFICATION  
Heavy-duty ——— Light-duty ———  
Medium-duty ——— Unimproved dirt ———  
U.S. Route Interstate Route

USGS  
Historical File  
Topographic Division

NORTH BEND, WASH.  
N4722.5—W12145/7.5

1953  
PHOTOGRAPHED 1968  
AMS 1678 IV NE—SERIES V891

U.S.G.S.  
FILE COPY  
TOPOGRAPHIC DIVISION

3405  
NOV 7 1969