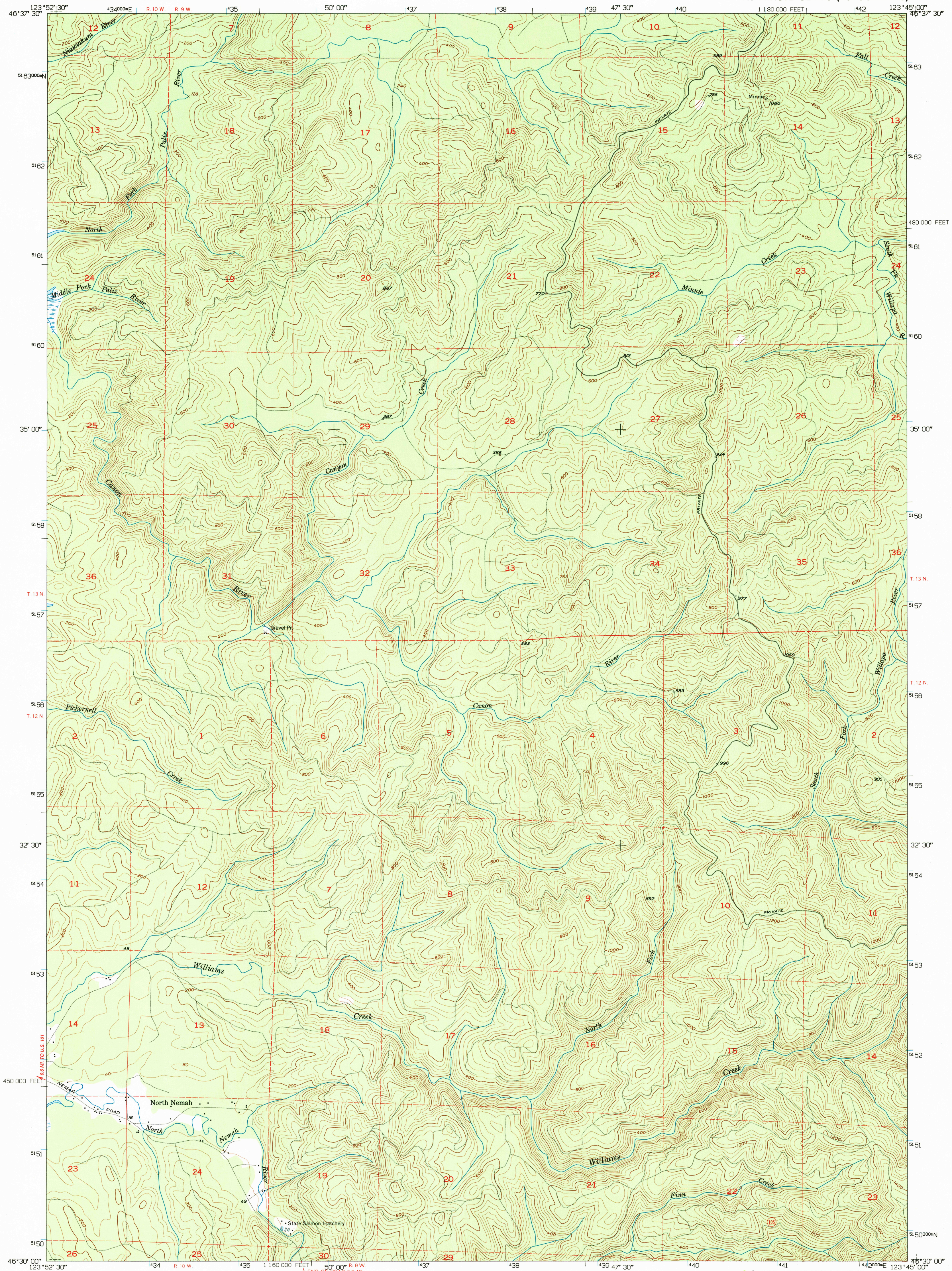
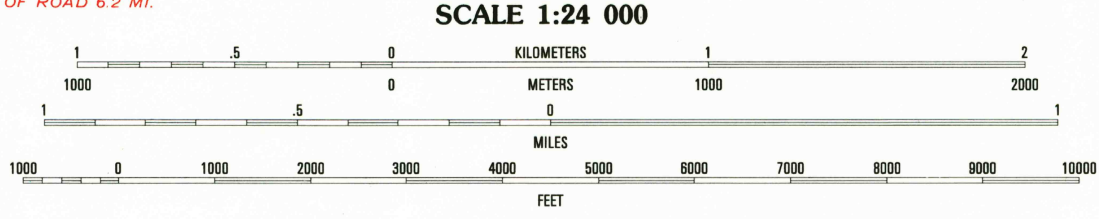
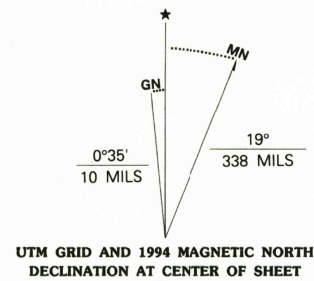


UNITED STATES
DEPARTMENT OF THE INTERIOR
GEOLOGICAL SURVEY

NORTH NEMAH QUADRANGLE
WASHINGTON-PACIFIC CO.
7.5 MINUTE SERIES (TOPOGRAPHIC)



Produced by the United States Geological Survey
Control by USGS and NOS/NOAA
Compiled from aerial photographs taken 1953. Field checked 1955
Revised from aerial photographs taken 1990 and other sources
Map edited 1994. Contours and land elevations have not been
revised and may conflict with other content
North American Datum of 1983 (NAD 83). Projection and
blue 1000-meter ticks: Universal Transverse Mercator, zone 10
10 000-foot ticks: Washington Transverse Mercator, south zone
North American Datum of 1983 (NAD 83) is shown by dashed
corner ticks. The values of the shift between NAD 27 and
NAD 83 for 7.5-minute intersections are obtainable from
National Geodetic Survey NADCON Software



CONTOUR INTERVAL 40 FEET
NATIONAL GEODETIC VERTICAL DATUM OF 1929
TO CONVERT FEET TO METERS MULTIPLY BY 0.3048
TO CONVERT METERS TO FEET MULTIPLY BY 3.2808
Complies with National Cartographic Standards for Spatial Accuracy (Horizontal), Class 1
Not tested for compliance with National Cartographic Standards for Spatial Accuracy (Vertical)
FOR SALE BY U.S. GEOLOGICAL SURVEY
DENVER, COLORADO 80225, OR RESTON, VIRGINIA 22092
A FOLDER DESCRIBING TOPOGRAPHIC MAPS AND SYMBOLS IS AVAILABLE ON REQUEST

QUADRANGLE LOCATION

WASHINGTON

ROAD CLASSIFICATION

Primary highway
hard surface
Secondary highway
hard surface

Light-duty road, hard or
improved surface
Unimproved road

Interstate Route U.S. Route State Route

1	2	3
4	5	6
7	8	9

1 Bay Center
2 South Bend
3 Raymond
4 Nemah
5 Menlo
6 Lons Island
7 Omas Ranch
8 Upper Naselle River

NORTH NEMAH, WA
46123-E7-TF-024
1955
REVISED 1994
DMA 1277 III SE-SERIES V891

