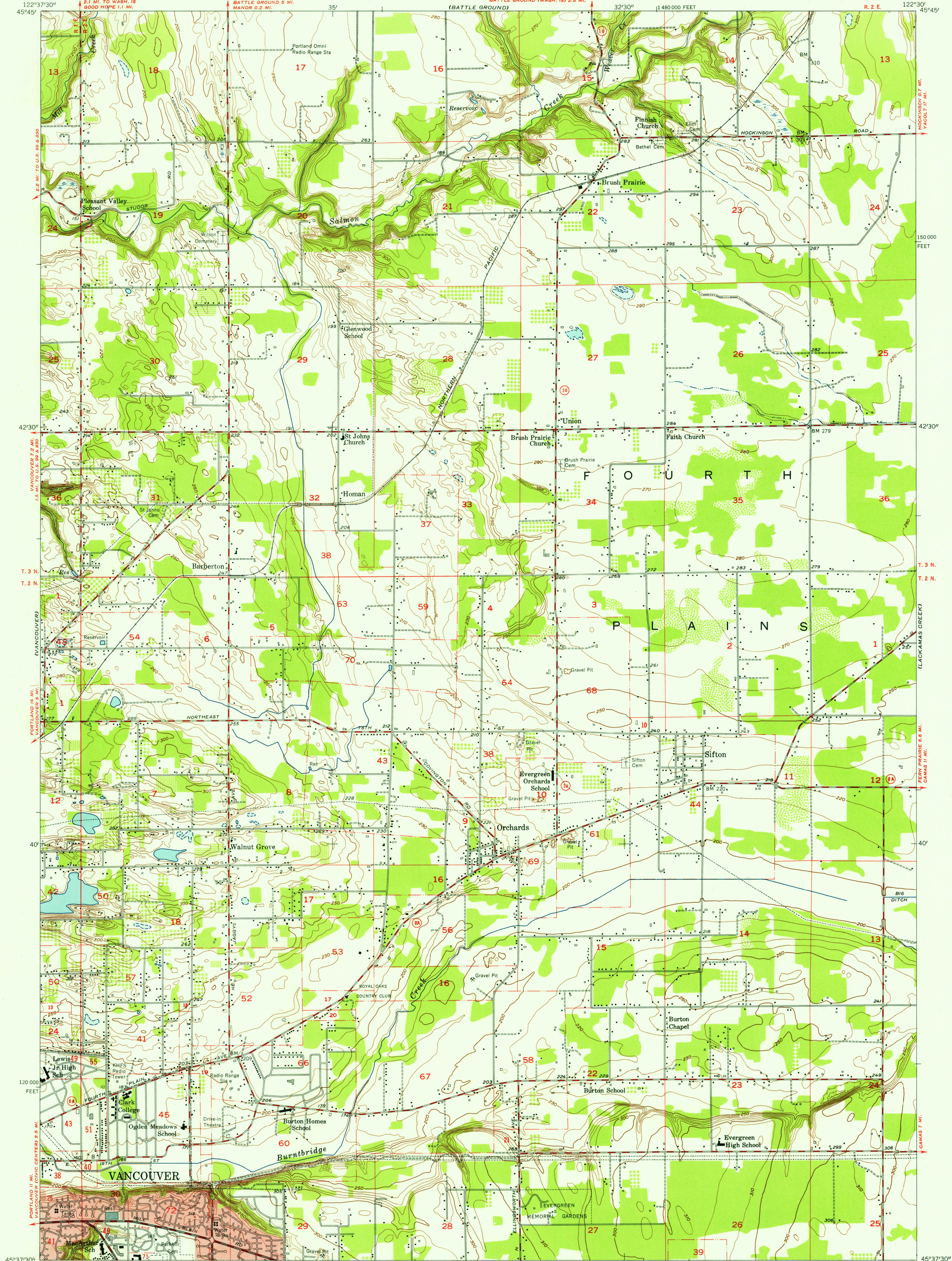
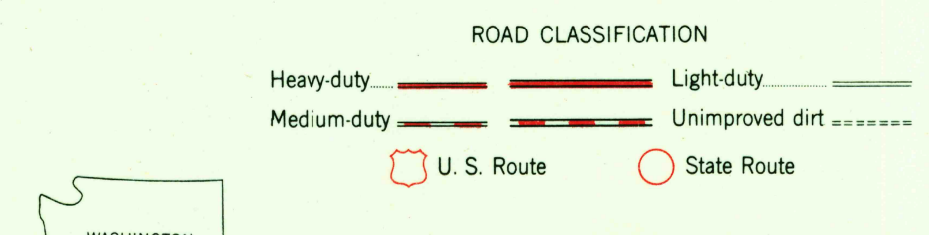
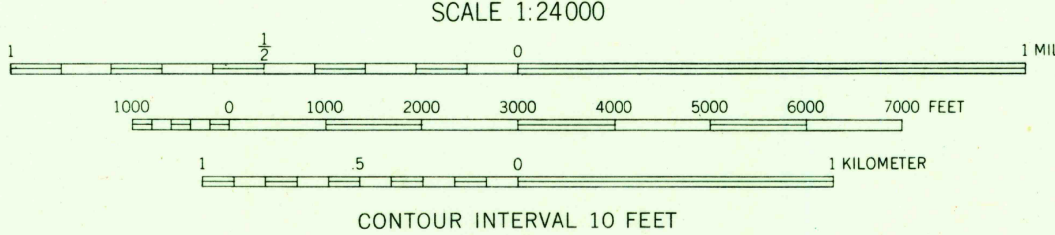
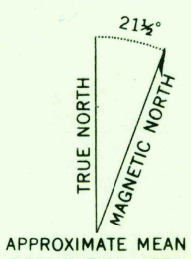


UNITED STATES
DEPARTMENT OF THE INTERIOR
GEOLOGICAL SURVEY

ORCHARDS QUADRANGLE
WASHINGTON—CLARK CO.
7.5 MINUTE SERIES (TOPOGRAPHIC)
NE/4 PORTLAND 15' QUADRANGLE



Mapped, edited, and published by the Geological Survey
Control by USGS, USC&GS and USCE
Topography from aerial photographs by Kelsh plotter and by
plane-table surveys 1954. Aerial photographs taken 1951
Polyconic projection. 1927 North American datum
10,000-foot grid based on Washington coordinate system, south zone
Red tint indicates areas in which only landmark buildings are shown



ORCHARDS, WASH.
NE/4 PORTLAND 15' QUADRANGLE
N4537.5—W12230.7/7.5
1954

THIS MAP COMPLIES WITH NATIONAL MAP ACCURACY STANDARDS
FOR SALE BY U. S. GEOLOGICAL SURVEY, FEDERAL CENTER, DENVER, COLORADO OR WASHINGTON 25, D. C.
A FOLDER DESCRIBING TOPOGRAPHIC MAPS AND SYMBOLS IS AVAILABLE ON REQUEST

U.S.G.S.
FILE COPY
TOPOGRAPHIC DIVISION

U.S.G.S.
FILE COPY
TOPOGRAPHIC DIVISION