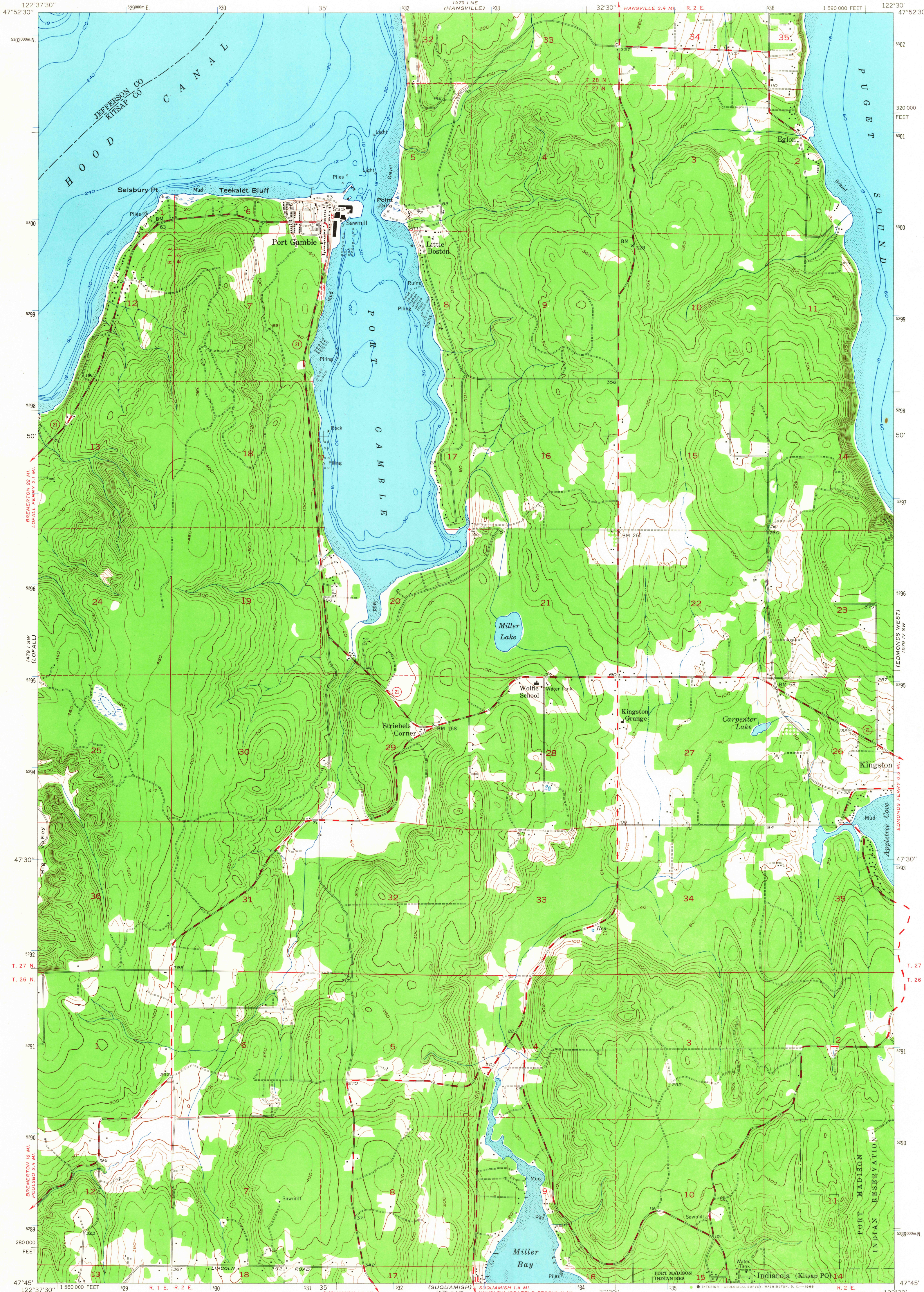


UNITED STATES
DEPARTMENT OF THE INTERIOR
GEOLOGICAL SURVEY

PORT GAMBLE QUADRANGLE
WASHINGTON
7.5 MINUTE SERIES (TOPOGRAPHIC)
SE/4 PORT GAMBLE 15' QUADRANGLE



Mapped, edited, and published by the Geological Survey

Control by USGS and USC&GS

Topography from aerial photographs by multiplex methods

Aerial photograph, taken 1951. Field check 1953

Hydrography compiled from USC&GS Charts 6421, 6445, and 6450

Polyconic projection. 1927 North American datum

10,000-foot grid based on Washington coordinate system,

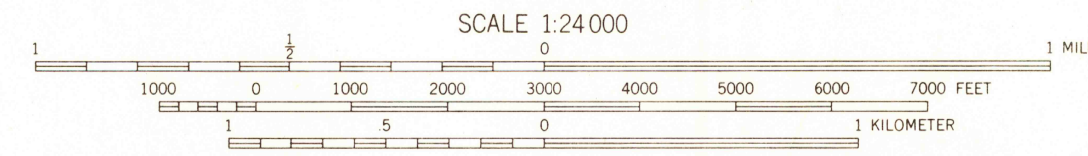
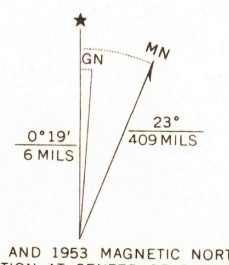
zone 10, shown in blue

Dashed land lines indicate approximate locations

Unchecked elevations are shown in brown

1000-meter Universal Transverse Mercator grid ticks,

zone 10, shown in blue



FOR SALE BY U. S. GEOLOGICAL SURVEY, DENVER, COLORADO 80225 OR WASHINGTON, D. C. 20242
A FOLDER DESCRIBING TOPOGRAPHIC MAPS AND SYMBOLS IS AVAILABLE ON REQUEST

ROAD CLASSIFICATION
Heavy-duty 4 LANE 16 LANE Light-duty
Medium-duty 4 LANE 16 LANE Unimproved dirt
U. S. Route State Route



PORT GAMBLE, WASH.
SE/4 PORT GAMBLE 15' QUADRANGLE
N 4745—W12250/7.5

1953

AMS 1479 I SE—SERIES V891

U.S.G.S.
FILE COPY
TOPOGRAPHIC DIVISION

SEP 4 1968