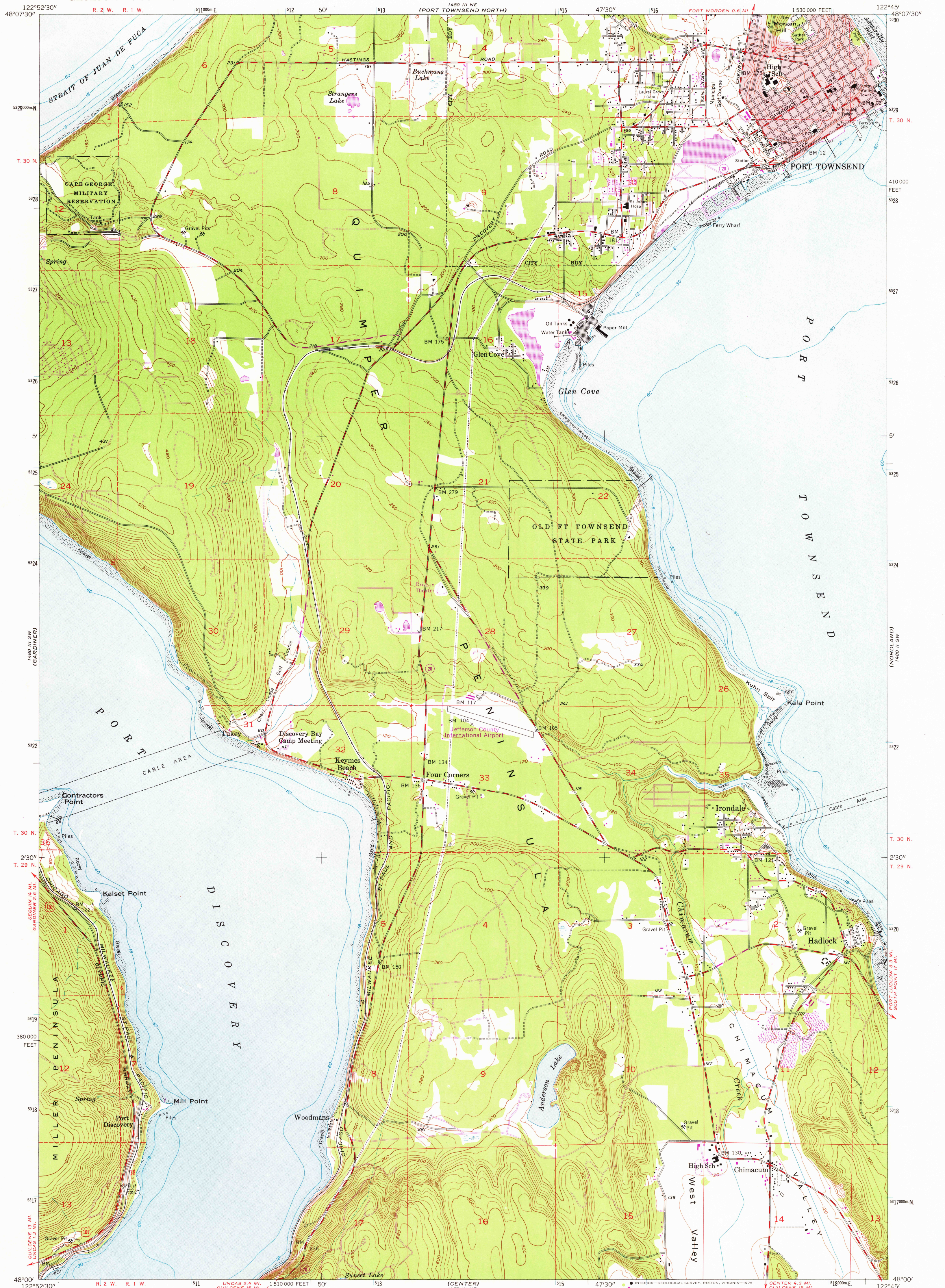
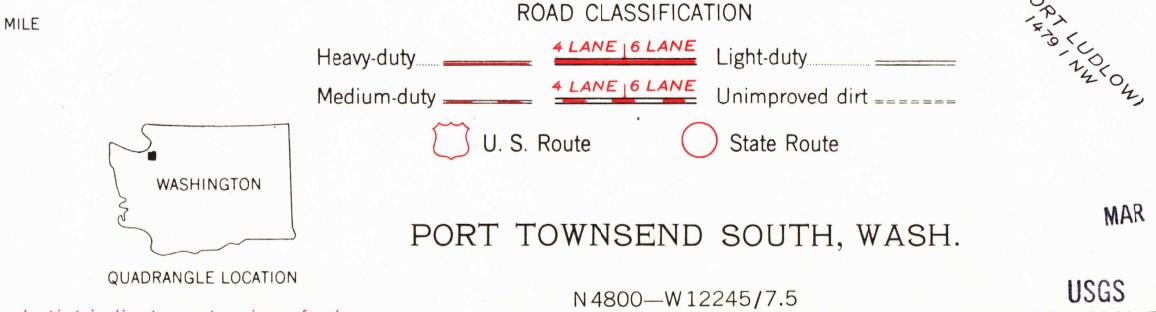
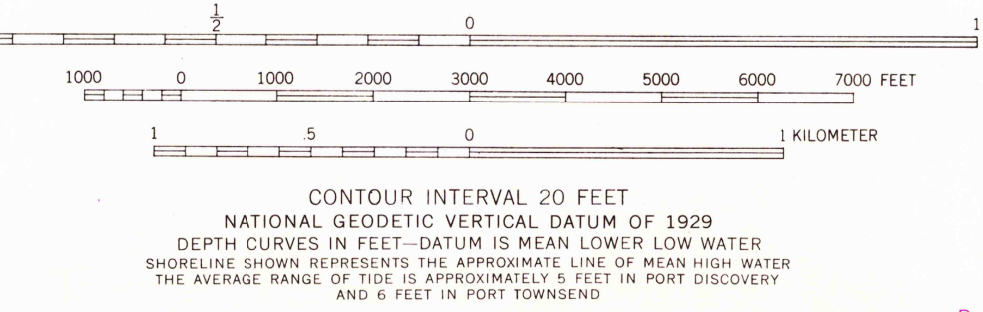
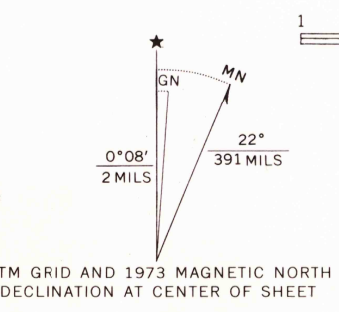


UNITED STATES
DEPARTMENT OF THE INTERIOR
GEOLOGICAL SURVEY

PORT TOWNSEND SOUTH QUADRANGLE
WASHINGTON—JEFFERSON CO.
7.5 MINUTE SERIES (TOPOGRAPHIC)



Mapped, edited, and published by the Geological Survey
Control by USGS, USC&GS, and USCE
Topography from aerial photographs by multiplex methods
Aerial photographs taken 1951. Field check 1953
Hydrography compiled from USC&GS Charts 6403, 6405
Polyconic projection. 1927 North American datum
10,000-foot grid based on Washington coordinate system, north zone
Red tint indicates areas in which only landmark buildings are shown
Dashed land lines indicate approximate locations
1000-meter Universal Transverse Mercator grid ticks,
zone 10, shown in blue
Revisions shown in purple compiled from aerial photographs
taken 1973. This information not field checked



PORT TOWNSEND SOUTH, WASH.

MAR 0 5 1976

USGS
HISTORICAL FILE
TOPOGRAPHIC DIVISION

FOR SALE BY U.S. GEOLOGICAL SURVEY, DENVER, COLORADO 80225, OR RESTON, VIRGINIA 22092
A FOLDER DESCRIBING TOPOGRAPHIC MAPS AND SYMBOLS IS AVAILABLE ON REQUEST