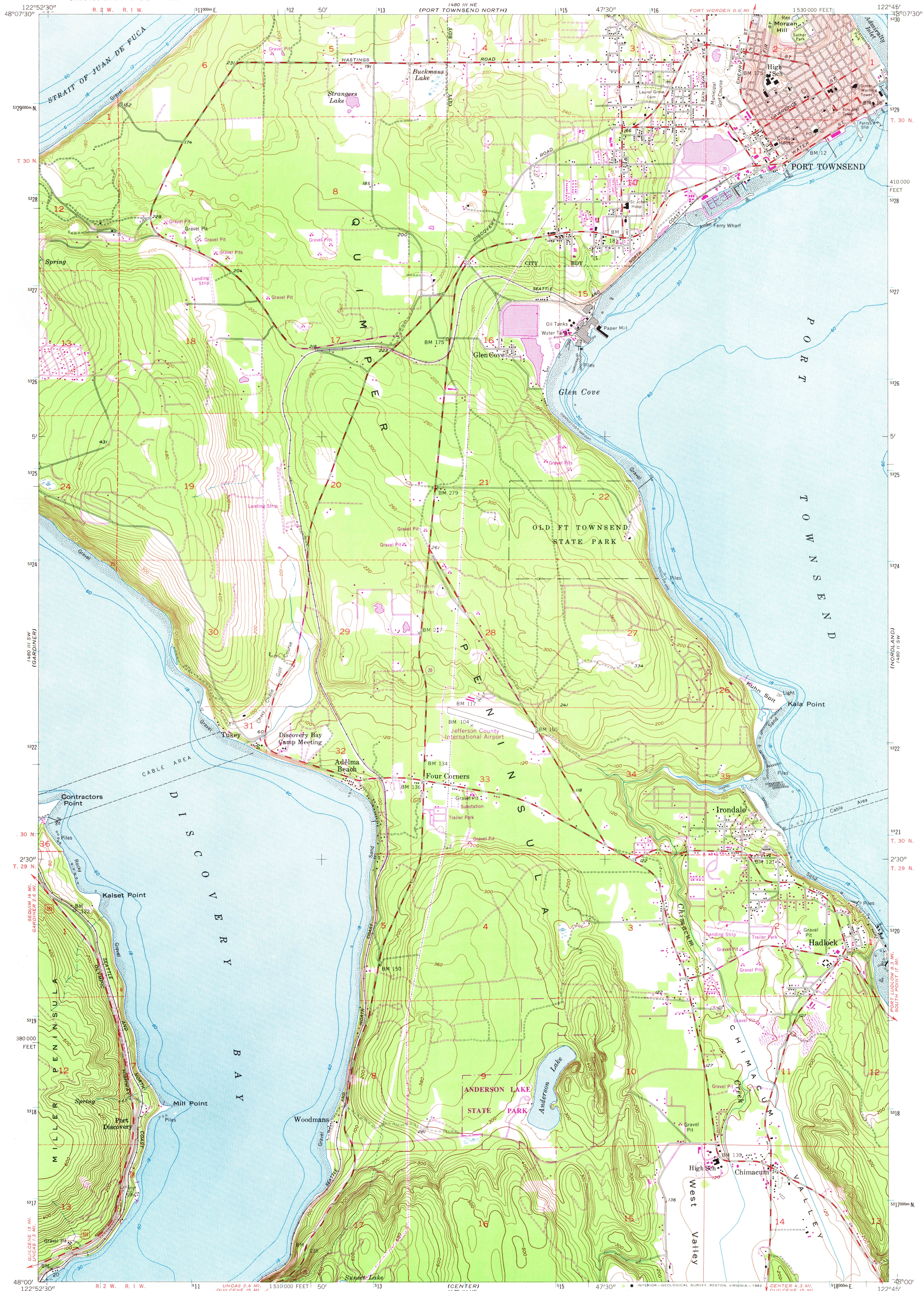


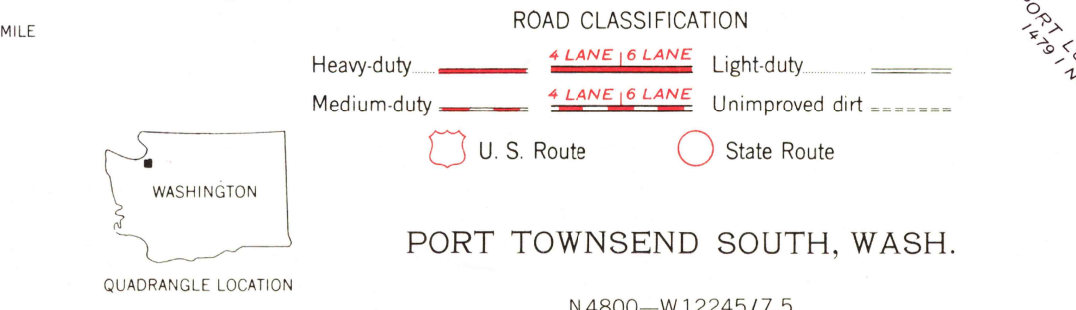
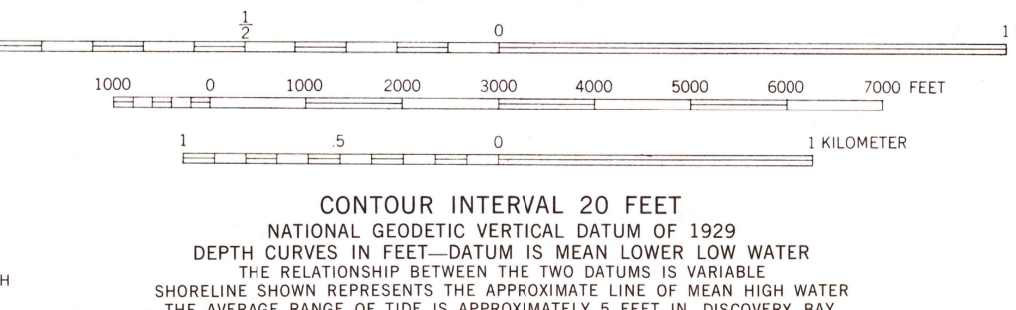
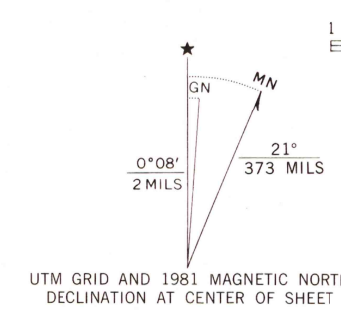
UNITED STATES
DEPARTMENT OF THE INTERIOR
GEOLOGICAL SURVEY

PORT TOWNSEND SOUTH QUADRANGLE
WASHINGTON—JEFFERSON CO.
7.5 MINUTE SERIES (TOPOGRAPHIC)



Mapped, edited, and published by the Geological Survey

Control by USGS and NOS/NOAA
Topography by photogrammetric methods from aerial photographs taken 1951. Field checked 1953.
Selected hydrographic data compiled from NOS charts 6403 and 6405. This information is not intended for navigational purposes.
Polyconic projection. 10,000-foot grid ticks based on Washington coordinate system, north zone. 1000-meter Universal Transverse Mercator grid ticks, zone 10, shown in blue. 1927 North American Datum. To place on the predicted North American Datum 1983 move the projection lines 23 meters north and 95 meters east as shown by dashed corner ticks.
Red tint indicates area in which only landmark buildings are shown.
There may be private inholdings within the boundaries of National or State reservations shown on this map.
Revisions shown in purple and woodland compiled from aerial photographs taken 1978 and other sources.
This information not field checked. Map edited 1981.
Purple tint indicates extension of urban areas.



FOR SALE BY U.S. GEOLOGICAL SURVEY, DENVER, COLORADO 80225, OR RESTON, VIRGINIA 22092
A FOLDER DESCRIBING TOPOGRAPHIC MAPS AND SYMBOLS IS AVAILABLE ON REQUEST

N4800—W12245/7.5
1953
PHOTOREVISED 1981
DMA 1480 III SE—SERIES V891

RETURN TO:
USGS AND HISTORICAL MAP ARCHIVES

JAN 20 1982

2775