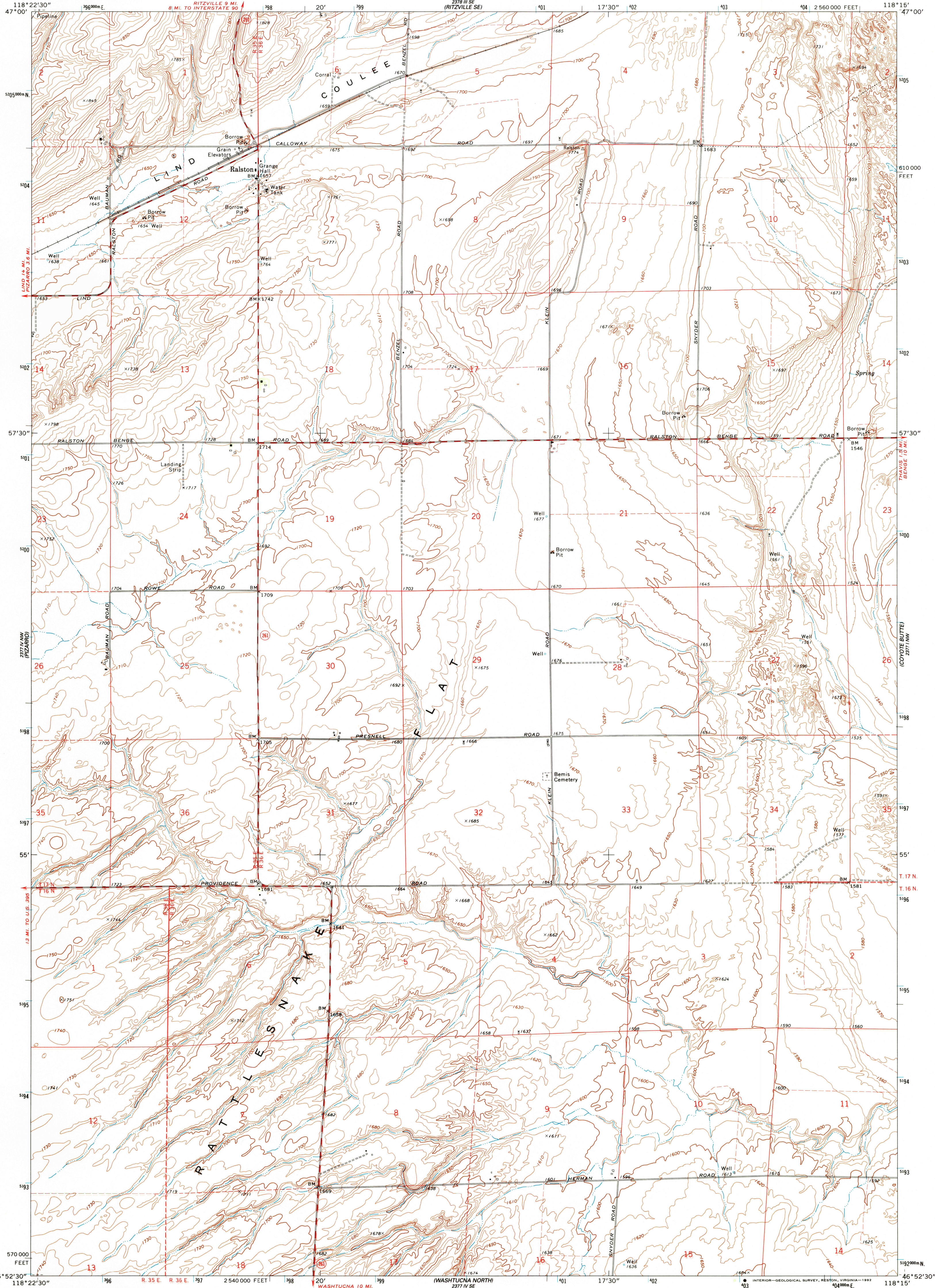


UNITED STATES  
DEPARTMENT OF THE INTERIOR  
GEOLOGICAL SURVEY

RALSTON QUADRANGLE  
WASHINGTON-ADAMS CO.  
7.5 MINUTE SERIES (TOPOGRAPHIC)



Mapped, edited, and published by the Geological Survey

Control by USGS and NOS/NOAA

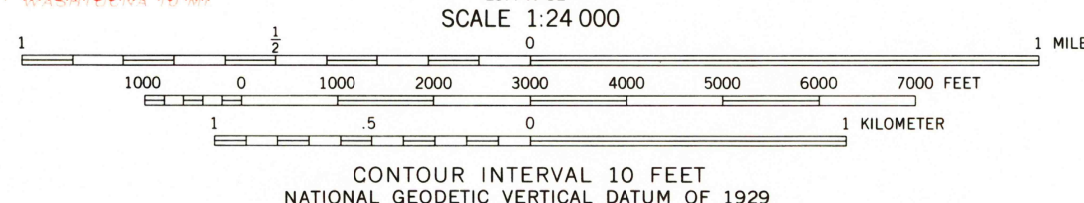
Topography by photogrammetric methods from aerial photographs taken 1971. Field checked 1972

Projection and 10,000-foot grid ticks: Washington coordinate system, south zone (Lambert conformal conic)

1000-meter Universal Transverse Mercator grid ticks, zone 11 shown in blue. 1927 North American Datum

The difference between 1927 North American Datum and North American Datum of 1983 (NAD 83) for 7.5 minute intersections is given in USGS Bulletin 1875. The NAD 83 is shown by dashed corner ticks

Fine red dashed lines indicate selected fence lines



ROAD CLASSIFICATION  
Primary highway, hard surface  
Secondary highway, hard surface  
Unimproved road  
Interstate Route  
U. S. Route  
State Route



RALSTON, WASH.  
46118-H3-TF-024

1972

DMA 2377 IV NE-SERIES V891

