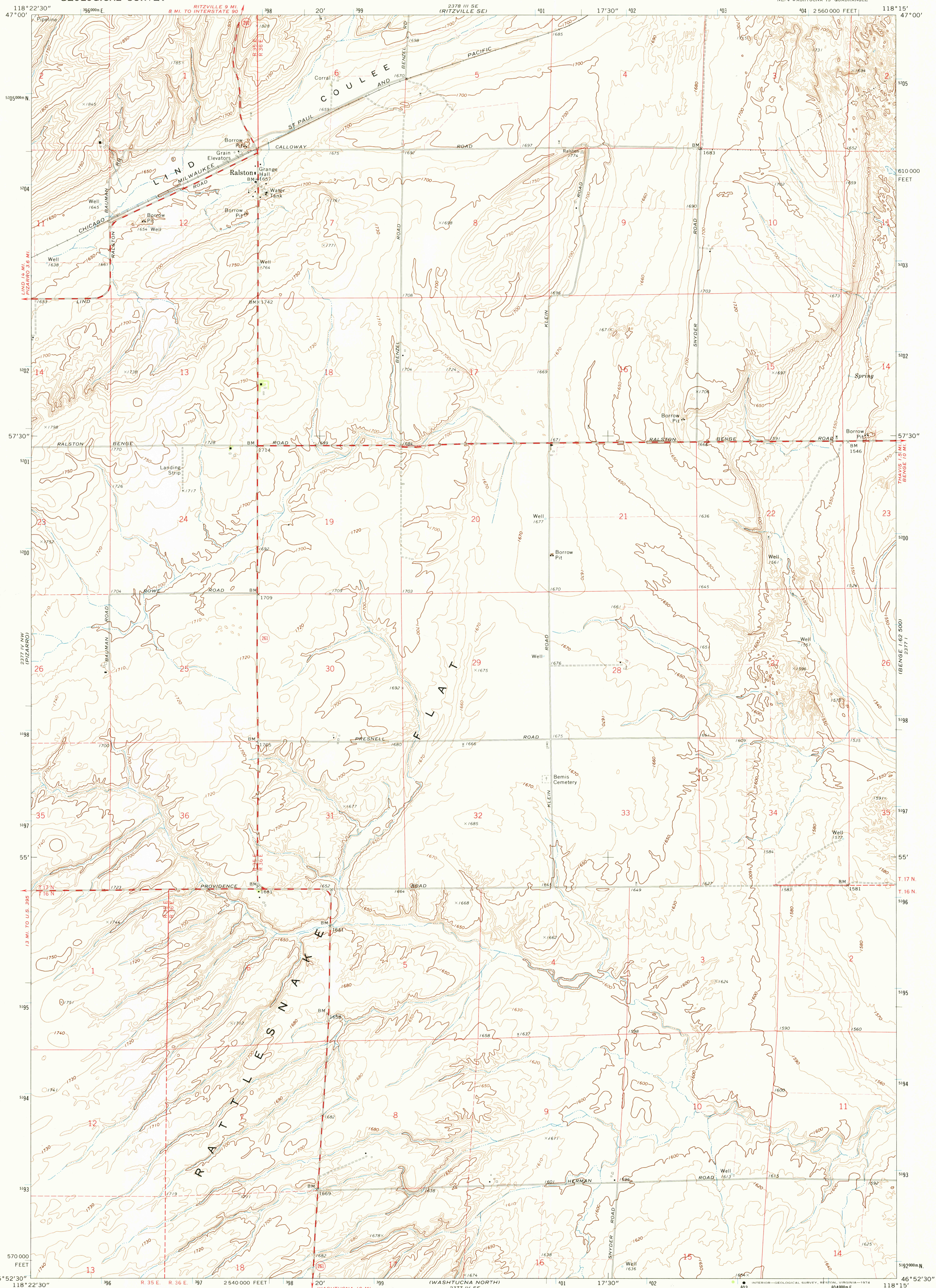


UNITED STATES
DEPARTMENT OF THE INTERIOR
GEOLOGICAL SURVEY

RALSTON QUADRANGLE
WASHINGTON—ADAMS CO.
7.5 MINUTE SERIES (TOPOGRAPHIC)



Mapped, edited, and published by the Geological Survey

Control by USGS and USC&GS

Topography by photogrammetric methods from aerial

photographs taken 1971. Field checked 1972

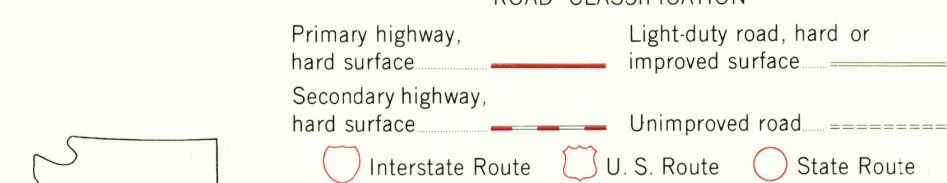
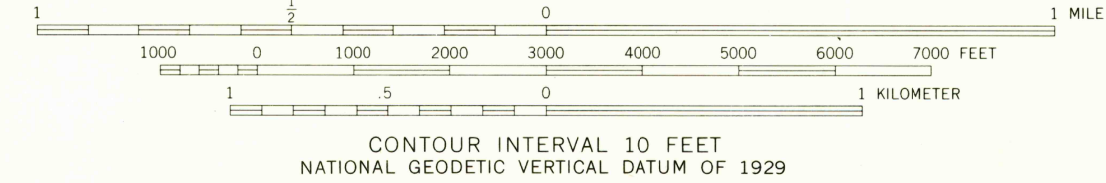
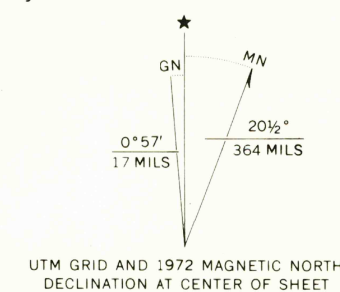
Projection and 10,000-foot grid ticks: Washington coordinate

system, south zone (Lambert conformal conic)

1000-meter Universal Transverse Mercator grid ticks,

zone 11, shown in blue. 1927 North American datum

Fine red dashed lines indicate selected fence lines



WASHINGTON
QUADRANGLE LOCATION

RALSTON, WASH.

NE 1/4 WASHTUCNA 15' QUADRANGLE
N4652.5-W11815/7.5

1972

AMS 2377 IV NE—SERIES V891

DEC 11 1974

THIS MAP COMPLIES WITH NATIONAL MAP ACCURACY STANDARDS
FOR SALE BY U.S. GEOLOGICAL SURVEY, DENVER, COLORADO 80225 OR RESTON, VIRGINIA 22092
A FOLDER DESCRIBING TOPOGRAPHIC MAPS AND SYMBOLS IS AVAILABLE ON REQUEST

U.S. Geological Survey
Historical File
Topographic Division

3500