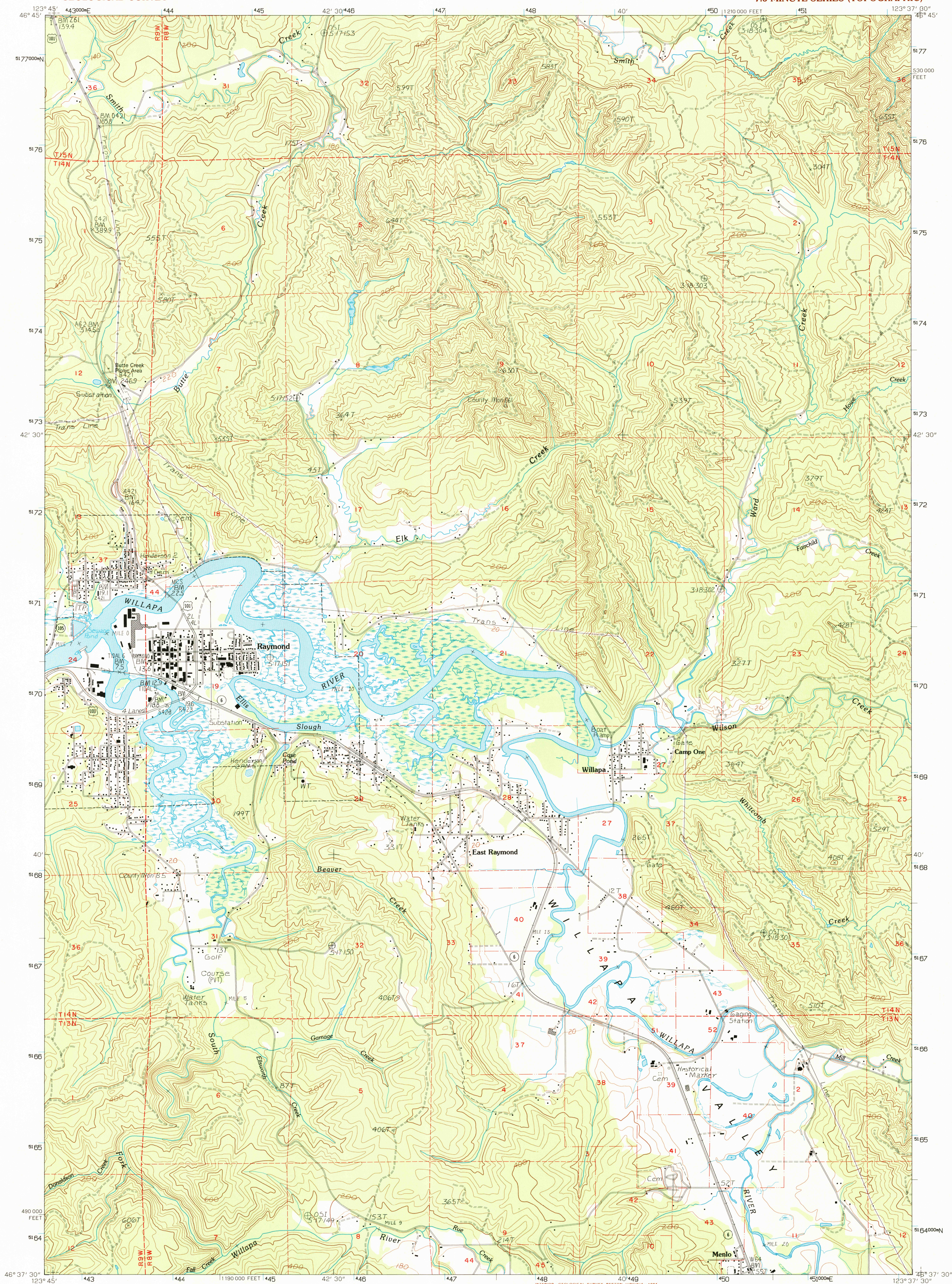


UNITED STATES
DEPARTMENT OF THE INTERIOR
GEOLOGICAL SURVEY

RAYMOND QUADRANGLE
WASHINGTON—PACIFIC CO.
7.5 MINUTE SERIES (TOPOGRAPHIC)



PRODUCED BY THE UNITED STATES GEOLOGICAL SURVEY
CONTROL BY USGS, NOS/NOAA
COMPILED FROM AERIAL PHOTOGRAPHS TAKEN 1981 AND 1983
FIELD CHECKED 1985. MAP EDITED 1986
PROJECTION LAMBERT CONFORMAL CONIC
BLUE 1000-METER UNIVERSAL TRANSVERSE MERCATOR TICS ZONE 10
10 000-FOOT STATE GRID TICS NORTH AMERICAN DATUM OF 1927 (NAD 27)
UTM GRID DECLINATION 19° EAST
1994 MAGNETIC NORTH DECLINATION 19° EAST
VERTICAL DATUM NATIONAL GEODETIC VERTICAL DATUM OF 1929
HORIZONTAL DATUM NORTH AMERICAN DATUM OF 1927 (NAD 27)
North American Datum of 1983 (NAD 83) is shown by dashed
corner ticks. The values of the shift between NAD 27 and NAD
83 for 7.5-minute intersections are obtainable from National
Geodetic Survey NADCON software
There may be private inholdings within the boundaries of any
Federal and State reservations shown on this map
No distinction made between houses, barns, and other buildings
Photoinsects from 1990 source; no major culture or drainage
changes observed. Boundaries and names verified 1994

PROVISIONAL MAP
Produced from original
manuscript drawings. Infor-
mation shown as of date of
photography.

SCALE 1:24 000
1 1000 0 1000 2000 3000 4000 5000 6000 7000 8000 9000 10 000
KILOMETERS
METERS
MILES
FOOT
CONTOUR INTERVAL 40 FEET
SUPPLEMENTARY CONTOUR INTERVAL 20 FEET
CONTROL ELEVATIONS SHOWN TO THE NEAREST 0.1 FOOT
OTHER ELEVATIONS SHOWN TO THE NEAREST FOOT
To convert meters to feet multiply by 3.2808
To convert feet to meters multiply by 0.3048
SHORELINE SHOWN REPRESENTS THE APPROXIMATE LINE OF MEAN HIGH WATER
THE MEAN RANGE OF TIDE IS APPROXIMATELY 8 FEET
THIS MAP COMPLIES WITH NATIONAL MAP ACCURACY STANDARDS
FOR SALE BY U. S. GEOLOGICAL SURVEY, DENVER, COLORADO 80225, OR RESTON, VIRGINIA 22092



1	2	3	1	Aberdeen SE
2	3	4	2	Elkhorn Creek
3	4	5	3	Brooklyn
4	5	6	4	South Bend
5	6	7	5	East of Raymond
6	7	8	6	North Nemah
7	8	9	7	Menlo
8	9	10	8	Leban

ROAD LEGEND
Improved Road
Unimproved Road
Trail
Interstate Route
U.S. Route
State Route

RAYMOND, WASH.
PROVISIONAL EDITION 1986

46123-F6-TF-024
MINOR REVISION 1994

