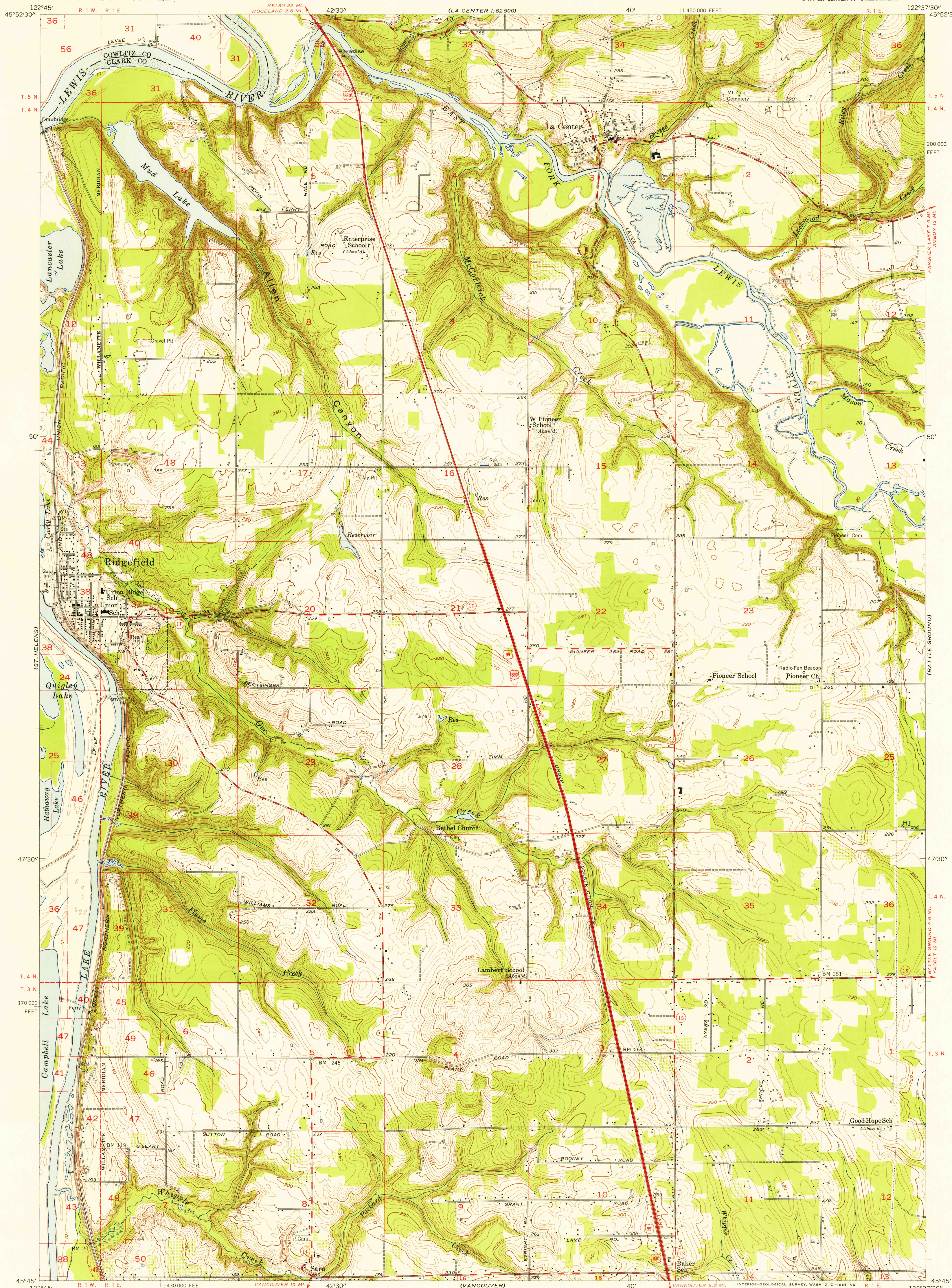
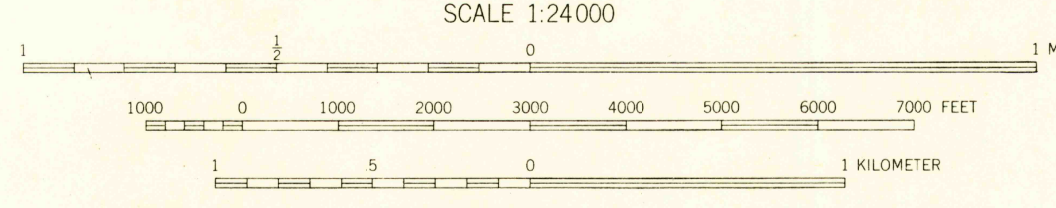


UNITED STATES  
DEPARTMENT OF THE INTERIOR  
GEOLOGICAL SURVEY

RIDGEFIELD QUADRANGLE  
WASHINGTON  
7.5 MINUTE SERIES (TOPOGRAPHIC)  
SW 1/4 LA CENTER 15' QUADRANGLE



Maped, edited, and published by the Geological Survey  
Control by USGS, USC&GS, and USCE  
Topography from aerial photographs by Kelsh plotter  
Aerial photographs taken 1951. Field check 1954  
Hydrography compiled from USC&GS chart 6153 (1952)  
Polyconic projection. 1927 North American datum  
10,000-foot grid based on Washington coordinate system, south zone  
Dashed land lines indicate approximate locations



ROAD CLASSIFICATION  
Heavy duty ——— Light duty ———  
Medium duty ——— Unimproved dirt ———  
U. S. Route ——— State Route ———



RIDGEFIELD, WASH.  
SW 1/4 LA CENTER 15' QUADRANGLE  
N 4545-W 12237.5/7.5

1954

THIS MAP COMPLIES WITH NATIONAL MAP ACCURACY STANDARDS  
FOR SALE BY U. S. GEOLOGICAL SURVEY, FEDERAL CENTER, DENVER, COLORADO OR WASHINGTON 25, D. C.  
A FOLDER DESCRIBING TOPOGRAPHIC MAPS AND SYMBOLS IS AVAILABLE ON REQUEST

JUL 16 1956