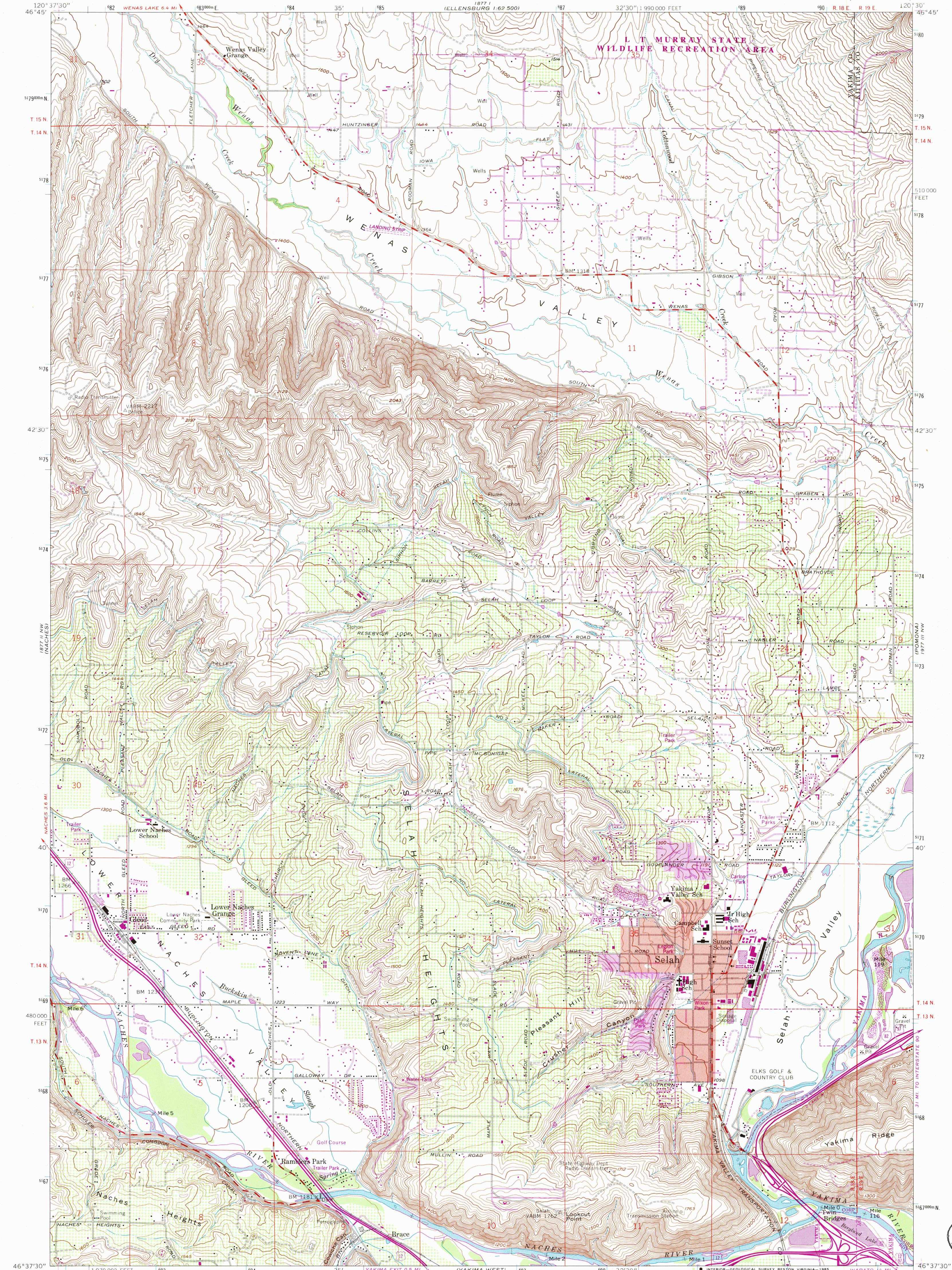


1871 II NW
1871 II SW

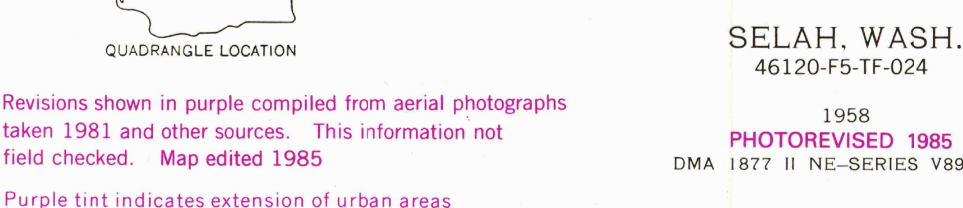
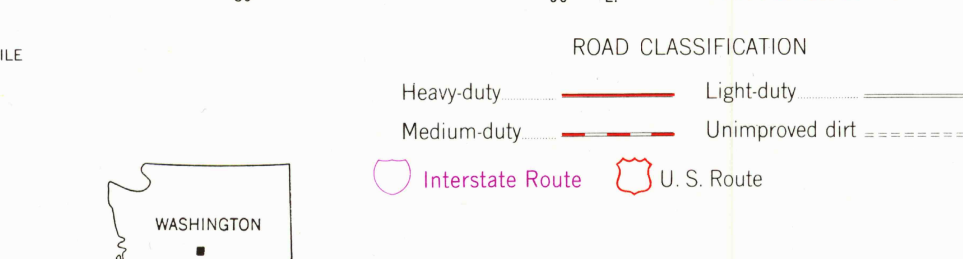
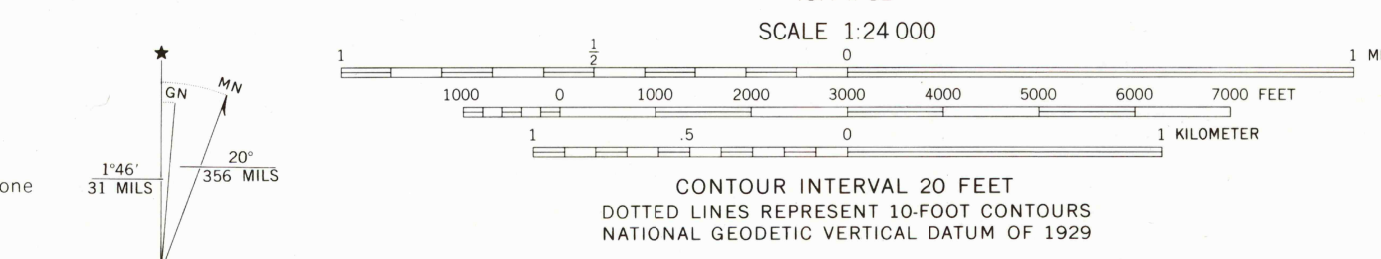
UNITED STATES
DEPARTMENT OF THE INTERIOR
GEOLOGICAL SURVEY

SELAH QUADRANGLE
WASHINGTON
7.5 MINUTE SERIES (TOPOGRAPHIC)

1871 IV NW
1871 IV SW



Maped, edited, and published by the Geological Survey
Control by USGS and NOS/NOAA
Topography from aerial photographs by photogrammetric methods
Aerial photographs taken 1956. Field check 1958
Polyconic projection. 1927 North American datum
10,000-foot grid based on Washington coordinate system, south zone
1000-meter Universal Transverse Mercator grid ticks,
zone 10, shown in blue
Red tint indicates area in which only
landmark buildings are shown
To place on the predicted North American Datum 1983,
move the projection lines 20 meters north and
89 meters east as shown by dashed corner ticks
There may be private inholdings within the boundaries of
the National or State reservations shown on this map



USGS NMD RESEARCH
NOV 25 1985
REFERENCE COLLECTION

THIS MAP COMPLIES WITH NATIONAL MAP ACCURACY STANDARDS
FOR SALE BY U.S. GEOLOGICAL SURVEY, DENVER, CO 80225, OR RESTON, VIRGINIA 22092
A FOLDER DESCRIBING TOPOGRAPHIC MAPS AND SYMBOLS IS AVAILABLE ON REQUEST

Revisions shown in purple compiled from aerial photographs
taken 1981 and other sources. This information not
field checked. Map edited 1985
Purple tint indicates extension of urban areas

SELAH, WASH.
46120-F5-TF-024
1958
PHOTOREVISED 1985
DMA 1877 II NE-SERIES V891