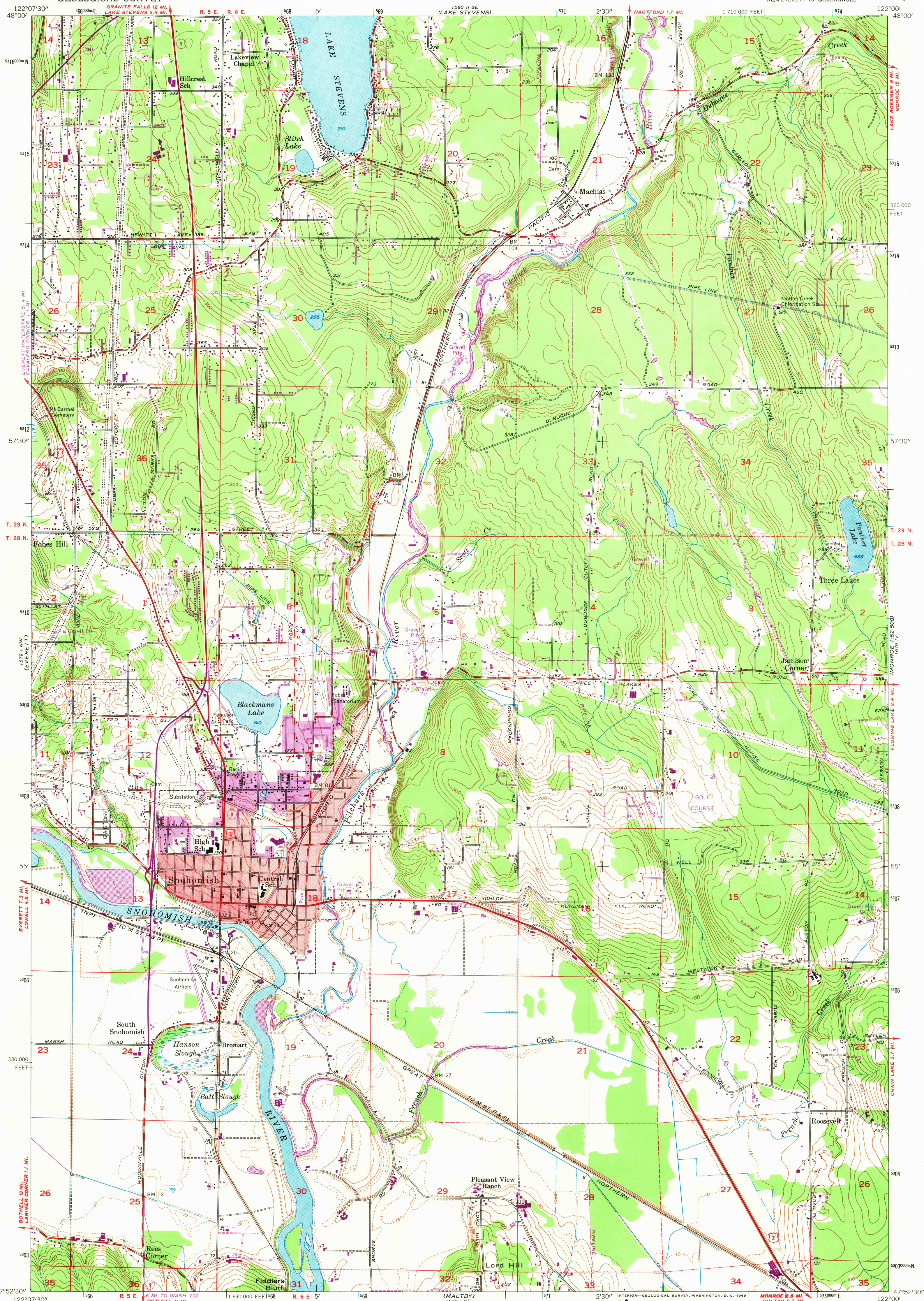


UNITED STATES
DEPARTMENT OF THE INTERIOR
GEOLOGICAL SURVEY

SNOHOMISH QUADRANGLE
WASHINGTON—SNOHOMISH CO.
7.5 MINUTE SERIES (TOPOGRAPHIC)
NE 1/4 EVERETT 15' QUADRANGLE



Mapped, edited, and published by the Geological Survey

Control by USGS and USC&GS

Topography from aerial photographs by multiplex methods
and by plane-table surveys 1953. Aerial photographs taken 1952

Polyconic projection. North American datum
10,000-foot grid based on Washington coordinate system, north zone

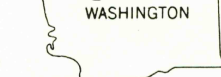
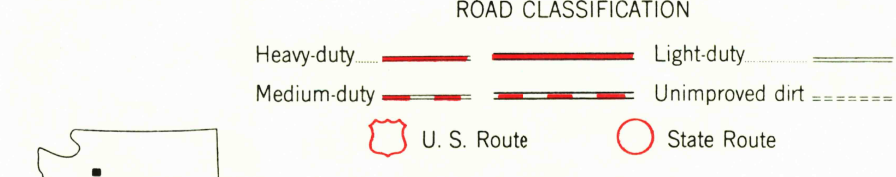
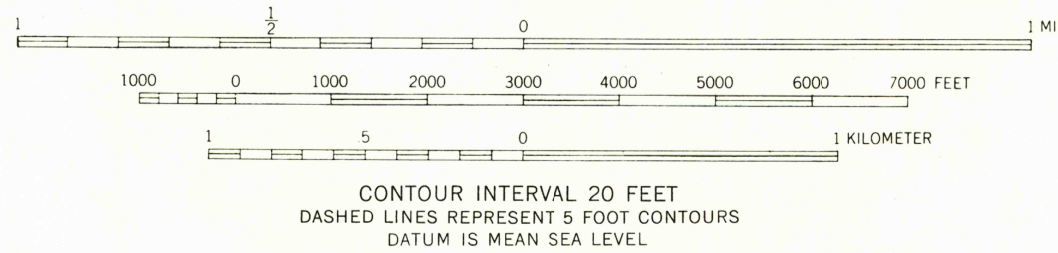
Dashed land lines indicate approximate locations

Unchecked elevations are shown in brown

1000-meter Universal Transverse Mercator grid ticks,
zone 10, shown in blue

Revisions shown in purple compiled from aerial photographs
taken 1968. This information not field checked

Purple tint indicates extension of urban areas



QUADRANGLE LOCATION

SNOHOMISH, WASH.
NE 1/4 EVERETT 15' QUADRANGLE
N 4752.5—W 12200/7.5

1953
PHOTOREVISED 1968
AMS 1579 1 NE—SERIES V891

OCT 3 1963