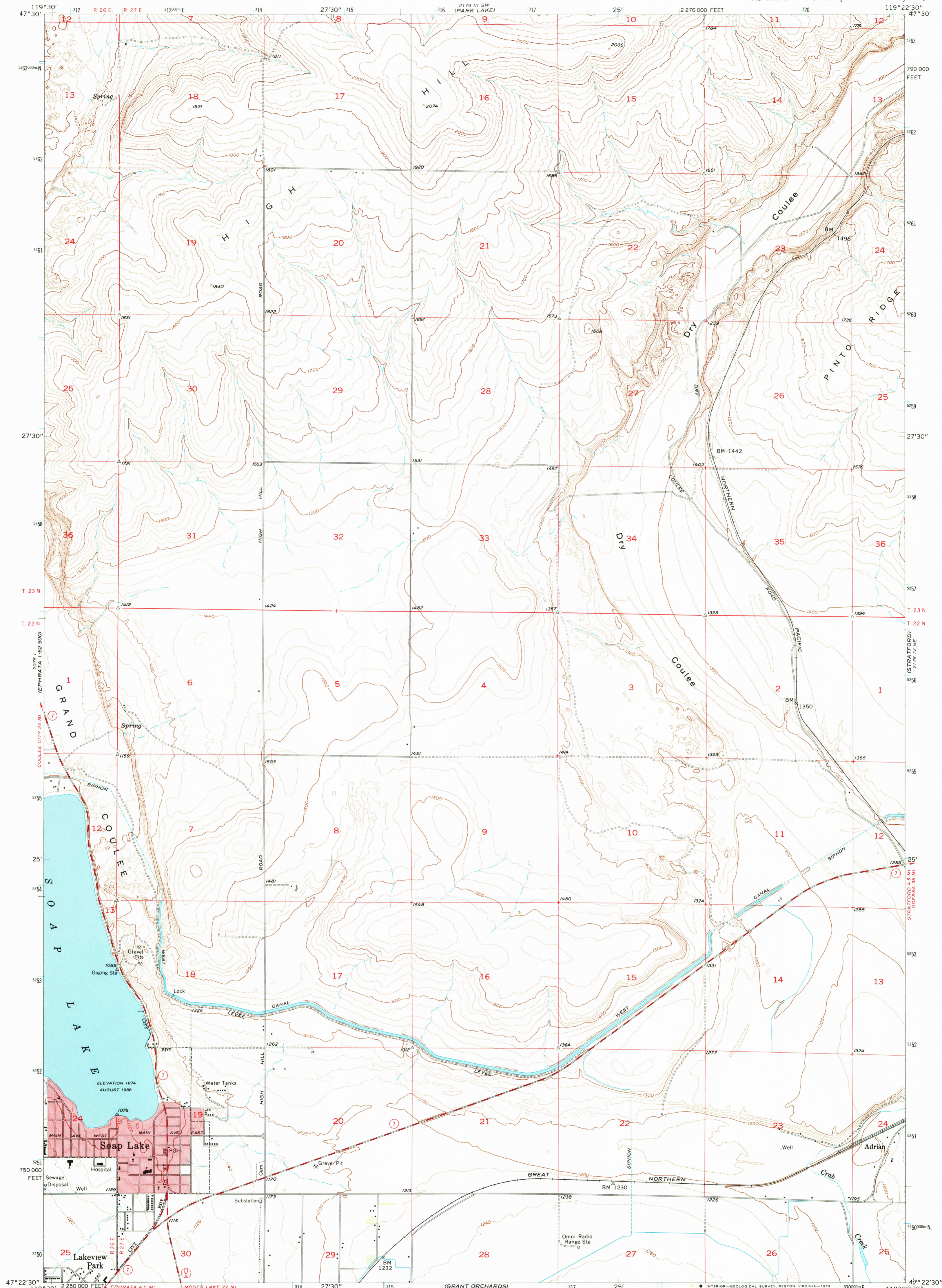


UNITED STATES
DEPARTMENT OF THE INTERIOR
GEOLOGICAL SURVEY



SOAP LAKE QUADRANGLE
WASHINGTON—GRANT CO.
7.5 MINUTE SERIES (TOPOGRAPHIC)



Mapped, edited, and published by the Geological Survey

Control by USGS, USC&GS, and USBR

Topography from planetable surveys by USBR 1937

and from aerial photographs by Kelsh plotter

Aerial photographs taken 1954. Field check 1956

Polyconic projection. 1927 North American datum

10,000-foot grid based on Washington coordinate system,

south zone

1000-meter Universal Transverse Mercator grid ticks,

zone 11, shown in blue

To place on the predicted North American Datum 1983,

move the projection lines 19 meters north and

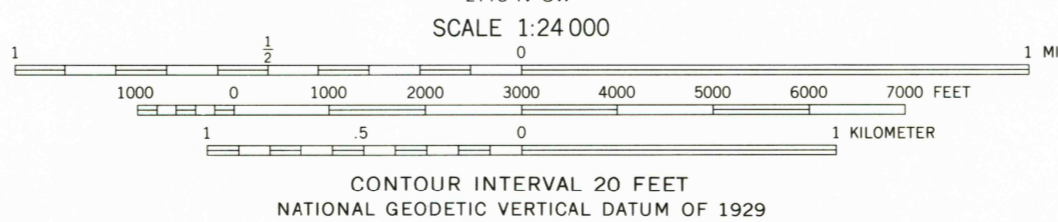
86 meters east as shown by dashed corner ticks

Red tint indicates areas in which only

landmark buildings are shown

Map photoinspected 1976

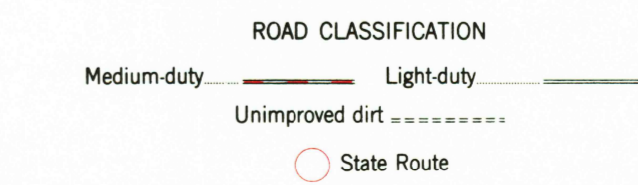
No major culture or drainage changes observed



CONTOUR INTERVAL 20 FEET
NATIONAL GEODETIC VERTICAL DATUM OF 1929



QUADRANGLE LOCATION



USGS
Historical File
Topographic Division

SOAP LAKE, WASH.
N4722.5—W11922.5/7.5

1956
PHOTOINSPECTED 1976
DMA 2178 IV NW—SERIES V891

JUN - 6 1980