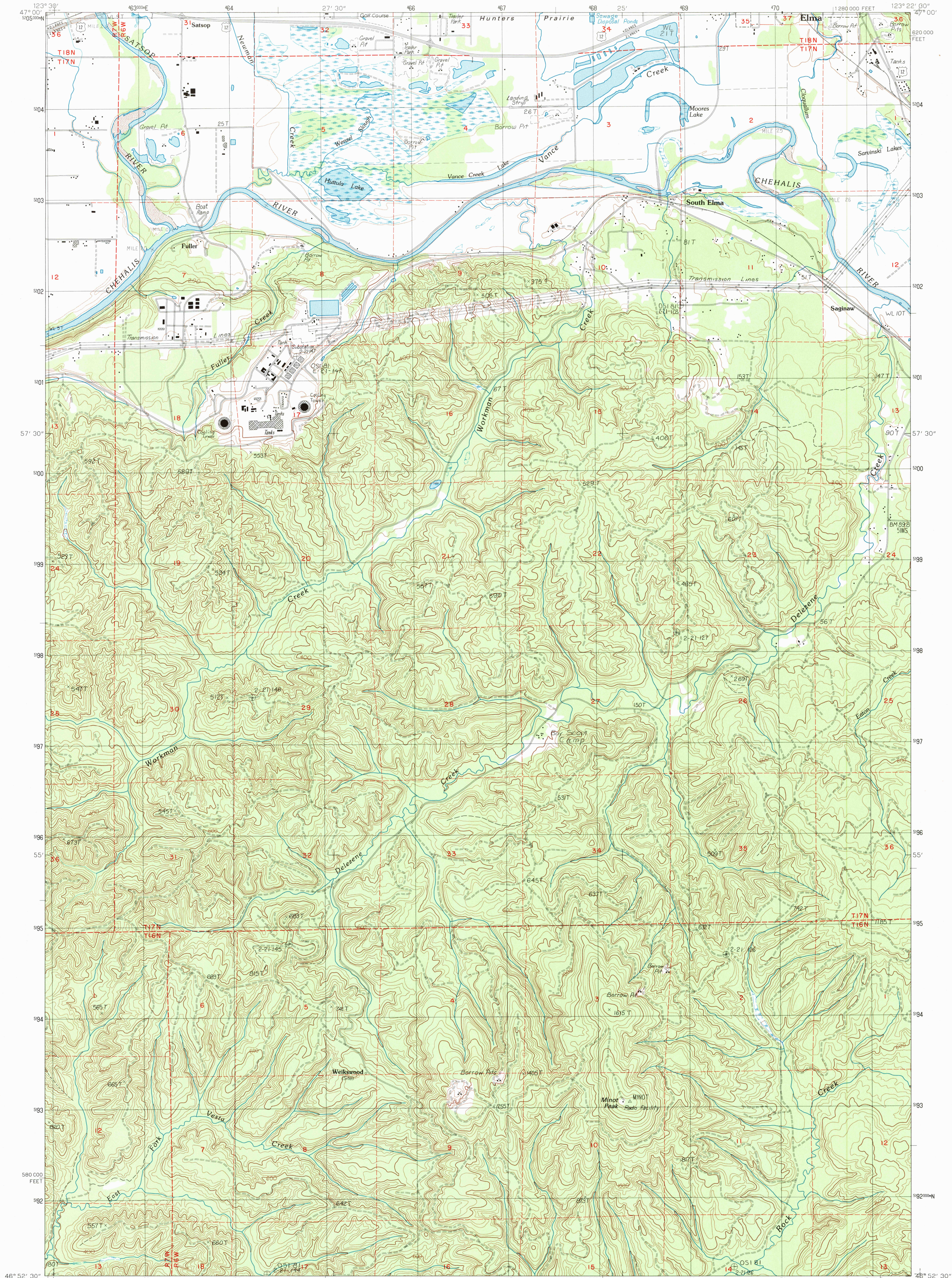


UNITED STATES  
DEPARTMENT OF THE INTERIOR  
GEOLOGICAL SURVEY

SOUTH ELMA QUADRANGLE  
WASHINGTON—GRAYS HARBOR CO.  
7.5 MINUTE SERIES (TOPOGRAPHIC)



PRODUCED BY THE UNITED STATES GEOLOGICAL SURVEY  
CONTROL BY USGS, NOS/NOAA  
COMPILED FROM AERIAL PHOTOGRAPHS TAKEN 1981 AND 1983  
FIELD CHECKED 1984, MAP EDITED 1986  
PROJECTION LAMBERT CONFORMAL CONIC  
GRID: 1000-METER UNIVERSAL TRANSVERSE MERCATOR ZONE 10  
10 000-FOOT STATE GRID TICKS WASHINGTON, SOUTH ZONE  
UTM GRID DECLINATION 0°19' WEST  
1993 MAGNETIC NORTH DECLINATION 19°30' EAST  
VERTICAL DATUM NATIONAL GEODETIC VERTICAL DATUM OF 1929  
HORIZONTAL DATUM 1927 NORTH AMERICAN DATUM (NAD 27)  
The difference between NAD 27 and North American Datum  
of 1983 (NAD 83) for 7.5 minute intersections is given in  
USGS Bulletin 1875. The NAD 83 is shown by dashed  
corner ticks  
There may be private inholdings within the boundaries of  
any Federal and State reservations shown on this map  
No distinction made between houses, barns, and other  
buildings

**PROVISIONAL MAP**  
Produced from original  
manuscript drawings. Infor-  
mation shown as of date of  
photography.

SCALE 1:24 000  
1 000 0 1000 2000 3000 4000 5000 6000 7000 8000 9000 10 000  
KILOMETERS  
1 000 0 1000 2000 3000 4000 5000 6000 7000 8000 9000 10 000  
MILES  
CONTOUR INTERVAL 40 FEET  
SUPPLEMENTARY CONTOUR INTERVAL 20 FEET  
CONTROL ELEVATIONS SHOWN TO THE NEAREST 0.1 FOOT  
OTHER ELEVATIONS SHOWN TO THE NEAREST FOOT  
To convert meters to feet multiply by 3.2808  
To convert feet to meters multiply by 0.3048  
THIS MAP COMPLIES WITH NATIONAL MAP ACCURACY STANDARDS  
FOR SALE BY THE U.S. GEOLOGICAL SURVEY, DENVER, COLORADO 80225  
OR RESTON, VIRGINIA 22092

QUADRANGLE LOCATION		
1	2	3
4	5	6
7	8	

ADJOINING 7.5 QUADRANGLE NAMES

1	Prices Peak
2	Elma
3	McClary
4	Montesano
5	Malone
6	Brooklyn
7	Blue Mountain
8	Cedarville

PHOTOINSPECTED FROM 1991 SOURCE; NO MAJOR CULTURE OR  
DRAINAGE CHANGES OBSERVED. NAMES VERIFIED 1993

**ROAD LEGEND**  
Improved Road  
Unimproved Road  
Trail  
Interstate Route  
U.S. Route  
State Route  
**SOUTH ELMA, WASH.**  
PROVISIONAL EDITION 1986  
46123-H4-TF-024  
MINOR REVISION 1993

