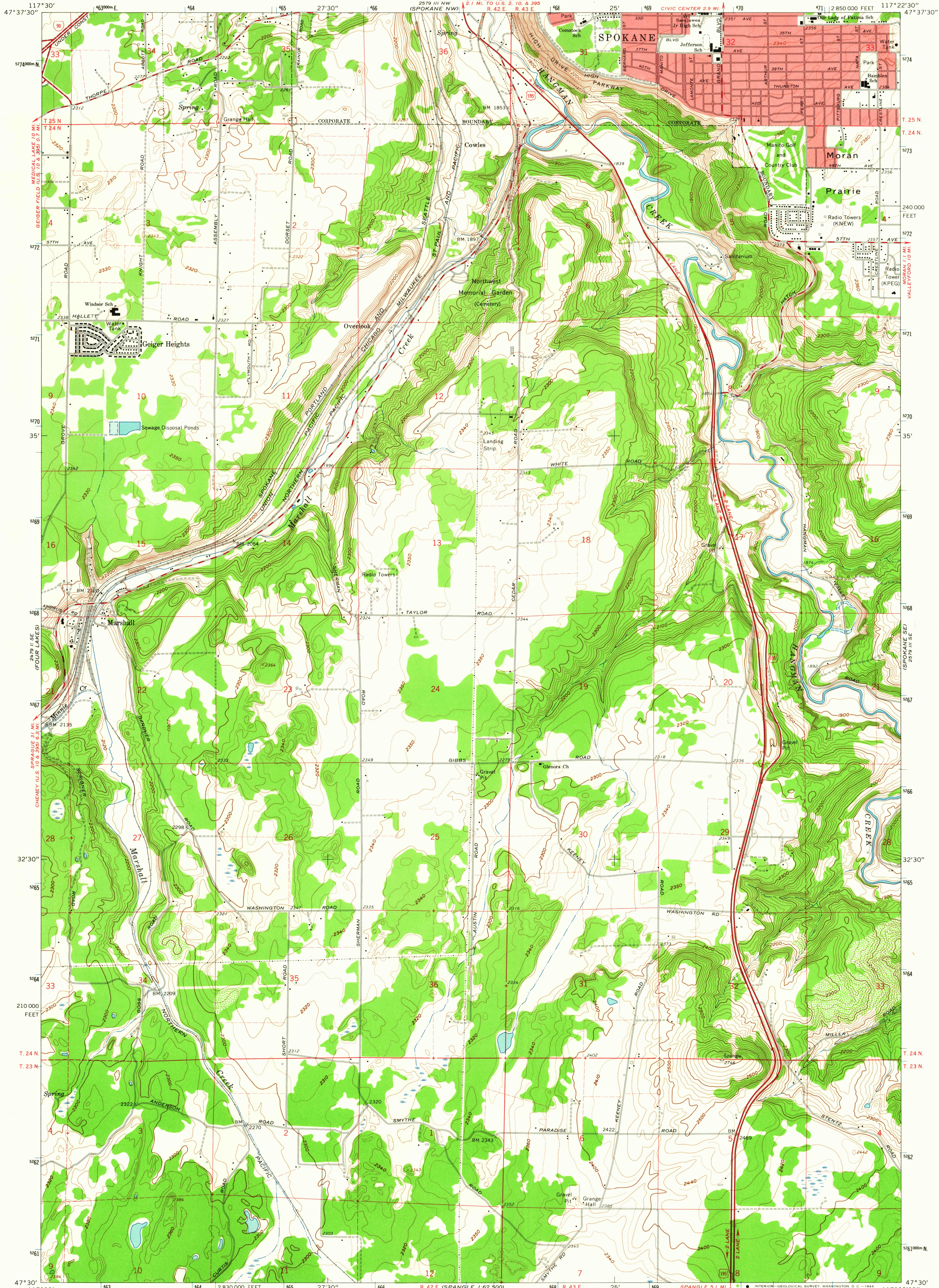


UNITED STATES
DEPARTMENT OF THE INTERIOR
GEOLOGICAL SURVEY

SPOKANE SW QUADRANGLE
WASHINGTON-SPOKANE CO.
7.5 MINUTE SERIES (TOPOGRAPHIC)
SW/4 SPOKANE 15' QUADRANGLE



Mapped, edited, and published by the Geological Survey
Control by USGS and USC&GS

Topography by photogrammetric methods from aerial photographs
taken 1946 and planetable surveys 1950. Revised from aerial
photographs taken 1962. Field checked 1963

Polyconic projection. 1927 North American datum
10,000-foot grid based on Washington coordinate system,
north zone

1000-meter Universal Transverse Mercator grid ticks,
zone 11, shown in blue

Red tint indicates area in which only landmark buildings are shown

Fine red dashed lines indicate selected fence lines

SCALE 1:24,000

CONTOUR INTERVAL 20 FEET
DOTTED LINES REPRESENT 10-FOOT CONTOURS
DATUM IS MEAN SEA LEVEL

UTM GRID AND 1963 MAGNETIC NORTH
DECLINATION AT CENTER OF SHEET

THIS MAP COMPLIES WITH NATIONAL MAP ACCURACY STANDARDS
FOR SALE BY U. S. GEOLOGICAL SURVEY, DENVER 25, COLORADO OR WASHINGTON 25, D. C.
A FOLDER DESCRIBING TOPOGRAPHIC MAPS AND SYMBOLS IS AVAILABLE ON REQUEST

ROAD CLASSIFICATION
Heavy-duty ——— Light-duty ———
Medium-duty ——— Unimproved dirt ———
Interstate Route ——— U. S. Route ———

SPOKANE SW, WASH.
SW/4 SPOKANE 15' QUADRANGLE
N4730—W11722.5/7.5

1963

AMS 2579 III SW—SERIES V891

OCT 20 1964

3650

U.S.G.S.
FILE COPY
TOPOGRAPHIC DIVISION