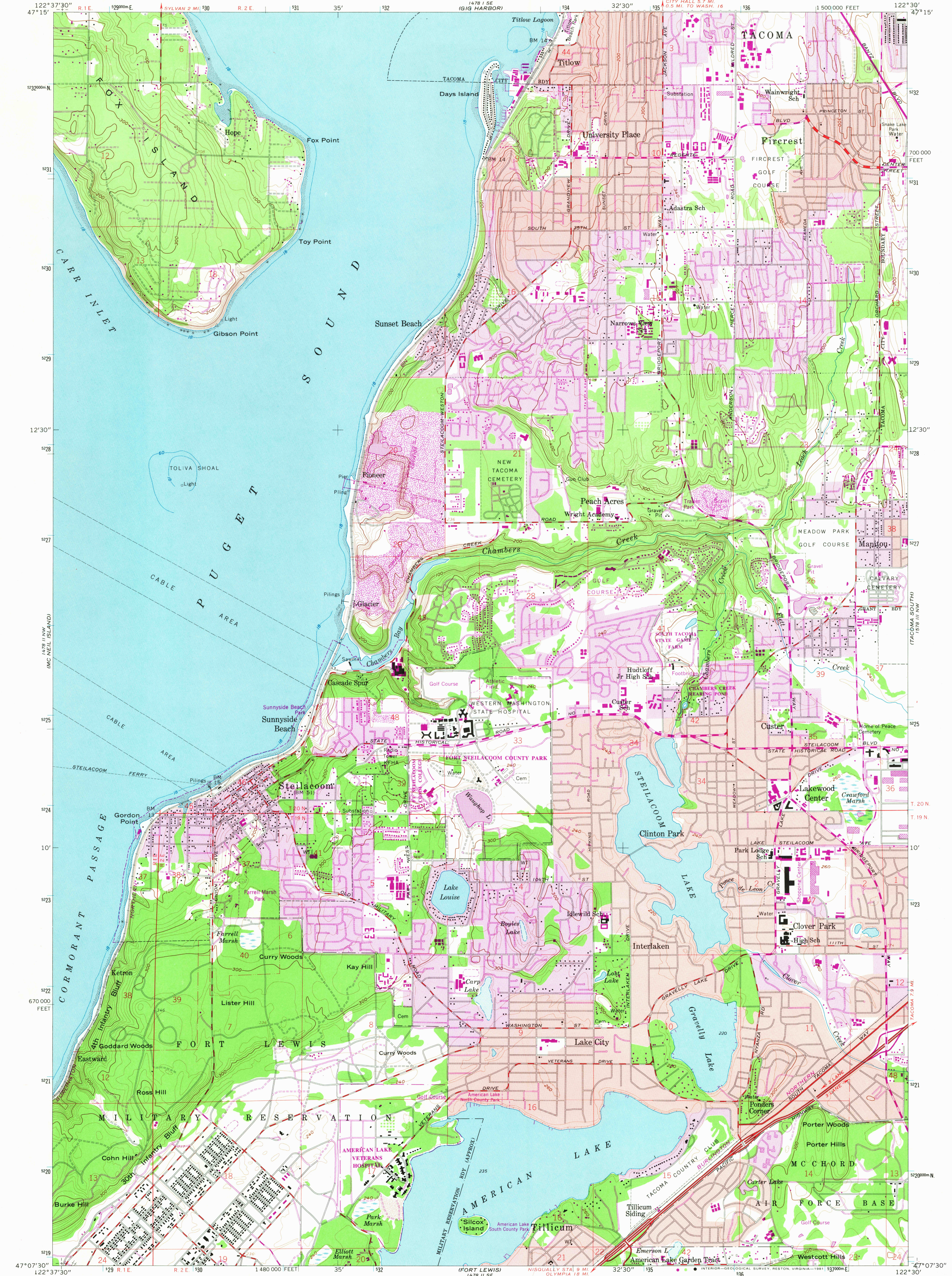


FOX ISLAND
(1478 1 SE)
122°37'30"

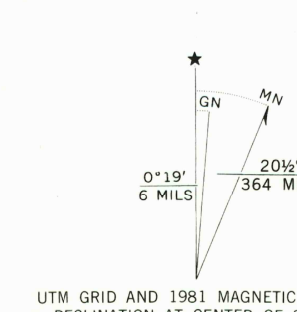
UNITED STATES
DEPARTMENT OF THE INTERIOR
GEOLOGICAL SURVEY

STEILACOOM QUADRANGLE
WASHINGTON—PIERCE CO.
7.5 MINUTE SERIES (TOPOGRAPHIC)
NE/4 ANDERSON ISLAND 15' QUADRANGLE
1:500,000 FEET
122°30"

155°14' NW
(TACOMA NORTH)
47°15'



Maped by the Defense Mapping Agency
Edited and published by the Geological Survey
Control by USGS and NOS/NOAA
Topography by photogrammetric methods from aerial
photographs taken 1947. Revised by the Geological Survey 1959
Selected hydrographic data compiled from NOS chart 6460 (1958)
This information is not intended for navigational purposes
Polyconic projection. 10,000-foot grid ticks based on Washington
coordinate system, south zone. 1000-meter Universal Transverse
Mercator grid ticks, zone 10, shown in blue. 1927 North
American Datum. To place on the predicted North American
Datum 1983 move the projection lines 23 meters north and
54 meters east as shown by dashed corner ticks
Red tint indicates areas in which only landmark buildings are shown
There may be private inholdings within the boundaries of the
National or State reservations shown on this map
Revisions shown in purple and woodland compiled by the
Geological Survey from aerial photographs taken 1978
and other sources. This information not field checked
Map edited 1981
Purple tint indicates extension of urban areas



SCALE 1:24,000
(PORT LEWIS)
1478 1 SE
N 15° 14' NW
OLYMPIA 18 MI
CONTOUR INTERVAL 20 FEET
NATIONAL GEODETIC VERTICAL DATUM OF 1929
DEPTH CURVES IN FEET—DATUM IS MEAN LOWER LOW WATER
THE RELATIONSHIP BETWEEN THE TWO DATUMS IS VARIABLE
SHORELINE SHOWN REPRESENTS THE APPROXIMATE LINE OF MEAN HIGH WATER
THE AVERAGE RANGE OF TIDE IS APPROXIMATELY 6 FEET
WASHINGTON
QUADRANGLE LOCATION

ROAD CLASSIFICATION
Heavy-duty ——— Light-duty ———
Medium-duty ——— Unimproved dirt ———
Interstate Route U.S. Route State Route
STEILACOOM, WASH.
NE/4 ANDERSON ISLAND 15' QUADRANGLE
N4707.5—W12230/7.5
1959
PHOTOREVISED 1981
DMA 1478 1 NE—SERIES V891

NOV 12 1981

3100