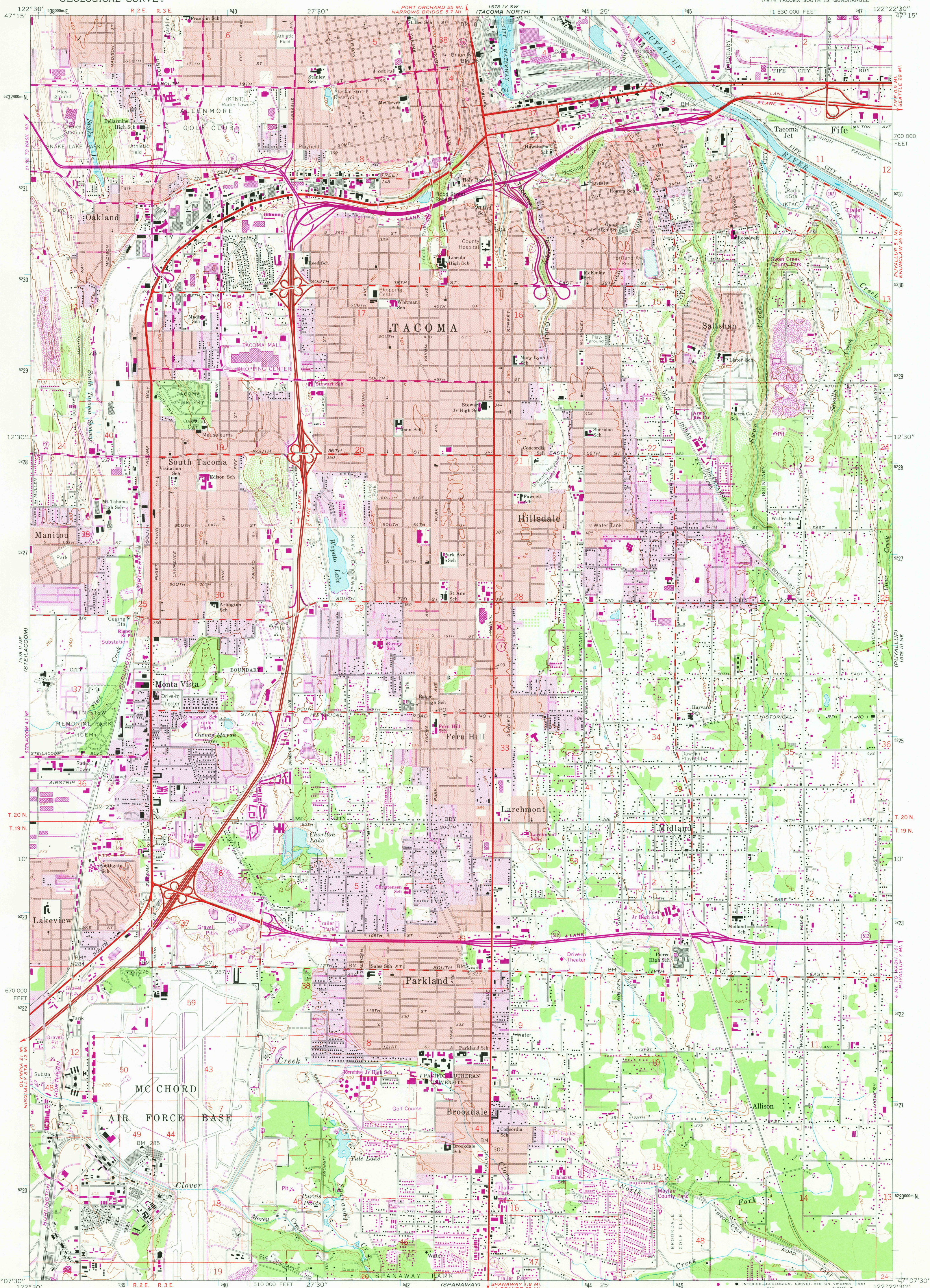
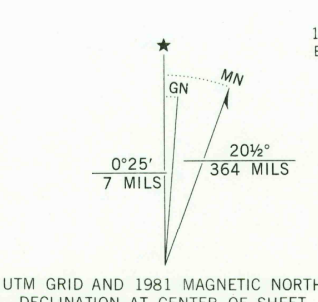


UNITED STATES
DEPARTMENT OF THE INTERIOR
GEOLOGICAL SURVEY

TACOMA SOUTH QUADRANGLE
WASHINGTON—PIERCE CO.
7.5 MINUTE SERIES (TOPOGRAPHIC)



Mapped, edited, and published by the Geological Survey
Control by USGS, NOS/NOAA, and USCE
Topography by photogrammetric methods from aerial
photographs taken 1957. Field checked 1961.
Selected hydrographic data compiled from NOS chart 6407 (1958)
This information is not intended for navigational purposes.
Polyconic projection. 10,000-foot grid ticks based on Washington
coordinate system, south zone. 1000-meter Universal Transverse
Mercator grid ticks, zone 10, shown in blue. 1927 North American
Datum. To place on the predicted North American Datum
1983 move the projection lines 23 meters north and 94
meters east as shown by dashed corner ticks.
Red tint indicates areas in which only landmark buildings are shown
There may be private inholdings within the boundaries of the
National or State reservations shown on this map.
Revisions shown in purple and woodland compiled from aerial
photographs taken 1978 and other sources. This information
not field checked. Map edited 1981.
Purple tint indicates extension of urban areas.



CONTOUR INTERVAL 20 FEET
DOTTED LINES REPRESENT 10-FOOT CONTOURS
NATIONAL GEODETIC VERTICAL DATUM OF 1929
DEPTH CURVES AND SOUNDINGS IN FEET—DATUM IS MEAN LOWER LOW WATER
THE RELATIONSHIP BETWEEN THE TWO DATUMS IS VARIABLE

THIS MAP COMPLIES WITH NATIONAL MAP ACCURACY STANDARDS
FOR SALE BY U.S. GEOLOGICAL SURVEY, DENVER, COLORADO 80225, OR RESTON, VIRGINIA 22092
A FOLDER DESCRIBING TOPOGRAPHIC MAPS AND SYMBOLS IS AVAILABLE ON REQUEST



ROAD CLASSIFICATION
Heavy-duty ——— Light-duty ———
Medium-duty ——— Unimproved dirt ———
Interstate Route U.S. Route State Route

TACOMA SOUTH, WASH.
NW 1/4 TACOMA SOUTH 15' QUADRANGLE
N 47° 07' 30" W 122° 22' 30"

1961
PHOTOREVISED 1981
DMA 1578 III NW—SERIES V881

RETURN TO:
USGS AND HISTORICAL MAP ARCHIVES

DEC 18 1981

2950