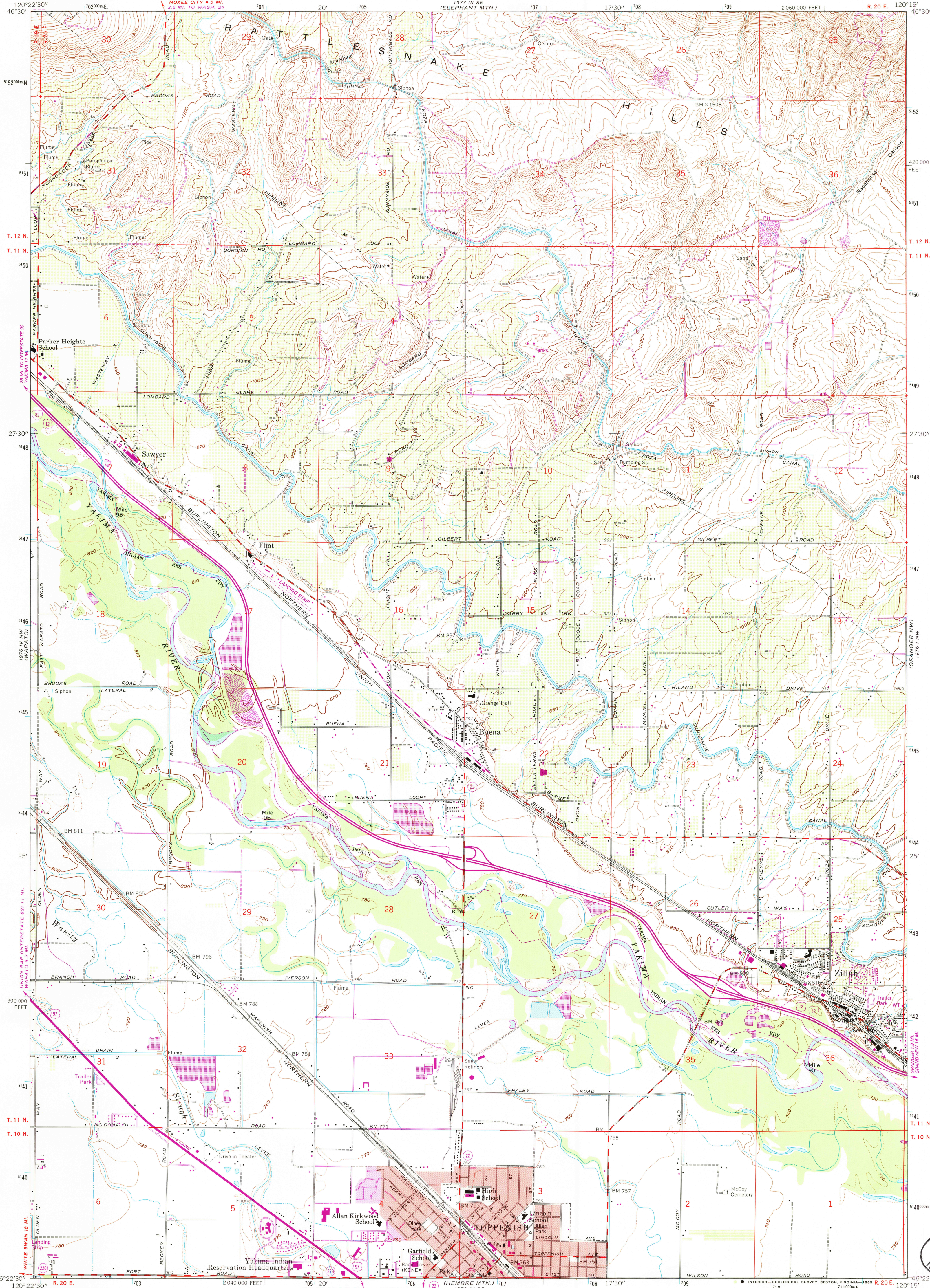
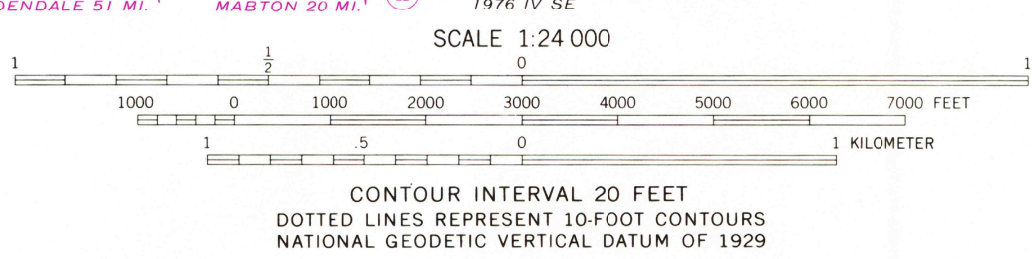


UNITED STATES
DEPARTMENT OF THE INTERIOR
GEOLOGICAL SURVEY

TOPPENISH QUADRANGLE
WASHINGTON-YAKIMA CO.
7.5 MINUTE SERIES (TOPOGRAPHIC)



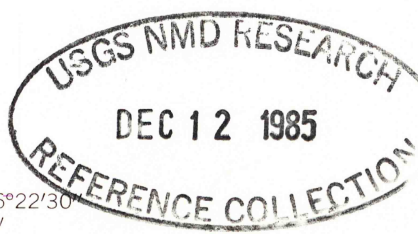
Mapped, edited, and published by the Geological Survey
Control by USGS and NOS/NOAA
Topography from aerial photographs by photogrammetric methods
Aerial photographs taken 1956. Field checked 1958
Polyconic projection. 1927 North American datum
10,000-foot grid based on Washington coordinate system, south zone
1000-meter Universal Transverse Mercator grid ticks,
zone 10, shown in blue.
Red tint indicates areas in which only
landmark buildings are shown
Unchecked elevations are shown in brown
To place on the predicted North American Datum 1983,
move the projection lines 20 meters north and
88 meters east as shown by dashed corner ticks
There may be private inholdings within the boundaries of
the National or State reservations shown on this map



ROAD CLASSIFICATION
Primary highway, hard surface ———— Improved surface ————
Secondary highway, hard surface ———— Unimproved road ————
Interstate Route ———— U. S. Route ———— State Route ————



TOPPENISH, WASH.
46120-03-TF-024
1958
PHOTOREVISED 1985
DMA 1976 IV NE-SERIES V891



THIS MAP COMPLIES WITH NATIONAL MAP ACCURACY STANDARDS
FOR SALE BY U. S. GEOLOGICAL SURVEY, DENVER, COLORADO 80225, OR RESTON, VIRGINIA 22092
A FOLDER DESCRIBING TOPOGRAPHIC MAPS AND SYMBOLS IS AVAILABLE ON REQUEST

Revisions shown in purple compiled from aerial photographs
taken 1981 and other sources. This information not
field checked. Map edited 1985
Purple tint indicates extension of urban areas