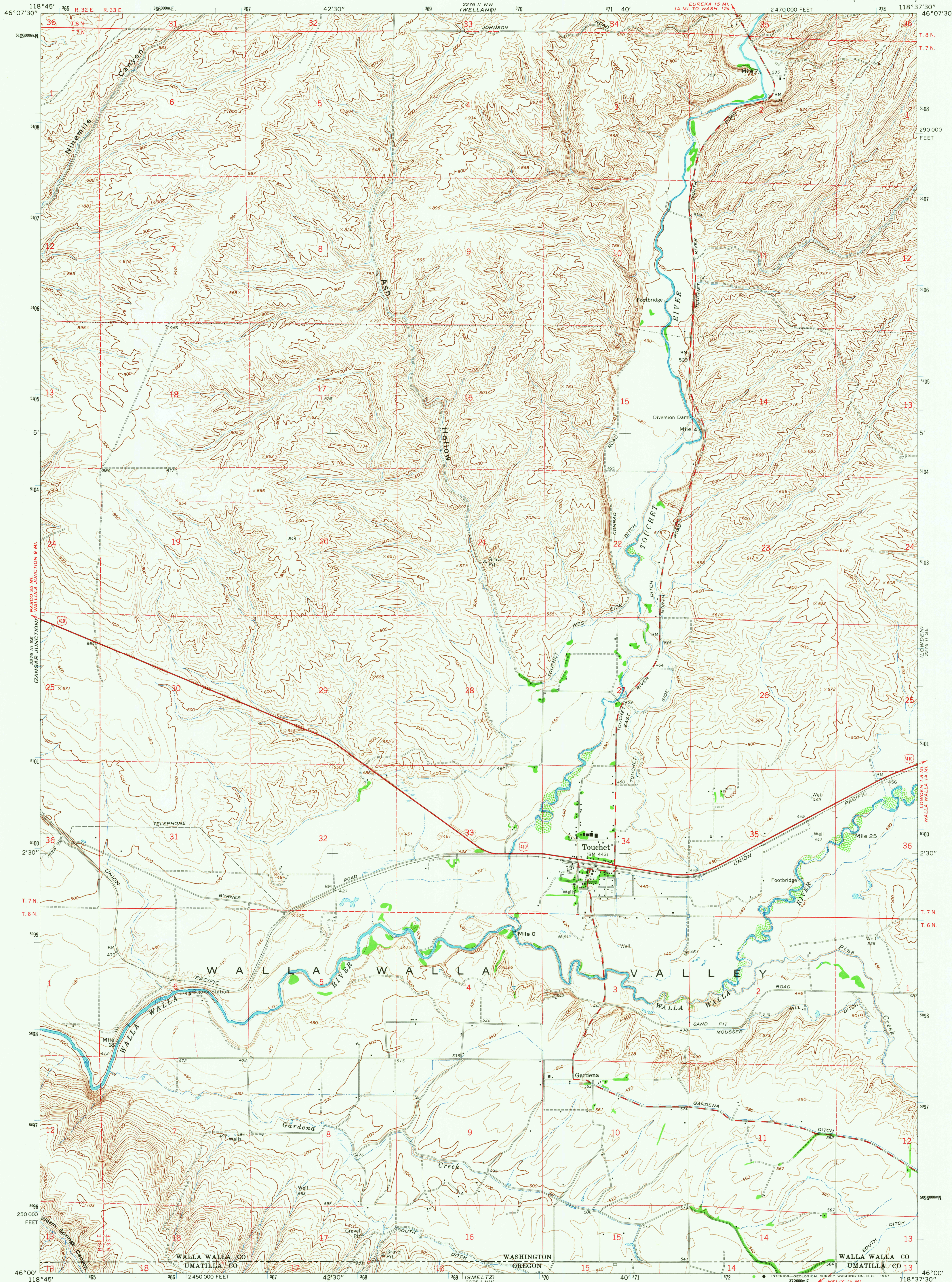


2276 II NE  
(WELLAND)

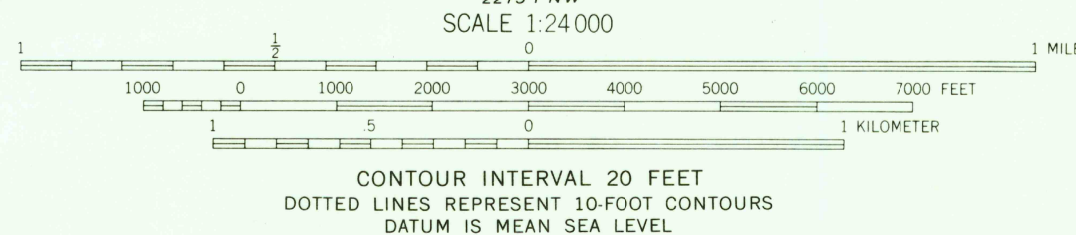
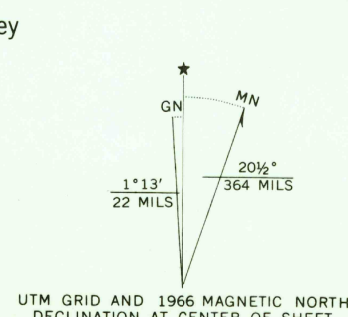
UNITED STATES  
DEPARTMENT OF THE INTERIOR  
GEOLOGICAL SURVEY

TOUCHET QUADRANGLE  
WASHINGTON-OREGON  
7.5 MINUTE SERIES (TOPOGRAPHIC)

2276 II NE  
(TRULDI)



Mapped, edited, and published by the Geological Survey  
Control by USGS and USC&GS  
Topography by photogrammetric methods from aerial  
photographs taken 1964. Field checked 1966  
Polyconic projection. 1927 North American datum  
10,000-foot grid based on Washington coordinate system,  
south zone  
1000-meter Universal Transverse Mercator grid ticks,  
zone 11, shown in blue  
Fine red dashed lines indicate selected fence lines



ROAD CLASSIFICATION  
Heavy-duty ——— Light-duty ———  
Medium-duty ——— Unimproved dirt ———  
U.S. Route

USGS TOUCHET, WASH.-OREG.  
Historical File N4600-W11837.5/7.5  
Topographic Division 1966

AMS 2276 II SW-SERIES V891

U.S.G.S.  
FILE COPY  
TOPOGRAPHIC DIVISION

2790

APR 9 1968