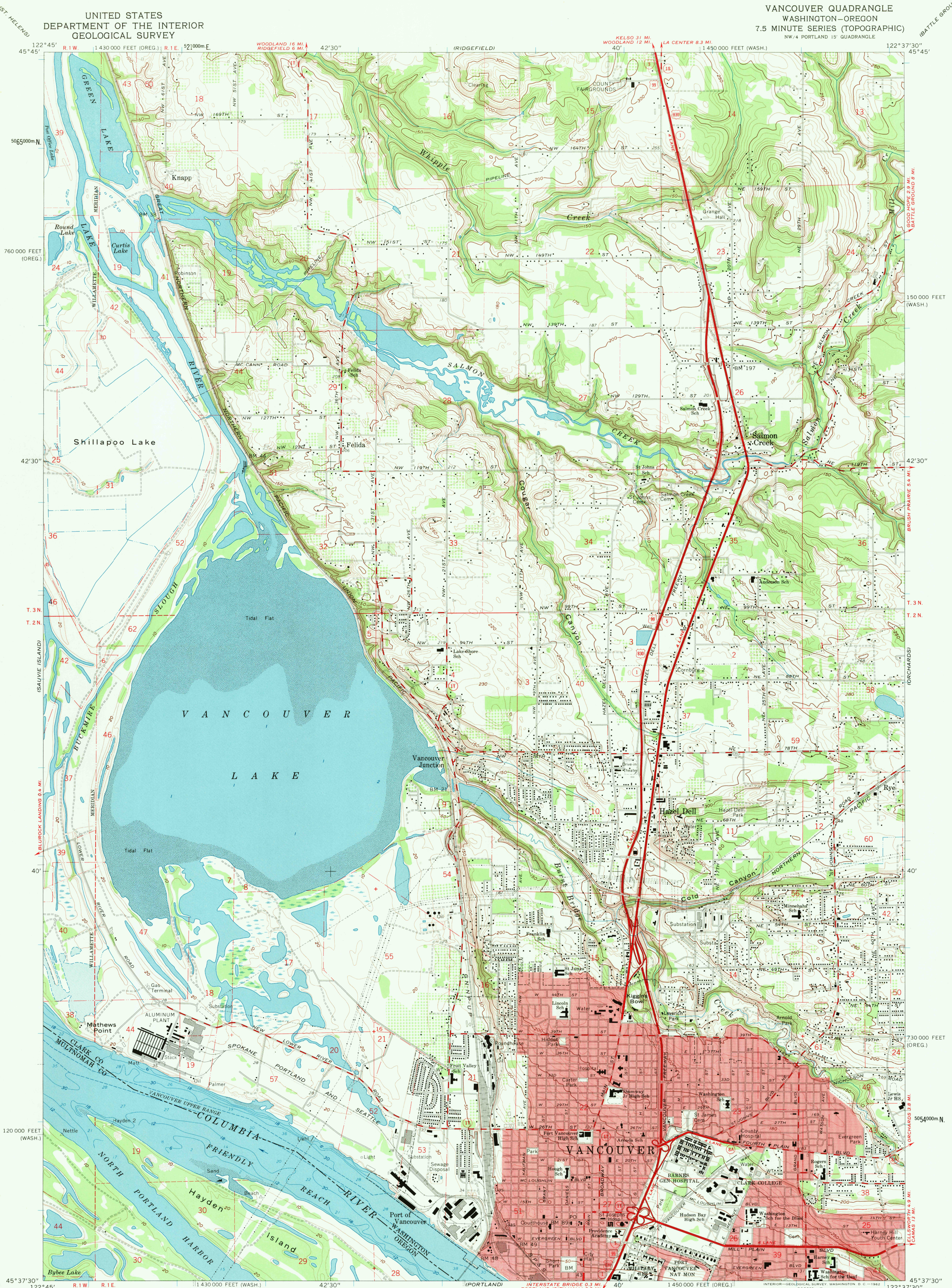


UNITED STATES  
DEPARTMENT OF THE INTERIOR  
GEOLOGICAL SURVEY

VANCOUVER QUADRANGLE  
WASHINGTON-OREGON  
7.5 MINUTE SERIES (TOPOGRAPHIC)  
NW/4 PORTLAND 15' QUADRANGLE



Mapped, edited, and published by the Geological Survey  
Control by USGS and USC&GS  
Topography from aerial photographs by photogrammetric methods  
and by plane-table surveys 1929-1930. Culture and drainage in part  
by USC&GS. Aerial photographs taken 1951. Field checked 1954  
Revised from aerial photographs taken 1960. Field checked 1961  
Selected hydrographic data compiled from USC&GS Charts  
6154 (1959) and 6155 (1961). This information is not intended  
for navigational purposes  
Polyconic projection. 1927 North American datum.  
10,000-foot grids based on Washington coordinate system, south zone  
and Oregon coordinate system, north zone. 1000-meter Universal  
Transverse Mercator grid ticks, zone 10, shown in blue  
Red tint indicates areas in which only landmark buildings are shown  
Dashed land lines indicate approximate locations  
Fine red dashed lines indicate selected fence lines

TRUE NORTH  
MAGNETIC NORTH  
APPROXIMATE MEAN  
DECLINATION, 1961

SCALE 1:24,000  
1 0 1000 2000 3000 4000 5000 6000 7000 FEET  
1 0 1 2 3 4 5 6 7 8 9 10 KILOMETER  
CONTOUR INTERVAL 10 FEET  
DATUM IS MEAN SEA LEVEL  
DEPTH CURVES AND SOUNDINGS IN FEET—COLUMBIA RIVER DATUM  
SHORELINE SHOWN REPRESENTS THE APPROXIMATE LINE OF MEAN HIGH WATER  
THE MEAN RANGE OF TIDE IS APPROXIMATELY 2 FEET

THIS MAP COMPLIES WITH NATIONAL MAP ACCURACY STANDARDS  
FOR SALE BY U.S. GEOLOGICAL SURVEY, DENVER 25, COLORADO OR WASHINGTON 25, D. C.  
A FOLDER DESCRIBING TOPOGRAPHIC MAPS AND SYMBOLS IS AVAILABLE ON REQUEST



ROAD CLASSIFICATION  
Heavy-duty ——— Light-duty ———  
Medium-duty ——— Unimproved dirt ———  
Interstate Route U.S. Route State Route

VANCOUVER, WASH.-OREG.  
NW/4 PORTLAND 15' QUADRANGLE  
N4537.5-W12237.5/7.5

1961

U.S.G.S.  
TOPOGRAPHIC DIVISION

JUN 21 1971

1725

16