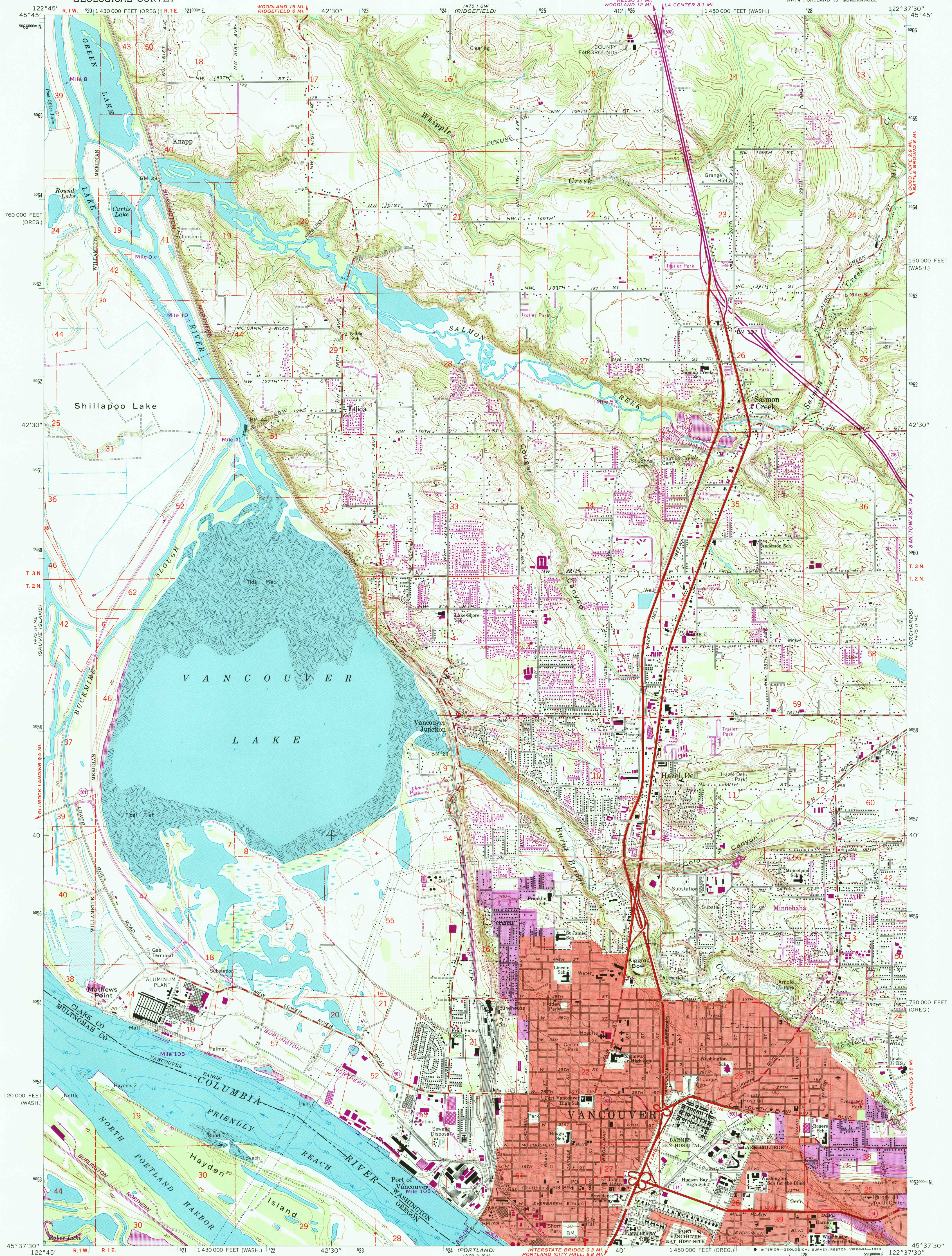


UNITED STATES
DEPARTMENT OF THE INTERIOR
GEOLOGICAL SURVEY

VANCOUVER QUADRANGLE
WASHINGTON—OREGON
7.5 MINUTE SERIES (TOPOGRAPHIC)
NW 4 PORTLAND 15' QUADRANGLE



Mapped, edited, and published by the Geological Survey

Control by USGS and NOS/NOAA*

Topography from aerial photographs by photogrammetric methods and by planetable surveys 1929–1930. Culture and drainage in part by NOS/NOAA. Aerial photographs taken 1951. Field checked 1954. Revised from aerial photographs taken 1960. Field checked 1961.

Selected hydrographic data compiled from NOS/NOAA Charts 6154 (1959) and 6155 (1961). This information is not intended for navigational purposes.

Polyconic projection. 1927 North American datum. 10,000-foot grids based on Washington coordinate system, south zone and Oregon coordinate system, north zone. 1000-meter Universal Transverse Mercator grid ticks, zone 10, shown in blue.

Red tint indicates areas in which only landmark buildings are shown. Dashed land lines indicate approximate locations. Fine red dashed lines indicate selected fence lines.

Purple tint indicates extension of urban areas

SCALE 1:24,000

CONTOUR INTERVAL 10 FEET

NATIONAL GEODETIC VERTICAL DATUM OF 1929

DEPTH CURVES AND SOUNDINGS IN FEET—COLUMBIA RIVER DATUM

SHORELINE SHOWN REPRESENTS THE APPROXIMATE LINE OF MEAN HIGH WATER

THE MEAN RANGE OF TIDE IS APPROXIMATELY 2 FEET

THIS MAP COMPLIES WITH NATIONAL MAP ACCURACY STANDARDS

FOR SALE BY U. S. GEOLOGICAL SURVEY, DENVER, COLORADO 80225, OR RESTON, VIRGINIA

A FOLDER DESCRIBING TOPOGRAPHIC MAPS AND SYMBOLS IS AVAILABLE ON REQUEST



ROAD CLASSIFICATION

Heavy-duty	Light-duty
Medium-duty	Unimproved dirt
Interstate Route	State Route

VANCOUVER, WASH.—OREG.
NW 4 PORTLAND 15' QUADRANGLE
N4537.5—W12237.5/7.5

1961
PHOTOREVISED 1978
AMS 1475 II NW—SERIES 8981

Revisions shown in purple compiled by the Geological Survey from aerial photographs taken 1975. This information not field checked. Map edited 1978.

