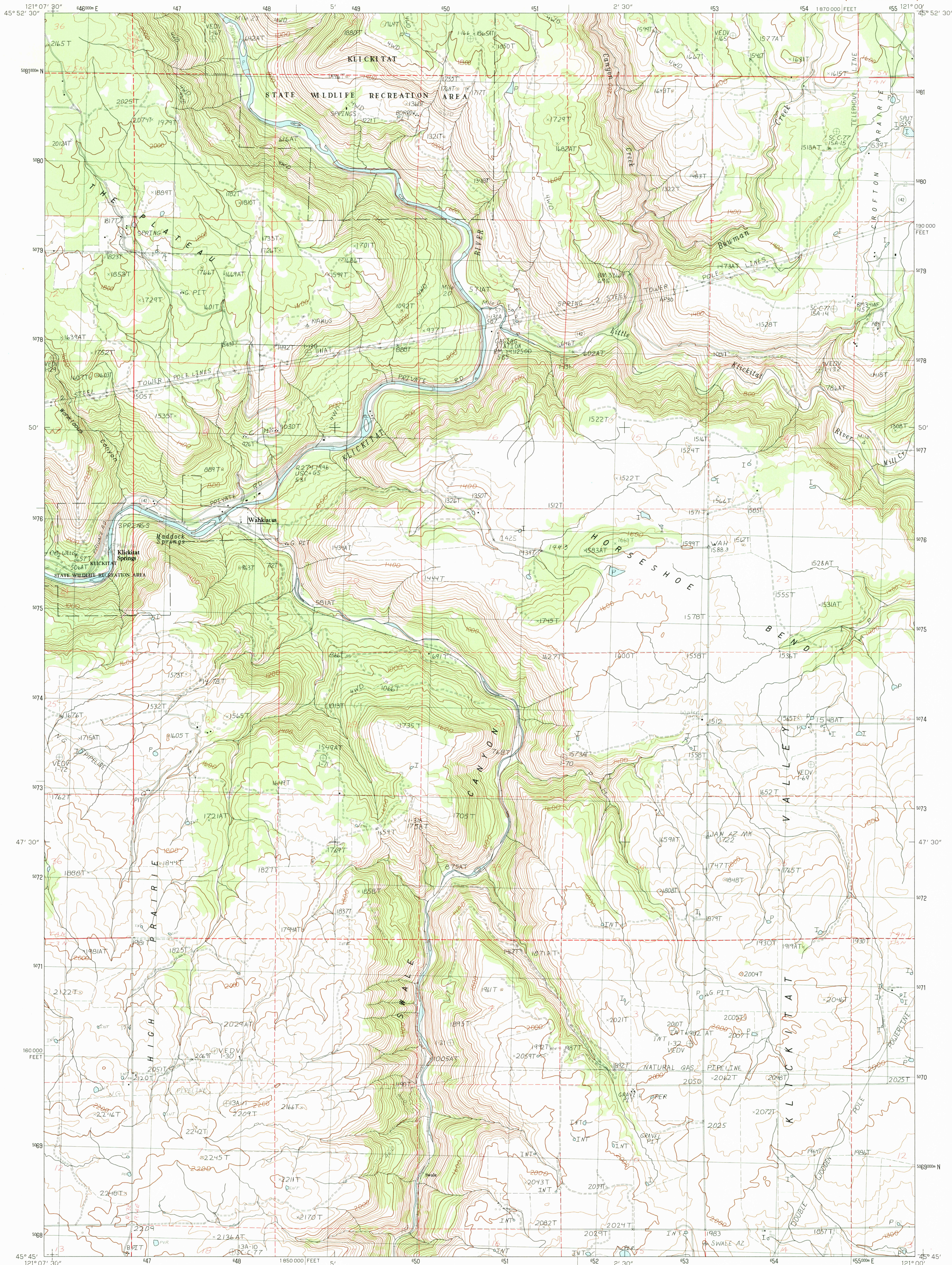


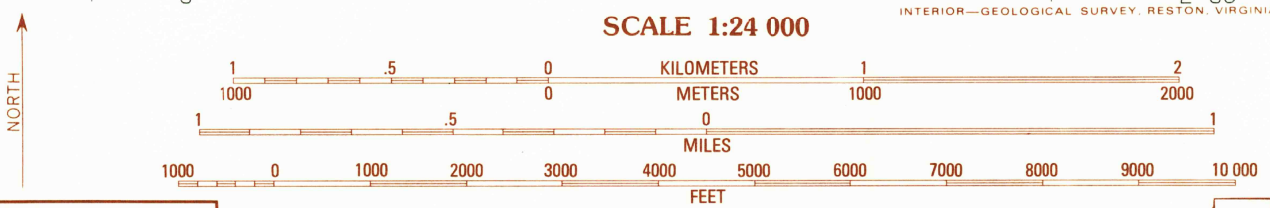
UNITED STATES  
DEPARTMENT OF THE INTERIOR  
GEOLOGICAL SURVEY

WAHKIACUS QUADRANGLE  
WASHINGTON-KLICKITAT CO.  
7.5 MINUTE SERIES (TOPOGRAPHIC)



PRODUCED BY THE UNITED STATES GEOLOGICAL SURVEY  
CONTROL BY... USGS, NOS/NOAA  
COMPILED FROM AERIAL PHOTOGRAPHS TAKEN... 1976-77  
FIELD CHECKED... 1979 MAP EDITED... 1983  
PROJECTION... LAMBERT CONFORMAL CONIC  
GRID: 1000-METER UNIVERSAL TRANSVERSE MERCATOR... ZONE 10  
10,000-FOOT STATE GRID TICKS... WASHINGTON, SOUTH ZONE  
UTM GRID DECLINATION... 20° EAST  
1980 MAGNETIC NORTH DECLINATION... 20° EAST  
VERTICAL DATUM: NATIONAL GEODETIC DATUM OF 1929  
HORIZONTAL DATUM... 1927 NORTH AMERICAN DATUM  
To place on the predicted North American Datum of 1983,  
move the projection lines as shown by dashed corner ticks  
(21 meters north / 90 meters east)  
There may be private inholdings within the boundaries of any  
Federal and State Reservations shown on this map

PROVISIONAL MAP  
Produced from original  
manuscript drawings. Infor-  
mation shown as of date of  
field check.



SCALE 1:24 000  
CONTOUR INTERVAL 40 FEET  
To convert meters to feet multiply by 3.2808  
To convert feet to meters multiply by 0.3048

1	2	3	4	5	6	7	8
Dead Canyon	Gravel Pit	White Pine Butte	Klickitat	Centerline	The Dalles North	Stacker Butte	Wishram

ROAD LEGEND  
Improved Road.....  
Unimproved Road.....  
Trail.....  
Interstate Route U.S. Route State Route

WAHKIACUS, WASH.  
PROVISIONAL EDITION 1983

THIS MAP COMPLIES WITH NATIONAL MAP ACCURACY STANDARDS  
FOR SALE BY U. S. GEOLOGICAL SURVEY, DENVER, COLORADO 80225, OR RESTON, VIRGINIA 22092

45121-G1-TF-024

RETURN TO:  
USGS AND HISTORICAL MAP ARCHIVES

JUL 15 1983