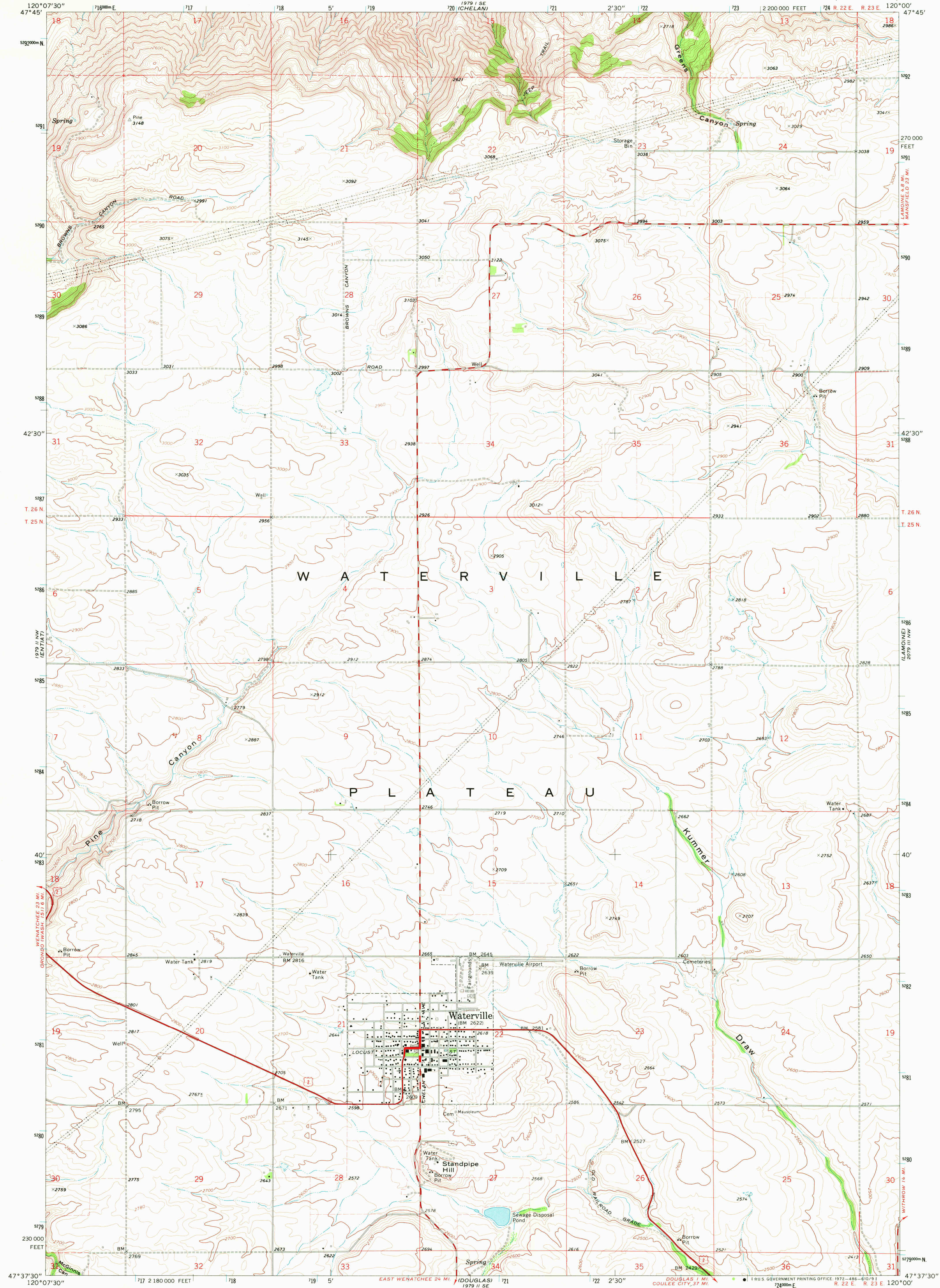


1979 I SW
WINNEBAGO

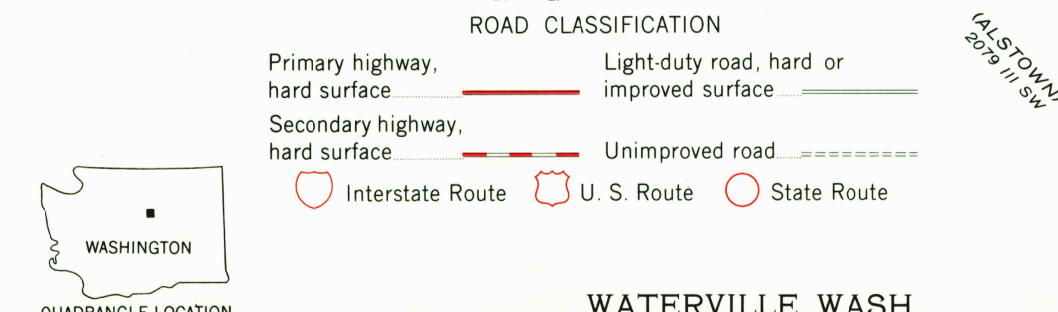
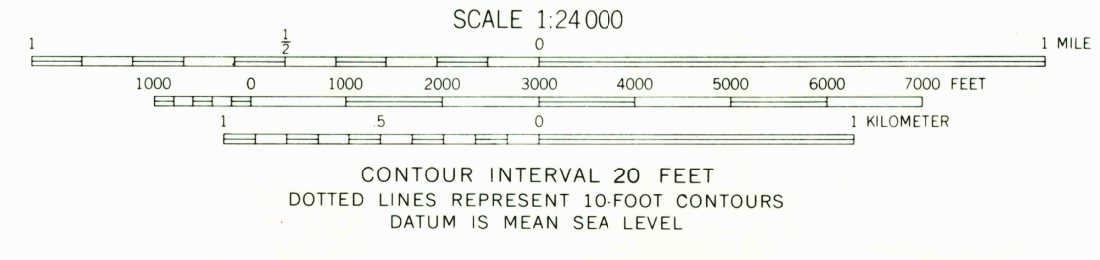
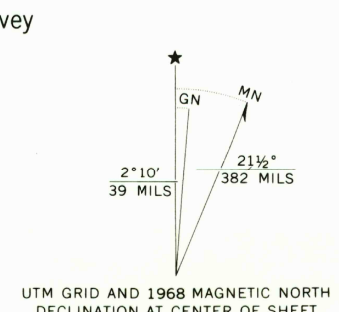
UNITED STATES
DEPARTMENT OF THE INTERIOR
GEOLOGICAL SURVEY

WATERVILLE QUADRANGLE
WASHINGTON—DOUGLAS CO.
7.5 MINUTE SERIES (TOPOGRAPHIC)

1979 I SW
(CHELAN FALLS)



Maped, edited, and published by the Geological Survey
Control by USGS and USC&GS
Topography by photogrammetric methods from aerial
photographs taken 1967. Field checked 1968
Polyconic projection. 1927 North American datum
10,000-foot grid based on Washington coordinate system,
north zone
1000-meter Universal Transverse Mercator grid ticks,
zone 10, shown in blue
Fine red dashed lines indicate selected fence lines



THIS MAP COMPLIES WITH NATIONAL MAP ACCURACY STANDARDS
FOR SALE BY U. S. GEOLOGICAL SURVEY, DENVER, COLORADO 80225, OR WASHINGTON, D. C. 20242
A FOLDER DESCRIBING TOPOGRAPHIC MAPS AND SYMBOLS IS AVAILABLE ON REQUEST

WATERVILLE, WASH.
N4737.5—W12000/7.5

1968

AMS 1979 II NE—SERIES V891

USGS
HISTORICAL FILE
TOPOGRAPHIC DIVISION
ws 11
2500
50 plan

FEB 27 1973