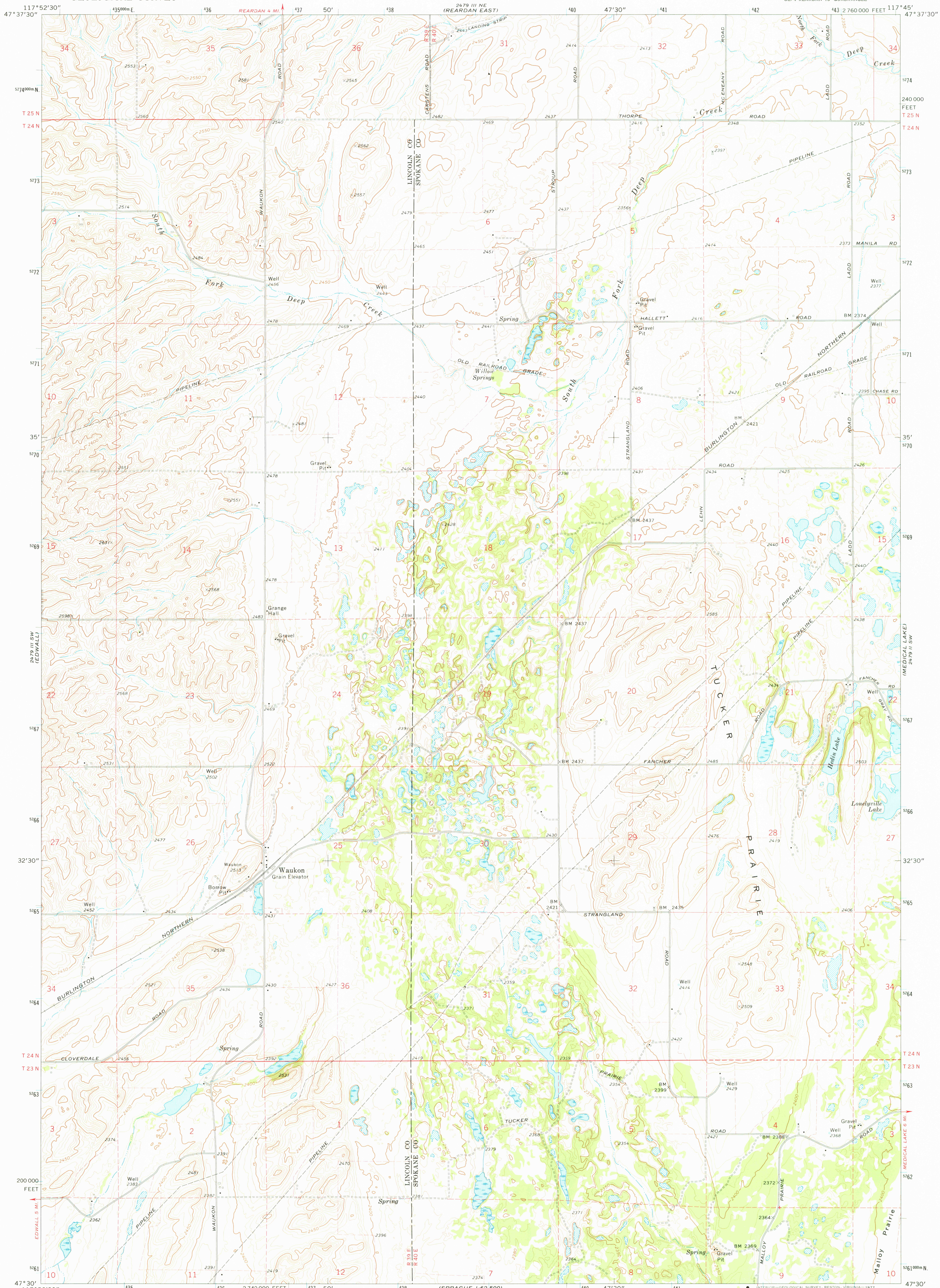
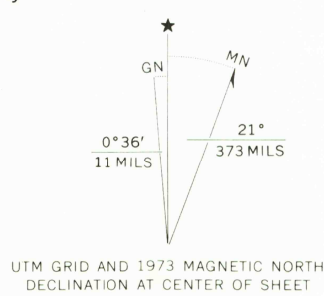


UNITED STATES  
DEPARTMENT OF THE INTERIOR  
GEOLOGICAL SURVEY

WAUKON QUADRANGLE  
WASHINGTON  
7.5 MINUTE SERIES (TOPOGRAPHIC)  
SE 1/4 REARDAN 15' QUADRANGLE



Maped, edited, and published by the Geological Survey  
Control by USGS and NOS/NOAA  
Topography by photogrammetric methods from aerial  
photographs taken 1972. Field checked 1973  
Projection and 10,000-foot grid ticks: Washington coordinate  
system, north zone (Lambert conformal conic)  
1000-metre Universal Transverse Mercator grid ticks,  
zone 11, shown in blue. 1927 North American datum  
Fine red dashed lines indicate selected fence lines



CONTOUR INTERVAL 10 FEET  
NATIONAL GEODETIC VERTICAL DATUM OF 1929



ROAD CLASSIFICATION  
Primary highway, hard surface  
Secondary highway, hard surface  
Light-duty road, hard or improved surface  
Unimproved road  
Interstate Route  
U. S. Route  
State Route

THIS MAP COMPLIES WITH NATIONAL MAP ACCURACY STANDARDS  
FOR SALE BY U. S. GEOLOGICAL SURVEY, DENVER, COLORADO 80225 OR RESTON, VIRGINIA 22092  
A FOLDER DESCRIBING TOPOGRAPHIC MAPS AND SYMBOLS IS AVAILABLE ON REQUEST

WAUKON, WASH.  
SE 1/4 REARDAN 15' QUADRANGLE  
N4730-W11745/7.5  
1973

AMS 2479 III SE-SERIES V891

APR 12 1977

2850