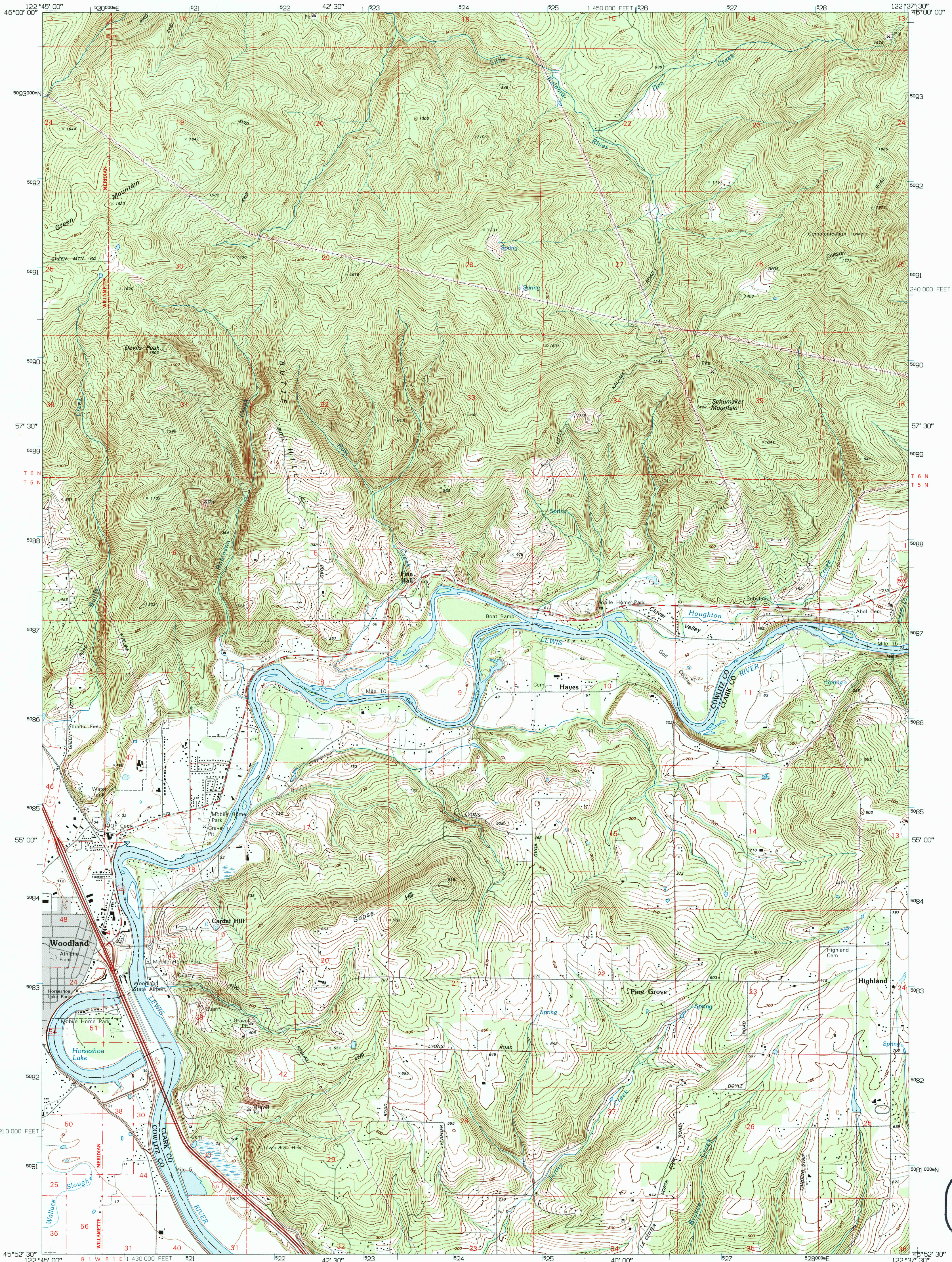
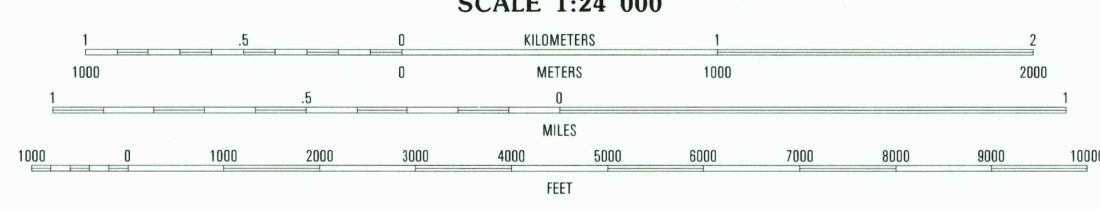
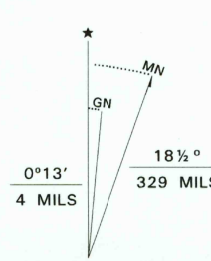


UNITED STATES
DEPARTMENT OF THE INTERIOR
GEOLOGICAL SURVEY

WOODLAND QUADRANGLE
WASHINGTON
7.5-MINUTE SERIES (TOPOGRAPHIC)



Produced by the United States Geological Survey
Control by USGS and NOS/NOAA
Compiled from imagery dated 1952 and 1970. Revised from
imagery dated 1990. PLSS and survey control
current as of 1971. Map edited 1995. Contours and land
elevations have not been revised and may conflict with
other content
North American Datum of 1927 (NAD 27). Projection and
blue 1000-meter ticks: Universal Transverse Mercator, zone 10
10 000-foot ticks: Washington Coordinate System, south zone
North American Datum of 1983 (NAD 83) is shown by dashed
corner ticks. The values of the shift between NAD 27
and NAD 83 for 7.5-minute intersections are obtainable from
National Geodetic Survey NADCON software
Fine red dashed lines indicate selected fence and field lines where
generally visible on aerial photographs. This information is unchecked



ROAD CLASSIFICATION
Primary highway
hard surface
Secondary highway
hard surface
Light-duty road, hard or
improved surface
Unimproved road
Interstate Route
U.S. Route
State Route

CONTOUR INTERVAL 20 FEET
SUPPLEMENTARY CONTOUR INTERVAL 10 FEET
NATIONAL GEODETIC VERTICAL DATUM OF 1929
TO CONVERT FEET TO METERS MULTIPLY BY 0.3048
TO CONVERT METERS TO FEET MULTIPLY BY 3.2808
COMPLIES WITH U.S. GEOLOGICAL SURVEY STANDARDS FOR SPATIAL ACCURACY (HORIZONTAL), CLASS 1
NOT TESTED FOR COMPLIANCE WITH U.S. GEOLOGICAL SURVEY STANDARDS FOR SPATIAL ACCURACY (VERTICAL)
FOR SALE BY U.S. GEOLOGICAL SURVEY
DENVER, COLORADO 80225, OR RESTON, VIRGINIA 22092
A FOLDER DESCRIBING TOPOGRAPHIC MAPS AND SYMBOLS IS AVAILABLE ON REQUEST

1	2	3	1 Kalama
			2 Woodford Creek
			3 Georges Peak
4		5	4 Deer Island
			5 Ariel
			6 Saint Helens
			7 Ridgfield
6	7	8	8 Battle Ground

WOODLAND, WA
45122-H6-TF-024
1990
DMA 1475 1 NW-SERIES V891

USGS NHD HISTORICAL
MAP ARCHIVES
JUN 21 1995
REC'D FILE COPY

