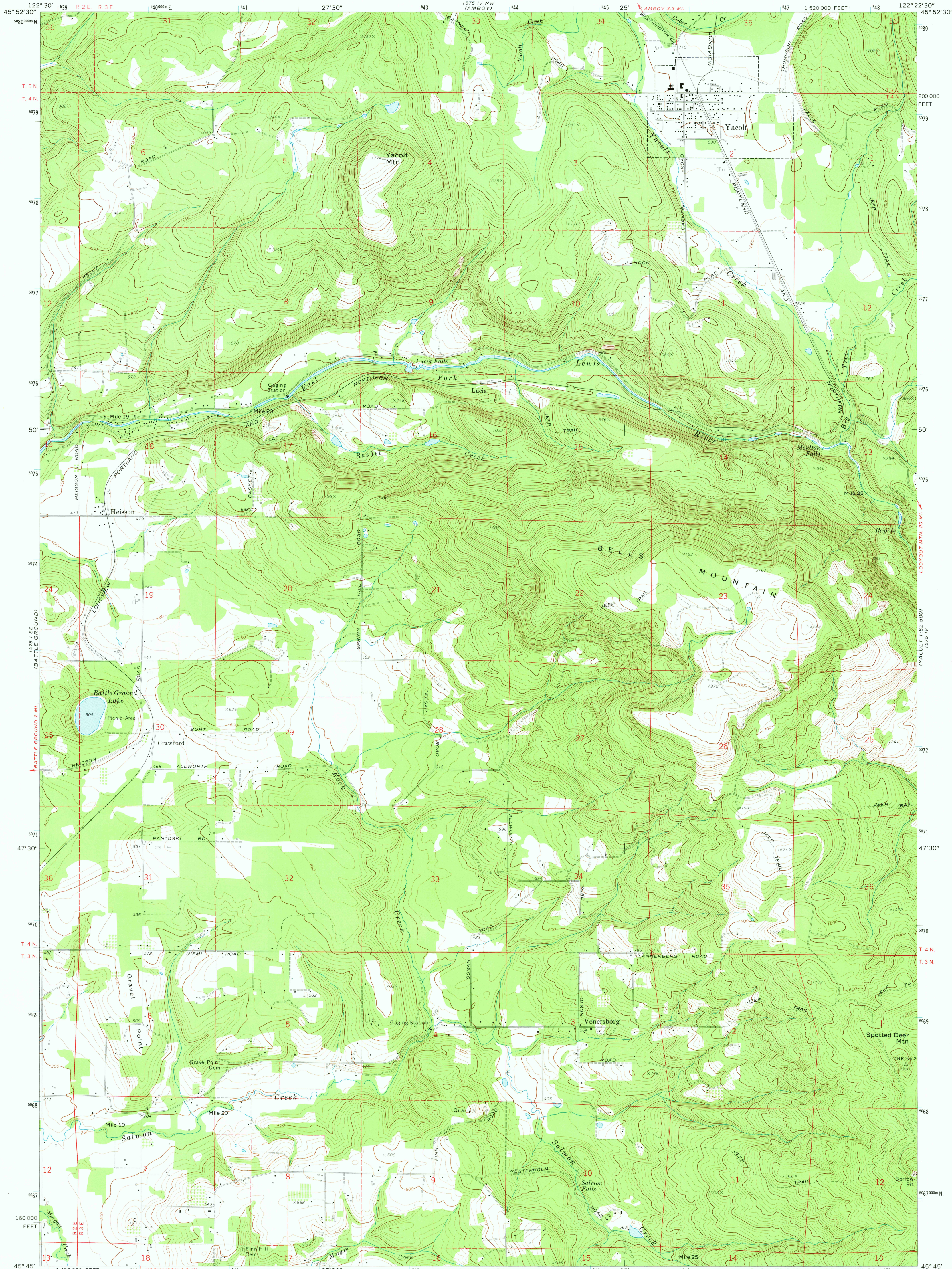
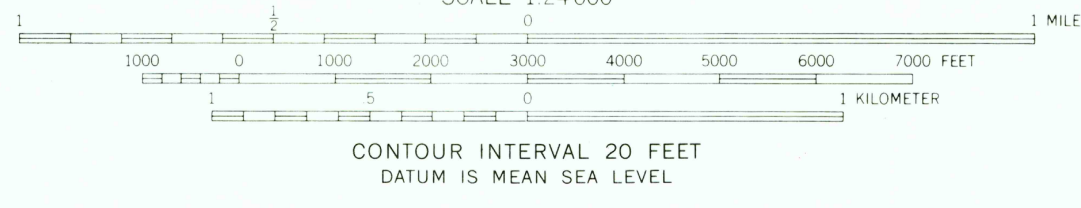
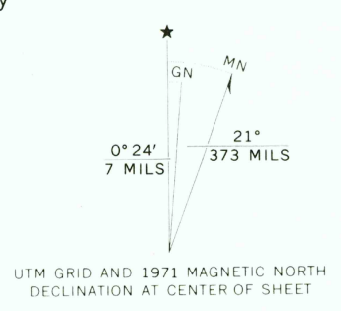


UNITED STATES
DEPARTMENT OF THE INTERIOR
GEOLOGICAL SURVEY

YACOLT QUADRANGLE
WASHINGTON-CLARK CO.
7.5 MINUTE SERIES (TOPOGRAPHIC)
SW 4 YACOLT 15' QUADRANGLE



Mapped, edited, and published by the Geological Survey
Control by USGS and USC&GS
Topography by photogrammetric methods from aerial
photographs taken 1952 and 1970. Field checked 1971
Projection and 10,000-foot grid ticks: Washington coordinate
system, south zone (Lambert conformal conic).
1000-meter Universal Transverse Mercator grid ticks,
zone 10, shown in blue. 1927 North American datum
Fine red dashed lines indicate selected fence lines



- ROAD CLASSIFICATION
- Primary highway, hard surface
 - Secondary highway, hard surface
 - Unimproved road
 - Light-duty road, hard or improved surface
 - Interstate Route
 - U. S. Route
 - State Route

USGS
Historical File
Topographic Division

YACOLT, WASH.
SW 4 YACOLT 15' QUADRANGLE
N4545-W12222.5/7.5

DEC 20 1973

FOR SALE BY U. S. GEOLOGICAL SURVEY, DENVER, COLORADO 80225 OR WASHINGTON, D. C. 20242
A FOLDER DESCRIBING TOPOGRAPHIC MAPS AND SYMBOLS IS AVAILABLE ON REQUEST

AMS 1575 IV SW-SERIES V891

3375