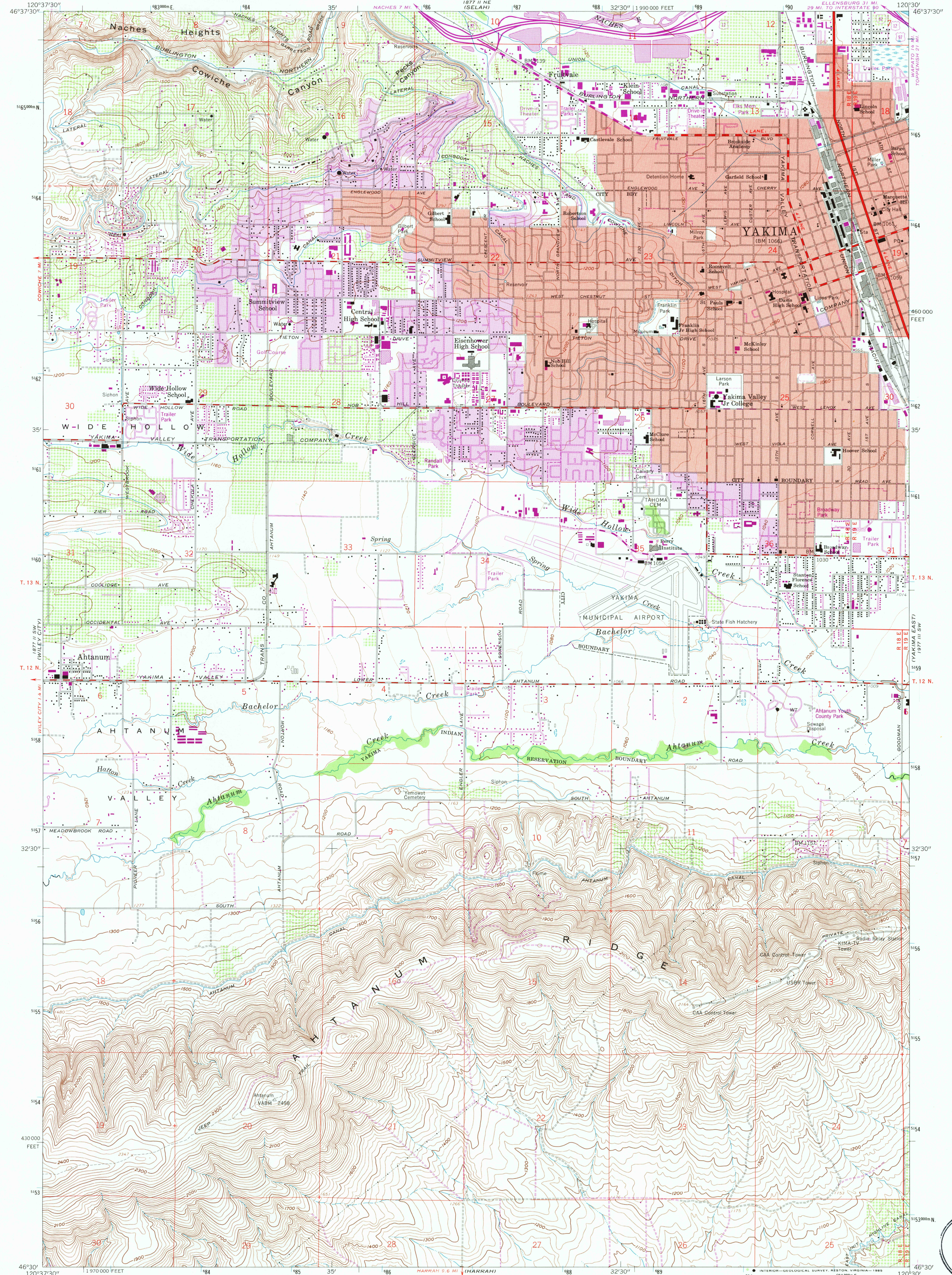


1877 U.S. NW  
(NACHES)

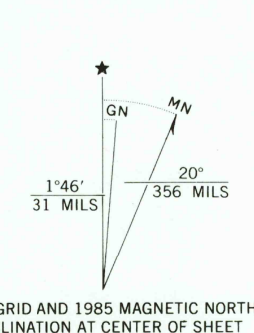
UNITED STATES  
DEPARTMENT OF THE INTERIOR  
GEOLOGICAL SURVEY

YAKIMA WEST QUADRANGLE  
WASHINGTON-YAKIMA CO.  
7.5 MINUTE SERIES (TOPOGRAPHIC)

1877 U.S. NW  
(POMONA)



Mapped, edited, and published by the Geological Survey  
Control by USGS and NOS/NOAA  
Topography from aerial photographs by photogrammetric methods  
and by planetable surveys 1958. Aerial photographs taken 1956  
Polyconic projection. 1927 North American datum  
10,000-foot grid based on Washington coordinate system, south zone  
1000-meter Universal Transverse Mercator grid ticks,  
zone 10, shown in blue  
Red tint indicates area in which only landmark buildings are shown  
Unchecked elevations are shown in brown  
To place on the predicted North American Datum 1983,  
move the projection lines 20 meters north and  
89 meters east as shown by dashed corner ticks  
There may be private inholdings within the boundaries of  
the National or State reservations shown on this map



SCALE 1:24 000  
1 000 0 1000 2000 3000 4000 5000 6000 7000 FEET  
1 0 5 10 KILOMETER  
CONTOUR INTERVAL 20 FEET  
DOTTED LINES REPRESENT 100-FOOT CONTOURS  
NATIONAL GEODETIC VERTICAL DATUM OF 1929  
THIS MAP COMPLIES WITH NATIONAL MAP ACCURACY STANDARDS  
FOR SALE BY U.S. GEOLOGICAL SURVEY, DENVER, COLORADO 80225, OR RESTON, VIRGINIA 22092  
A FOLDER DESCRIBING TOPOGRAPHIC MAPS AND SYMBOLS IS AVAILABLE ON REQUEST

ROAD CLASSIFICATION  
Heavy-duty ——— Light-duty ———  
Medium-duty ——— Unimproved dirt ———  
Interstate Route U.S. Route  
YAKIMA WEST, WASH.  
46120-E5-TF-024  
1958  
PHOTOREVISED 1985  
DMA 1877 II SE-SERIES V891  
Revisions shown in purple compiled from aerial photographs  
taken 1981 and other sources. This information not  
field checked. Map edited 1985  
Purple tint indicates extension of urban areas

USGS NMD HISTORICAL MAP  
DEC 31 1985  
REC'D FILE COPY