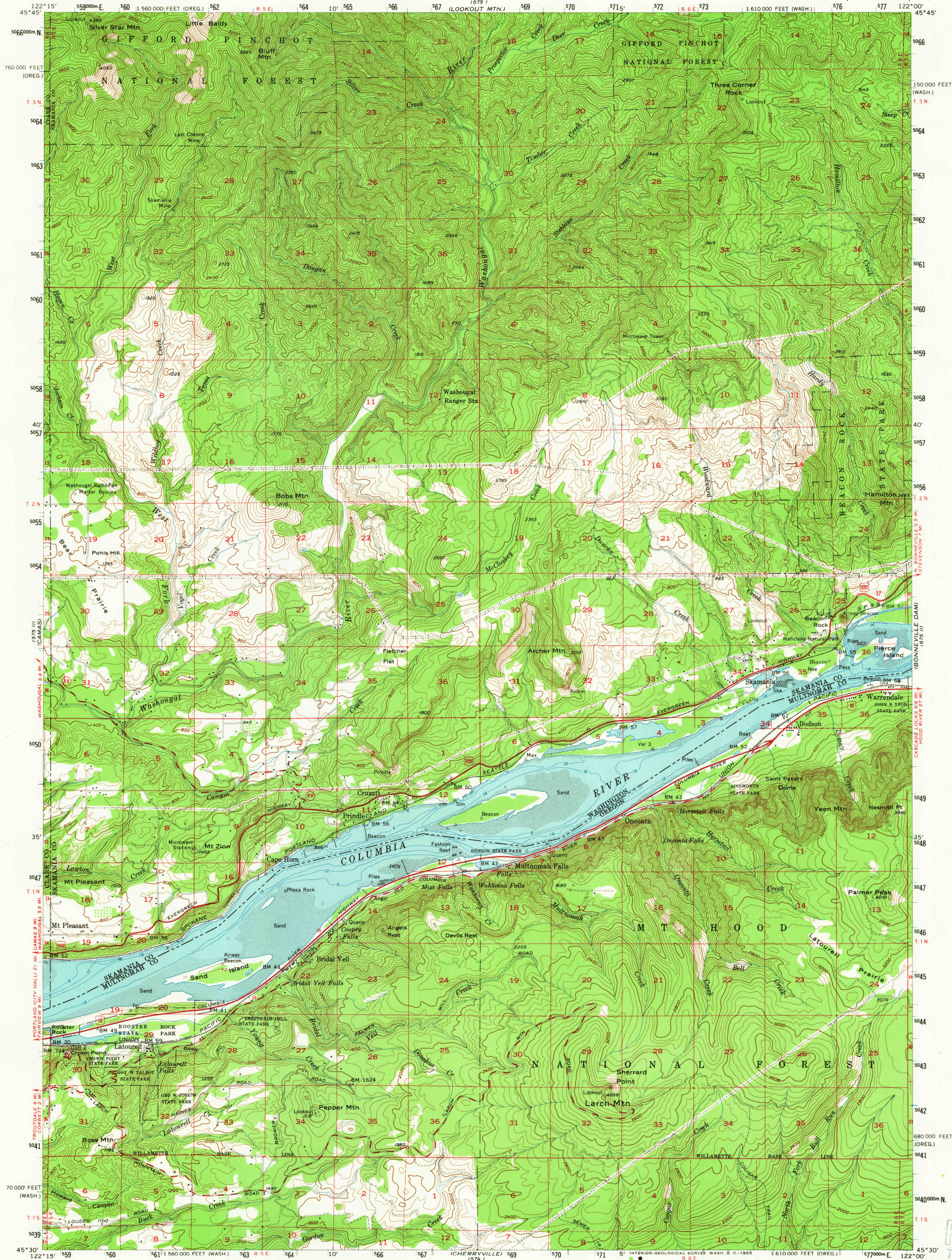
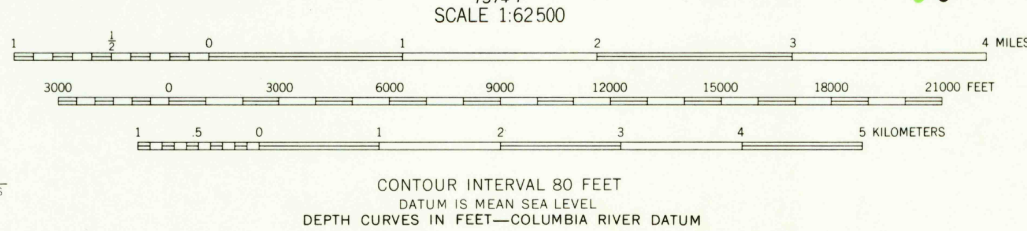


UNITED STATES
DEPARTMENT OF THE INTERIOR
GEOLOGICAL SURVEY

BRIDAL VEIL QUADRANGLE
WASHINGTON-OREGON
15 MINUTE SERIES (TOPOGRAPHIC)



Maped, edited, and published by the Geological Survey
Control by USGS, USC&GS, and State of Oregon
Topography from aerial photographs by Kelsch plotter
Aerial photographs taken 1952. Advance field check 1954
Polyconic projection. 1927 North American datum
10,000-foot grid based on Washington coordinate system,
south zone and Oregon coordinate system, north zone
1000-meter Universal Transverse Mercator grid ticks,
zone 10, shown in blue
Oregon-Washington boundary by interstate agreement
December 1956. Subject to ratification
Hydrography compiled from USC&GS chart 6156 (1953)
Dashed land lines indicate approximate locations



ROAD CLASSIFICATION
Heavy-duty ——— Light-duty ———
Medium-duty ——— Unimproved dirt ———
U.S. Route ——— State Route ———

BRIDAL VEIL, WASH.-OREG.
N 4530—W 12200/15

THIS MAP COMPLIES WITH NATIONAL MAP ACCURACY STANDARDS
FOR SALE BY U.S. GEOLOGICAL SURVEY, DENVER 25, COLORADO OR WASHINGTON 25, D. C.
A FOLDER DESCRIBING TOPOGRAPHIC MAPS AND SYMBOLS IS AVAILABLE ON REQUEST

1954
AMS 1575 II—SERIES V791

USGS DEC 29 1964
Historical File
Topographic Division

U.S.G.S.
FILE COPY
TOPOGRAPHIC DIVISION

4505