

SHOALWATER (CAPE)

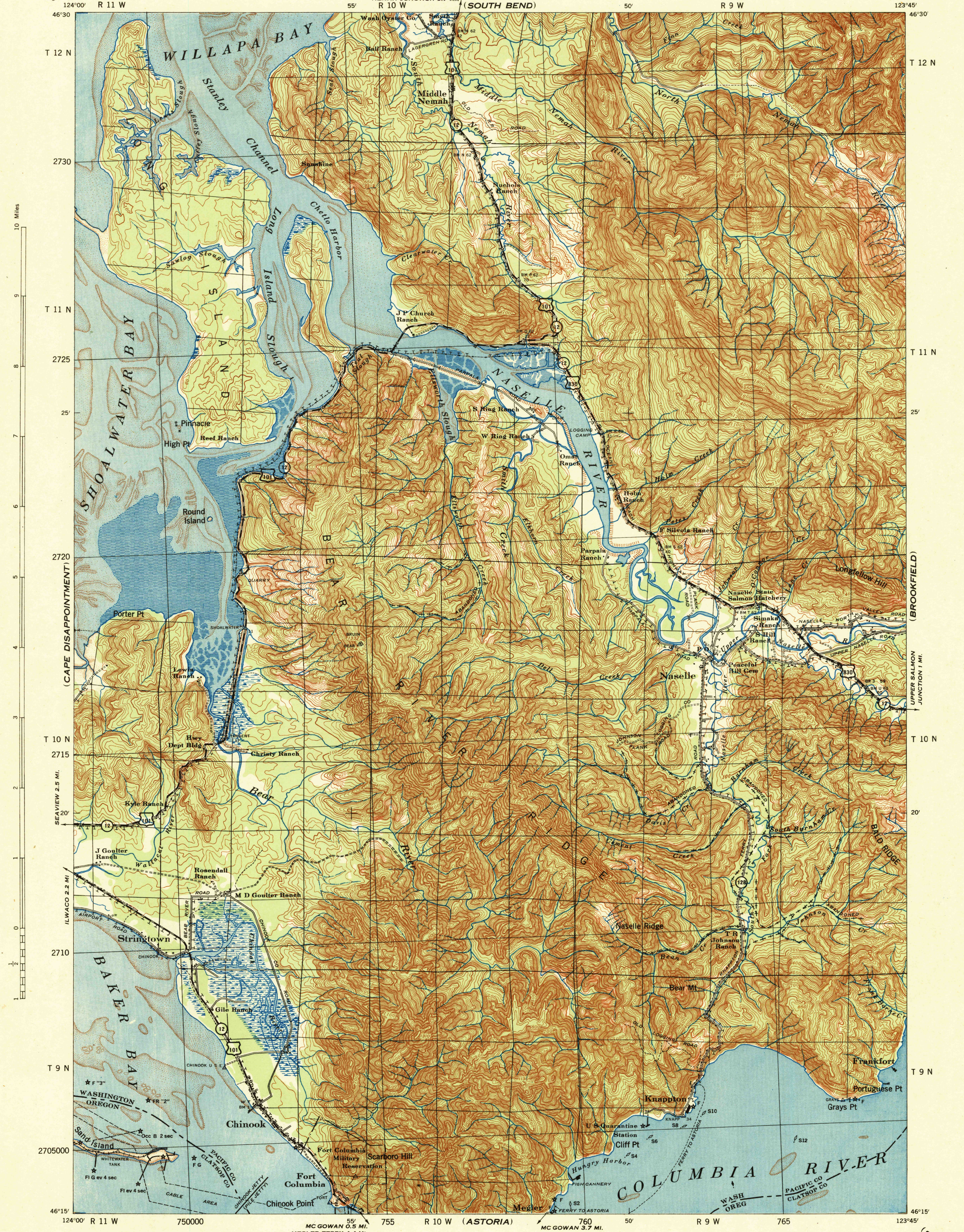
WASHINGTON-OREGON  
FORT COLUMBIA QUADRANGLE  
GRID ZONE "G"

WAR DEPARTMENT  
CORPS OF ENGINEERS, U. S. ARMY

Advance edition  
Subject to correction

WASHINGTON-OREGON  
FORT COLUMBIA QUADRANGLE  
GRID ZONE "G"

(WILLAPA)

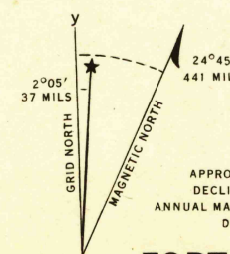


Prepared under the direction of the Chief of Engineers, U. S. Army, 1938.  
Horizontal control by U. S. Coast and Geodetic Survey, 1925-35 and  
29th Engineers, U. S. Army, 1937.  
Vertical control by U. S. Coast and Geodetic Survey, 1934  
and 29th Engineers, U. S. Army, 1937.  
Topography by 29th Engineers, U. S. Army, 1938, from 5-lens  
aerial photographs, using stereo-comparagraph and elevation calculators  
Polyconic Projection, North American Datum 1927.

ROAD CLASSIFICATION  
Dependable hard-surface,  
heavy-duty road. ——— U. S. Route 160  
Secondary, hard-surface,  
all-weather road. ——— State Route 30  
More than two lanes indicated by note along road with tick at point of change. ——— 3 LANE 4 LANE

Scale 1/62500  
1 2 3 Miles  
1000 500 0 1000 2000 3000 4000 5000 Yards  
CONTOUR INTERVAL 20 FEET  
DATUM IS MEAN SEA LEVEL  
FIVE THOUSAND YARD GRID COMPUTED FROM "GRID SYSTEM FOR PROGRESSIVE MAPS  
IN THE U. S." ZONE G, U. S. C. & G. S. SPECIAL PUBLICATION NO. 59  
THE LAST THREE DIGITS OF THE GRID NUMBERS ARE OMITTED

NOTE: OFFICERS USING THIS MAP WILL MARK HEREON CORRECTIONS AND ADDITIONS WHICH COME  
TO THEIR ATTENTION AND MAIL DIRECT TO "THE CHIEF OF ENGINEERS, WASHINGTON, D. C."



FORT COLUMBIA WASH.-OREG.  
N4615-W12345/15

ARMY MAP SERVICE, U. S. ARMY, WASHINGTON, D. C., 101749  
3-43 1943

U. S. G. S.  
FILE COPY  
Inspection and Editing

USGS  
Historical File  
Topographic Division