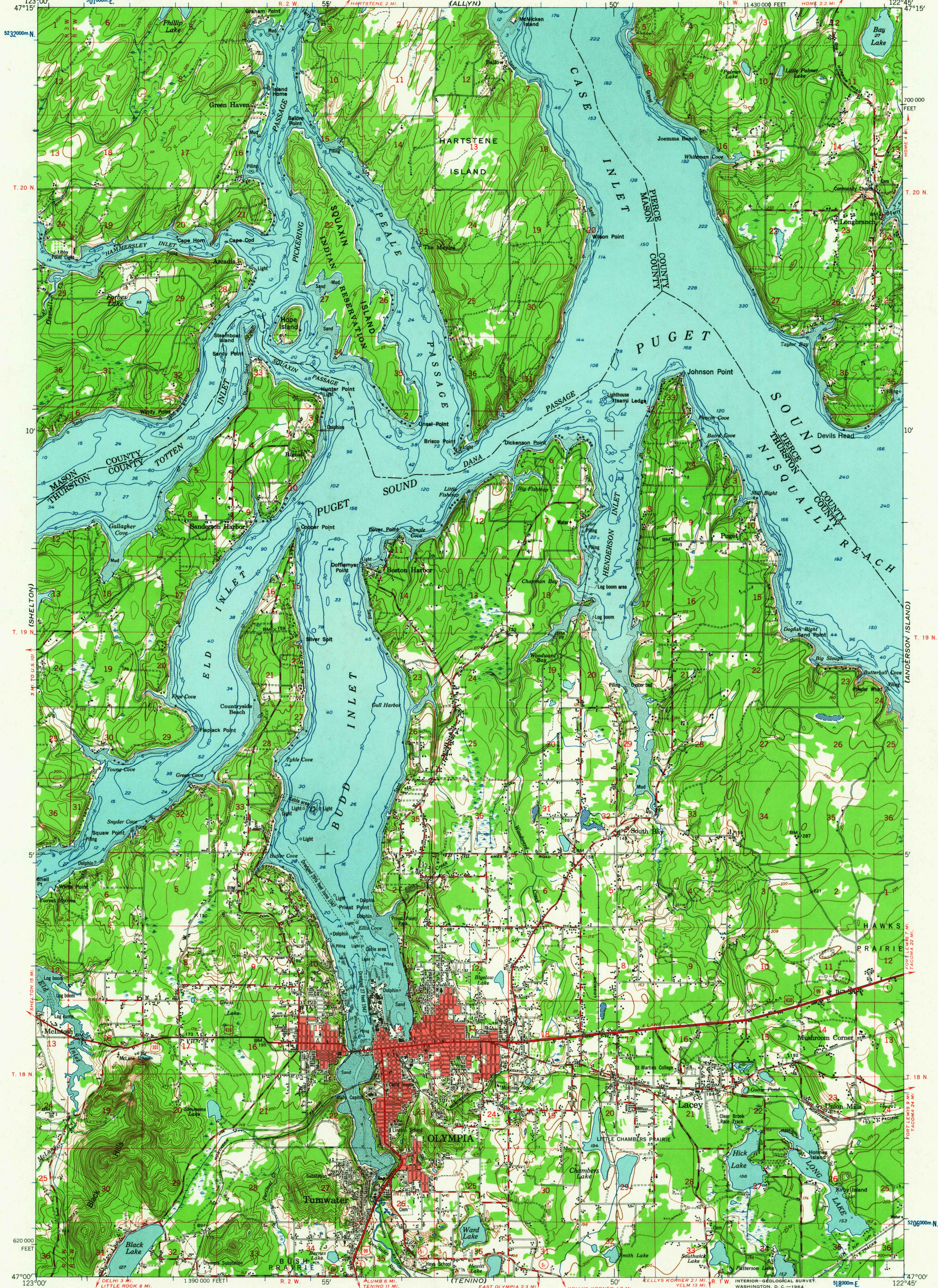


UNITED STATES  
DEPARTMENT OF THE INTERIOR  
GEOLOGICAL SURVEY

UNITED STATES  
DEPARTMENT OF THE ARMY  
CORPS OF ENGINEERS  
(ALLYN)

OLYMPIA QUADRANGLE  
WASHINGTON  
15 MINUTE SERIES (TOPOGRAPHIC)



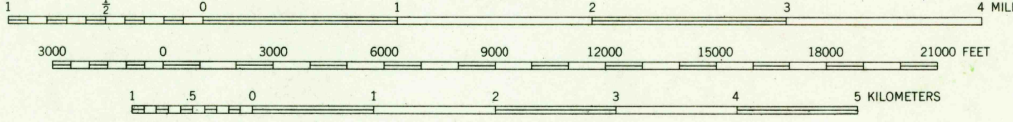
Map by the Geological Survey  
Revised by the Army Map Service  
Published for civil use by the Geological Survey

Control by USGS, USC&GS, and USCE

Topography by planetable surveys 1934  
Planimetric detail revised from aerial photographs  
taken 1947. Field check 1949  
Hydrography compiled from USC&GS charts

Polyconic projection. 1927 North American datum  
10,000-foot grid based on Washington coordinate system,  
south zone  
1000-meter Universal Transverse Mercator grid ticks,  
zone 10, shown in blue

Red tint indicates areas in which only  
landmark buildings are shown  
No distinction is made between barns, dwellings,  
commercial and industrial buildings  
Unchecked elevations are shown in brown



CONTOUR INTERVAL 25 FEET  
DATUM IS MEAN SEA LEVEL  
DEPTH CURVES AND SOUNDINGS IN FEET—DATUM IS MEAN LOWER LOW WATER  
SHORELINE SHOWN REPRESENTS THE APPROXIMATE LINE OF MEAN HIGH WATER  
THE MEAN RANGE OF TIDE IS APPROXIMATELY 13 FEET

FOR SALE BY U. S. GEOLOGICAL SURVEY, DENVER 25, COLORADO OR WASHINGTON 25, D. C.  
A FOLDER DESCRIBING TOPOGRAPHIC MAPS AND SYMBOLS IS AVAILABLE ON REQUEST

ROAD CLASSIFICATION  
Heavy-duty ——— Light-duty ———  
Medium-duty ——— Unimproved dirt ———  
U. S. Route ——— State Route ———



OLYMPIA, WASH.  
N4700-W12245/15

USGS  
Historical File  
Topographic Division

1949

TOPOGRAPHIC DIVISION

5 1964