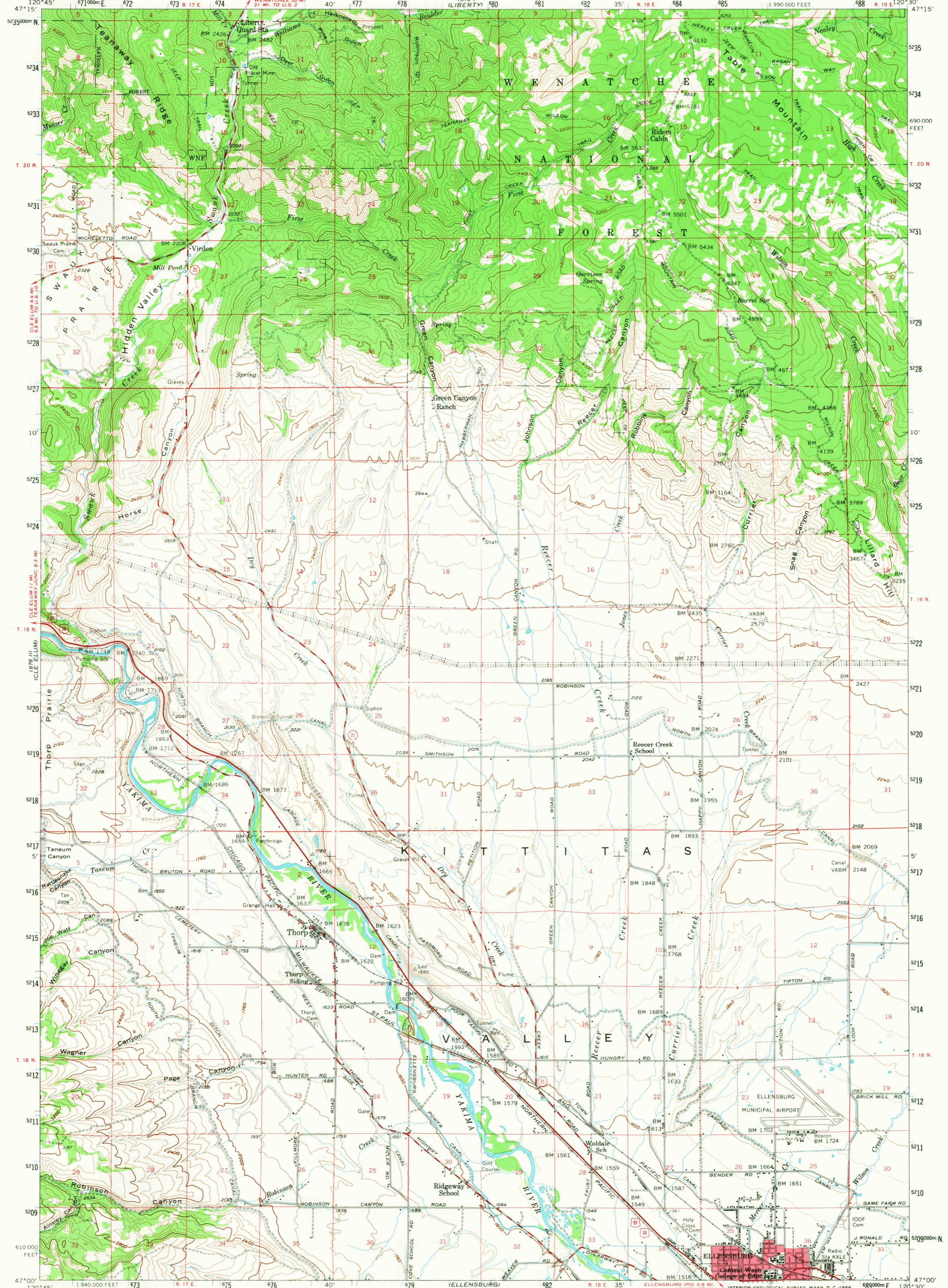


120°45' 47°15' N

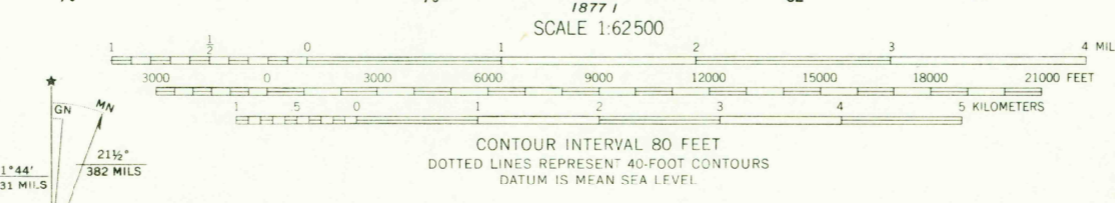
UNITED STATES
DEPARTMENT OF THE INTERIOR
GEOLOGICAL SURVEY

THORP QUADRANGLE
WASHINGTON-KITTITAS CO.
15 MINUTE SERIES (TOPOGRAPHIC)

120°45' 47°15' N



Maped, edited, and published by the Geological Survey
Control by USGS and USC&GS
Topography from aerial photographs by photogrammetric methods
Aerial photographs taken 1956. Field check 1958
Polyconic projection. 1927 North American datum
10,000-foot grid based on Washington coordinate system, south zone
1000-meter Universal Transverse Mercator grid ticks,
zone 10, shown in blue
Red tint indicates area in which only
landmark buildings are shown
Dashed land lines indicate approximate locations
Unchecked elevations are shown in brown



THIS MAP COMPLIES WITH NATIONAL MAP ACCURACY STANDARDS
FOR SALE BY U.S. GEOLOGICAL SURVEY, DENVER, COLORADO 80225 OR WASHINGTON, D. C. 20242
A FOLDER DESCRIBING TOPOGRAPHIC MAPS AND SYMBOLS IS AVAILABLE ON REQUEST

ROAD CLASSIFICATION

Heavy-duty	Light-duty
Medium-duty	Unimproved dirt
U.S. Route	State Route

U.S.G.S. TOPOGRAPHIC DIVISION

THE SOUTH HALF OF THIS AREA ALSO COVERED BY
1:24,000-SCALE MAPS OF THORP AND ELLENSBURG
NORTH 7.5-MINUTE QUADRANGLES, SURVEYED 1958

THORP, WASH.
N4700-W12030/15

1958

AMS 1878 II-SERIES V791

USGS
Historical File
Topographic Division

4155

FEB 24 1966