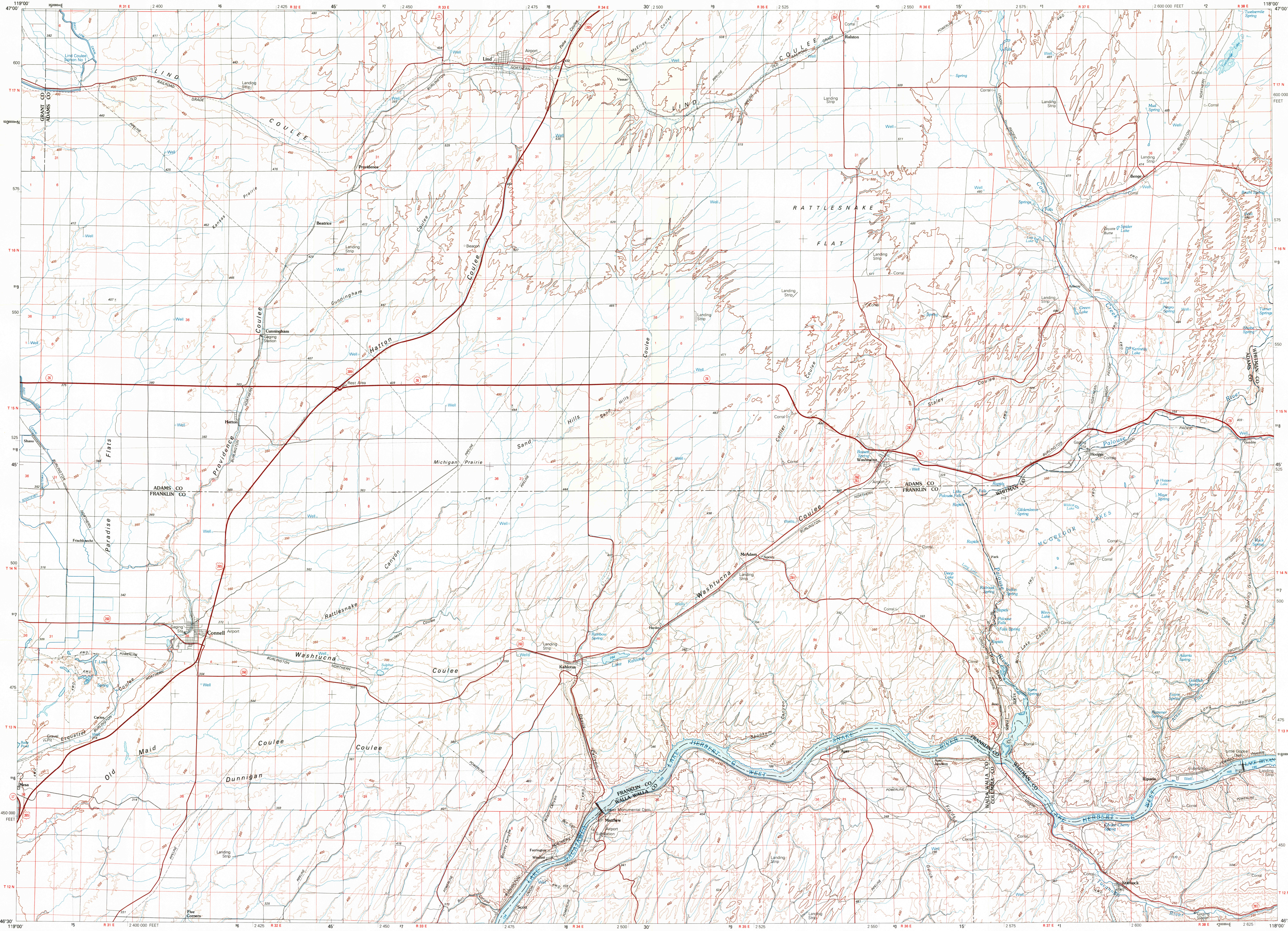
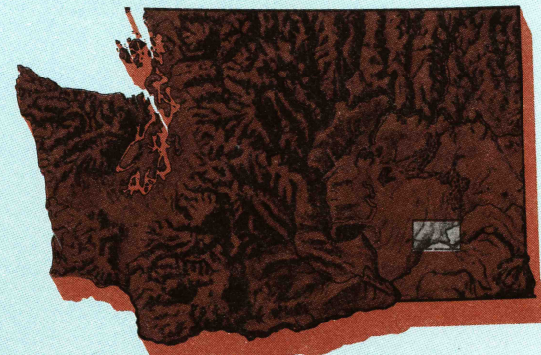


CONNELL, WASHINGTON

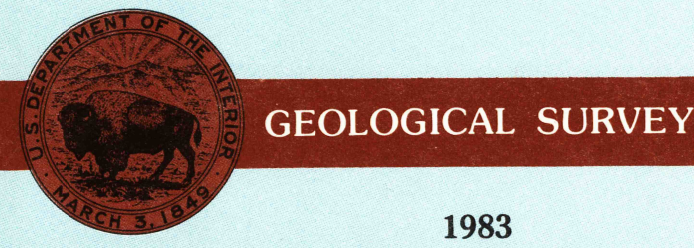


1:100 000-scale metric  
topographic map of  
**Connell**  
WASHINGTON



30 X 60 MINUTE QUADRANGLE  
SHOWING

- Contours and elevations in meters
- Highways, roads and other manmade structures
- Water features
- Woodland areas
- Geographic names




Produced by the United States Geological Survey

Compiled from USGS 1:24 000-scale topographic maps dated 1970-1981. Planimetry revised from aerial photographs taken 1980 and other source data. Revised information not field checked. Map edited 1983.  
Projection and 10 000-meter grid, zone 11, Universal Transverse Mercator  
25 000-foot grid ticks based on Washington coordinate system, south zone, 1927 North American Datum  
To place on the predicted North American Datum 1983 move the projection lines 18 meters north and 83 meters east  
There may be private inholdings within the boundaries of the National or State reservations shown on this map

CONTOUR INTERVAL 50 METERS  
NATIONAL GEODETIC VERTICAL DATUM OF 1929

THIS MAP COMPLIES WITH NATIONAL MAP ACCURACY STANDARDS

CONVERSION TABLE		DECLINATION DIAGRAM		ADJOINING MAPS		
Meters	Feet			1	2	3
1	3.2808	<p>UTM grid convergence (GN) and 1983 magnetic declination (MN) at center of map Diagram is approximate</p>	4	4	5	
2	6.5617		6	7	8	
3	9.8425					
4	13.1234					
5	16.4042					
6	19.6850					
7	22.9659					
8	26.2467					
9	29.5276					
10	32.8084					
To convert meters to feet multiply by 3.2808				1	Moses Lake	
To convert feet to meters multiply by 0.3048				2	Ritzville	
				3	Rosalia	
				4	Ross Rapids	
				5	Pullman	
				6	Richland	
				7	Walla Walla	
				8	Clarkston	

FOR SALE BY U. S. GEOLOGICAL SURVEY, DENVER, COLORADO 80225  
OR RESTON, VIRGINIA 22092

Topographic Map Symbols

Primary highway, hard surface	
Secondary highway, hard surface	
Light duty road, principal street, hard or improved surface	
Other road or street; trail	
Route marker: interstate; U. S.; State	
Railroad: standard gage; narrow gage	
Bridge: overpass; underpass	
Tunnel: road; railroad	
Built up area; locality; elevation	
Airport; landing field; landing strip	
National boundary	
State boundary	
County boundary	
National or State reservation boundary	
Land grant boundary	
U. S. public lands survey: range, township, section	
Range, township, section line: protracted	
Power transmission line: pipeline	
Dam; dam with lock	
Cemetery; building	
Windmill; water well; spring	
Mine shaft; adit or cave; mine, quarry; gravel pit	
Campground; picnic area; U. S. location monument	
Ruins; cliff dwelling	
Distorted surface: strip mine, lava; sand	
Contours: index; intermediate; supplementary	
Bathymetric contours: index; intermediate	
Stream, lake: perennial; intermittent	
Rapids, large and small; falls, large and small	
Area to be submerged; marsh, swamp	
Land subject to controlled inundation; woodland	
Scrub; mangrove	
Orchard; vineyard	

A pamphlet describing topographic maps is available on request