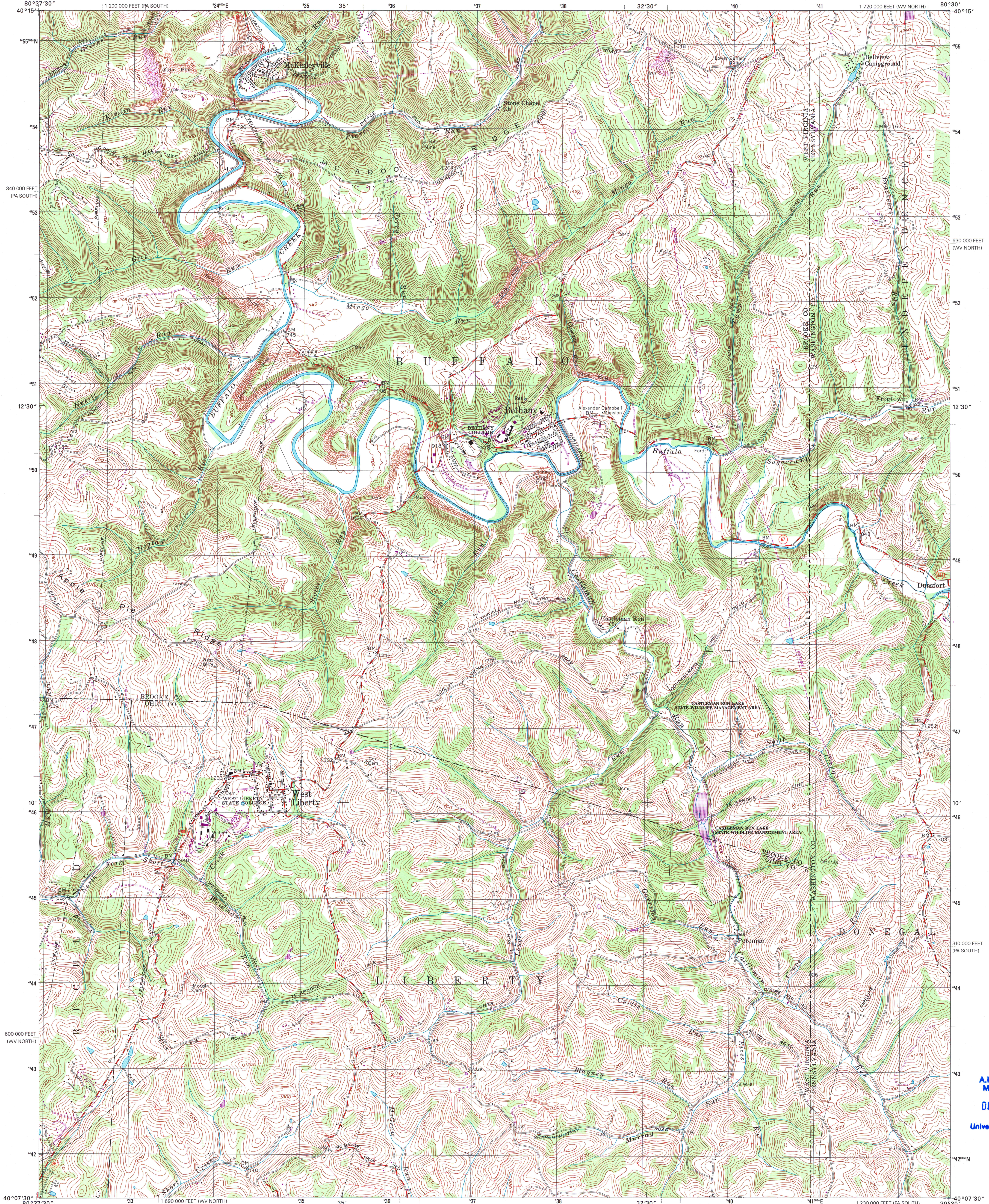




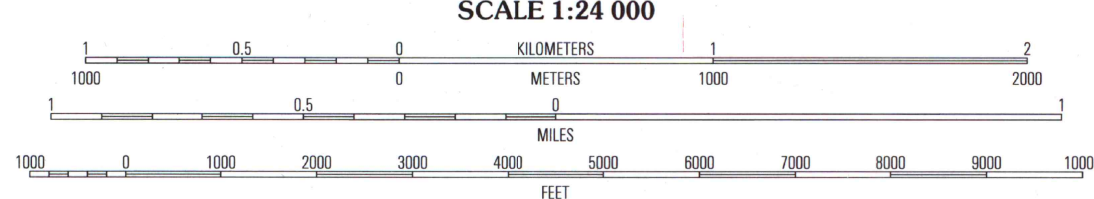
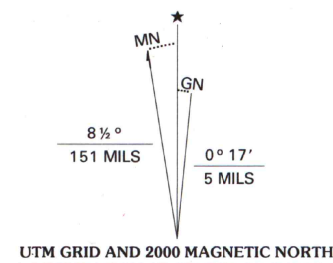
U.S. DEPARTMENT OF THE INTERIOR
U.S. GEOLOGICAL SURVEY

STATE OF WEST VIRGINIA
REPRESENTED BY THE
STATE OF WEST VIRGINIA GEOLOGICAL AND ECONOMIC SURVEY
AND OTHER STATE AGENCIES

BETHANY QUADRANGLE
WEST VIRGINIA-PENNSYLVANIA
7.5-MINUTE SERIES (TOPOGRAPHIC)

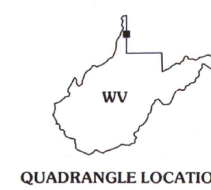


Produced by the United States Geological Survey
Topography compiled 1956. Planimetry derived from imagery taken 1977 and other sources. Photomaps using imagery dated 1997; no major culture or drainage changes observed. Survey control current as of 1959. Boundaries, other than corporate, revised 2000
North American Datum of 1927 (NAD 27). Projection and 10 000-foot ticks: West Virginia coordinate system, north zone (Lambert conformal cone)
10 000-foot ticks: West Virginia coordinate system, north zone and Pennsylvania coordinate system, south zone
1000-meter Universal Transverse Mercator grid, zone 17
North American Datum of 1983 (NAD 83) is shown by dashed corner ticks. The values of the shift between NAD 27 and NAD 83 for 7.5-minute intersections are obtainable from National Geodetic Survey NADCON software
There may be private inholdings within the boundaries of the National or State reservations shown on this map
Information shown in purple may not meet USGS content standards and may conflict with previously mapped contours



CONTOUR INTERVAL 20 FEET
NATIONAL GEODETIC VERTICAL DATUM OF 1929
TO CONVERT FROM FEET TO METERS, MULTIPLY BY 0.3048

U.S. Regional
Depository Copy
DO NOT DISCARD



QUADRANGLE LOCATION

ROAD CLASSIFICATION
Primary highway Light-duty road, hard or improved surface
Secondary highway Unimproved road
Interstate Route U.S. Route State Route

1	2	3	1 Steubenville West
			2 Steubenville East
			3 Avella
4		5	4 Titonsville
			5 West Middletown
			6 Whiting
6	7	8	7 Valley Grove
			8 Clayville

ADJOINING 7.5 QUADRANGLE NAMES

BETHANY, WV-PA
1997

NIMA 4864 II NE-SERIES V854



A.H. ROBINSON
MAP LIBRARY
DEC 22 2000
University of Wisconsin
Madison