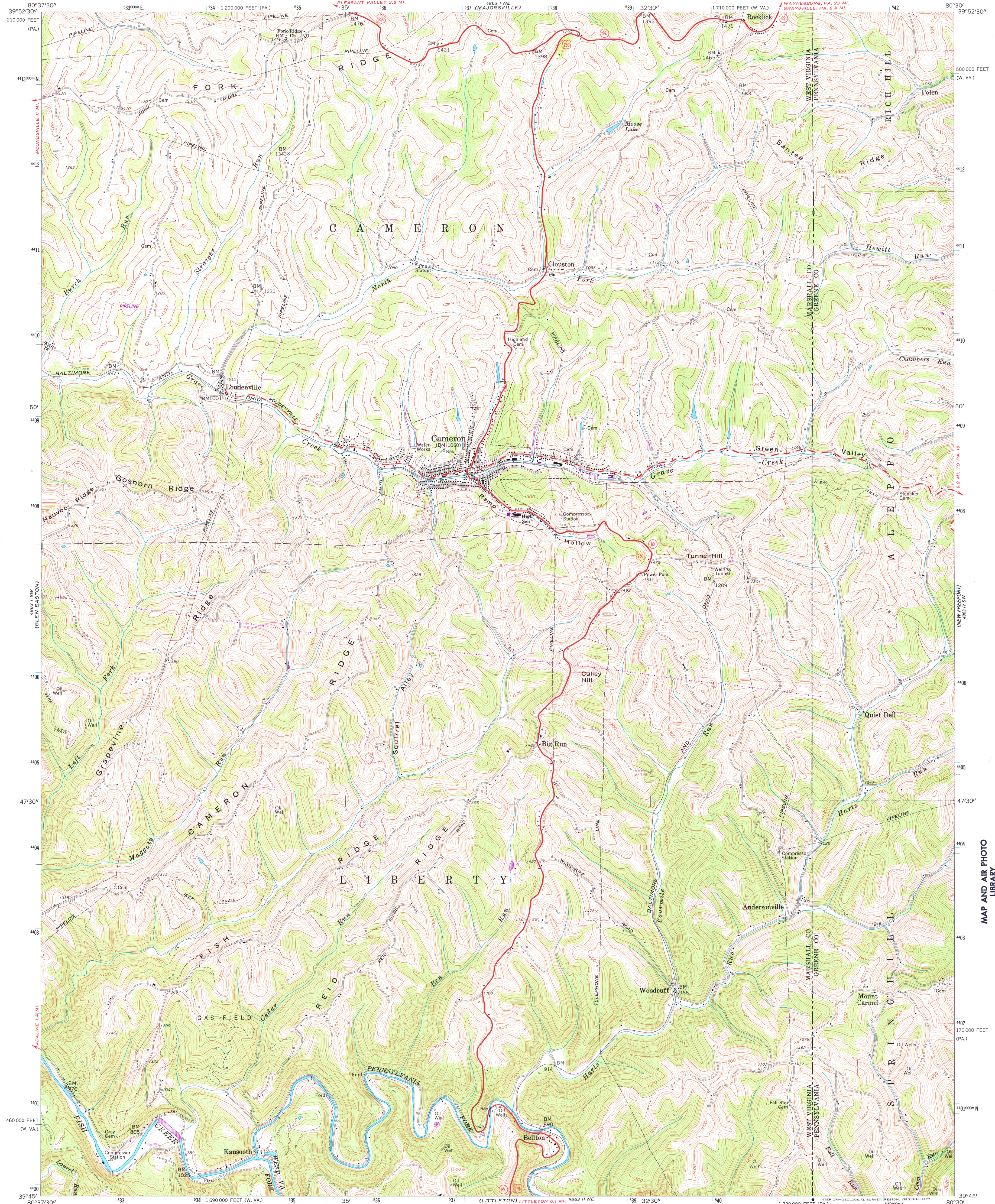


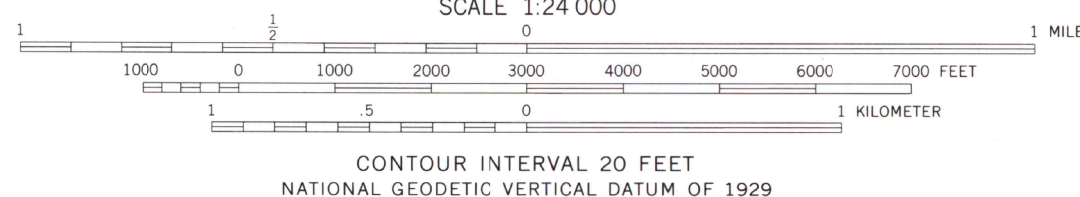
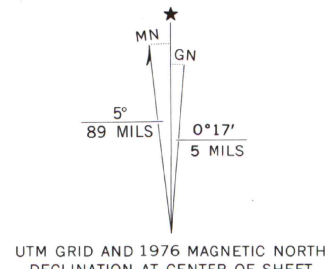
UNITED STATES
DEPARTMENT OF THE INTERIOR
GEOLOGICAL SURVEY

STATE OF WEST VIRGINIA
REPRESENTED BY THE
STATE OF WEST VIRGINIA GEOLOGICAL SURVEY
AND OTHER STATE AGENCIES

CAMERON QUADRANGLE
WEST VIRGINIA-PENNSYLVANIA
7.5 MINUTE SERIES (TOPOGRAPHIC)
SE/4 CAMERON 15' QUADRANGLE



Mapped, edited, and published by the Geological Survey
Control by USGS and USC&GS
Topography from aerial photographs by photogrammetric methods
Aerial photographs taken 1956. Field check 1960
Polyconic projection. 1927 North American datum
10,000-foot grids based on West Virginia coordinate system,
north zone, and Pennsylvania coordinate system, south zone
1000-meter Universal Transverse Mercator grid ticks,
zone 17, shown in blue
Fine red dashed lines indicate selected fence and field lines where
generally visible on aerial photographs. This information is unchecked
Unlabeled wells are gas wells



ROAD CLASSIFICATION
Heavy-duty ——— Light-duty ———
Medium-duty ——— Unimproved dirt ———
U.S. Route ——— State Route ———

CAMERON, W. VA.—PA.
SE/4 CAMERON 15' QUADRANGLE
N3945—W8030/7.5
1960
PHOTOREVISED 1976
AMS 4863 1 SE—SERIES V854