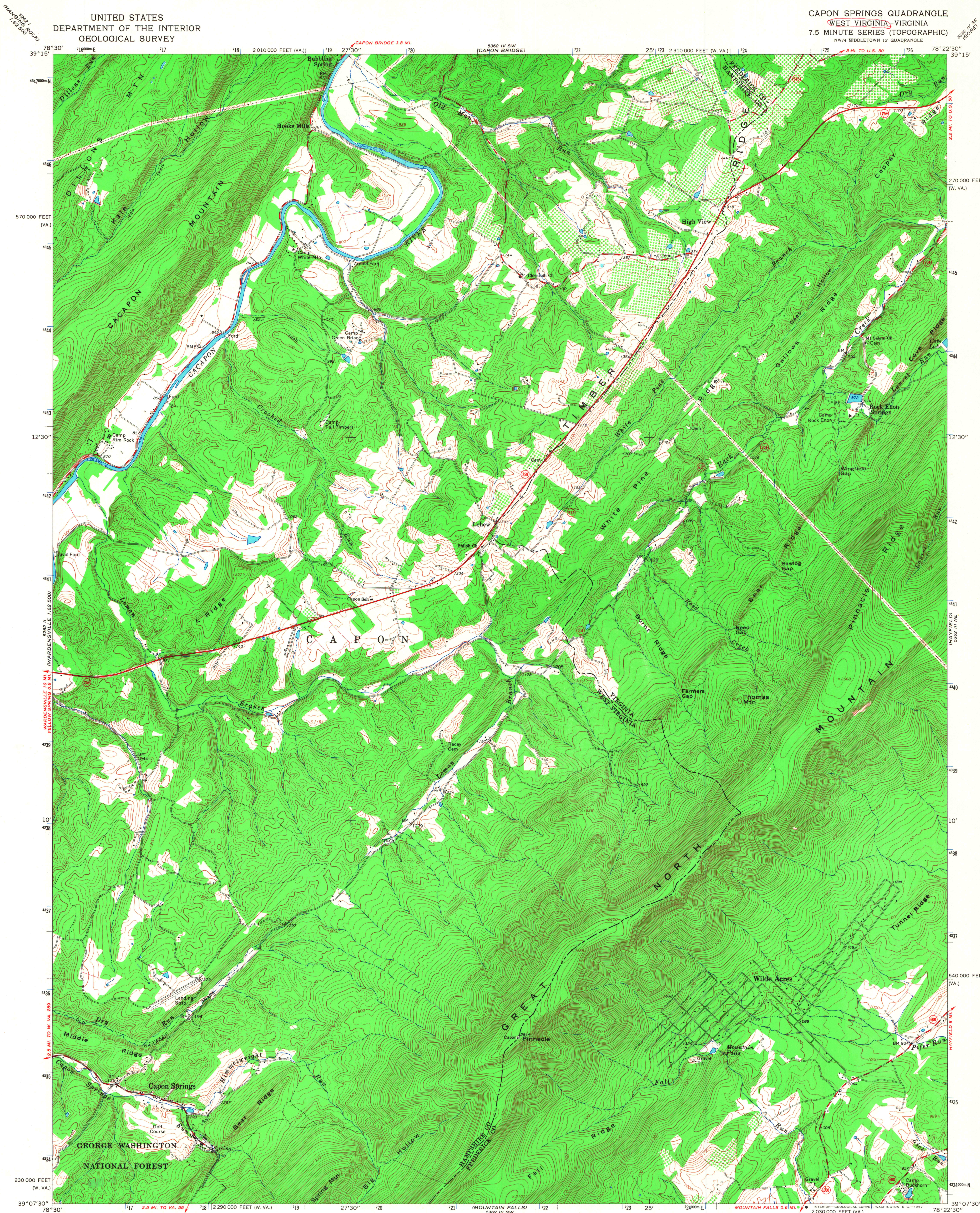
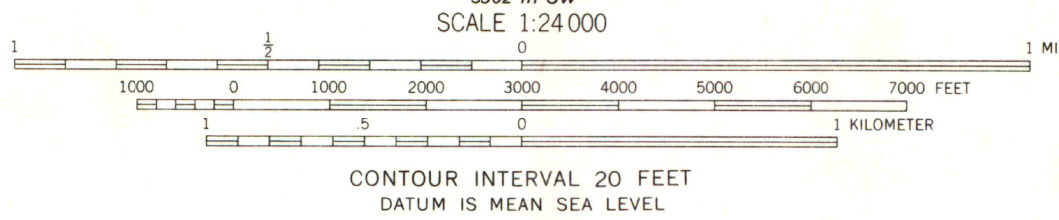
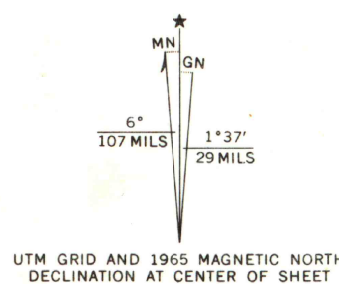


UNITED STATES
DEPARTMENT OF THE INTERIOR
GEOLOGICAL SURVEY

CAPON SPRINGS QUADRANGLE
WEST VIRGINIA-VIRGINIA
7.5 MINUTE SERIES (TOPOGRAPHIC)
NW/4 MIDDLETOWN 15' QUADRANGLE



Mapped, edited, and published by the Geological Survey
in cooperation with Virginia Division of Mineral Resources
Control by USGS and USC&GS
Topography by photogrammetric methods from aerial
photographs taken 1963. Field checked 1965
Polyconic projection, 1927 North American datum
10,000-foot grids based on West Virginia coordinate system, north zone,
and Virginia coordinate system, north zone
1000-meter Universal Transverse Mercator grid ticks, zone 17,
shown in blue
Fine red dashed lines indicate selected fence and field lines where
generally visible on aerial photographs. This information is unchecked



THIS MAP COMPLIES WITH NATIONAL MAP ACCURACY STANDARDS
FOR SALE BY U.S. GEOLOGICAL SURVEY, WASHINGTON, D. C. 20242
AND VIRGINIA DIVISION OF MINERAL RESOURCES, CHARLOTTESVILLE, VIRGINIA 22903
A FOLDER DESCRIBING TOPOGRAPHIC MAPS AND SYMBOLS IS AVAILABLE ON REQUEST

MAP AND AIR PHOTO LIBRARY
University of Wisconsin



ROAD CLASSIFICATION
Heavy-duty ——— Light-duty ———
Medium-duty ——— Unimproved dirt ———
State Route ———

CAPON SPRINGS, W. VA.-VA.
NW/4 MIDDLETOWN 15' QUADRANGLE
N3907.5-W7822.5/7.5

1965

AMS 5362 III NW-SERIES Y854