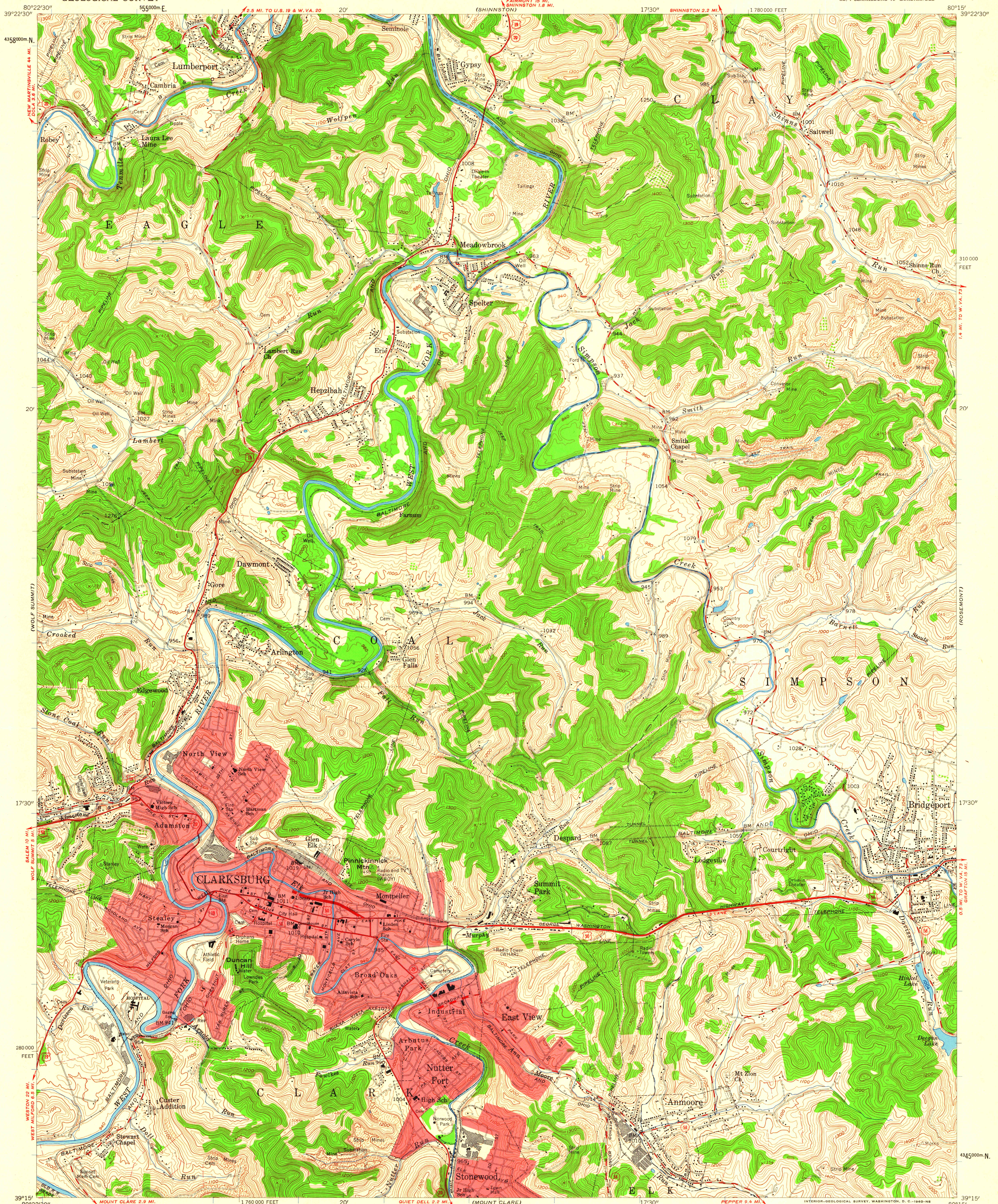


UNITED STATES
DEPARTMENT OF THE INTERIOR
GEOLOGICAL SURVEY

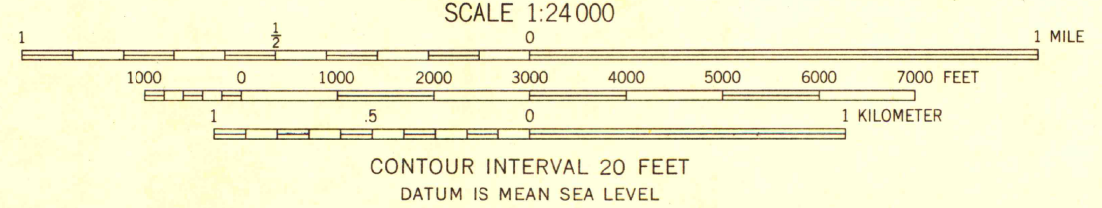
CLARKSBURG QUADRANGLE
WEST VIRGINIA—HARRISON CO.
7.5 MINUTE SERIES (TOPOGRAPHIC)
SE 1/4 CLARKSBURG 15' QUADRANGLE



Mapped, edited, and published by the Geological Survey

Control by USGS and USC&GS
Topography from aerial photographs by photogrammetric methods
Aerial photographs taken 1955. Field check 1958
Polyconic projection. 1927 North American datum
10,000-foot grid based on West Virginia coordinate system,
north zone
1000-meter Universal Transverse Mercator grid ticks,
zone 17, shown in blue
Red tint indicates areas in which only landmark buildings are shown
Fine red dashed lines indicate selected fence and field lines
visible on aerial photographs. This information is unchecked
Unlabelled wells are gas wells
Unchecked elevations are shown in brown

TRUE NORTH
MAGNETIC NORTH
APPROXIMATE MEAN
DECLINATION, 1958



ROAD CLASSIFICATION
Heavy-duty ——— Light-duty ———
Medium-duty ——— Unimproved dirt ———
U. S. Route ——— State Route ———



THIS MAP COMPLIES WITH NATIONAL MAP ACCURACY STANDARDS
FOR SALE BY U. S. GEOLOGICAL SURVEY, WASHINGTON 25, D. C.
A FOLDER DESCRIBING TOPOGRAPHIC MAPS AND SYMBOLS IS AVAILABLE ON REQUEST

CLARKSBURG, W. VA.
SE 1/4 CLARKSBURG 15' QUADRANGLE
N 3915—W 8015/7.5

1958

MAP AND AIR PHOTO LIBRARY
University of Wisconsin