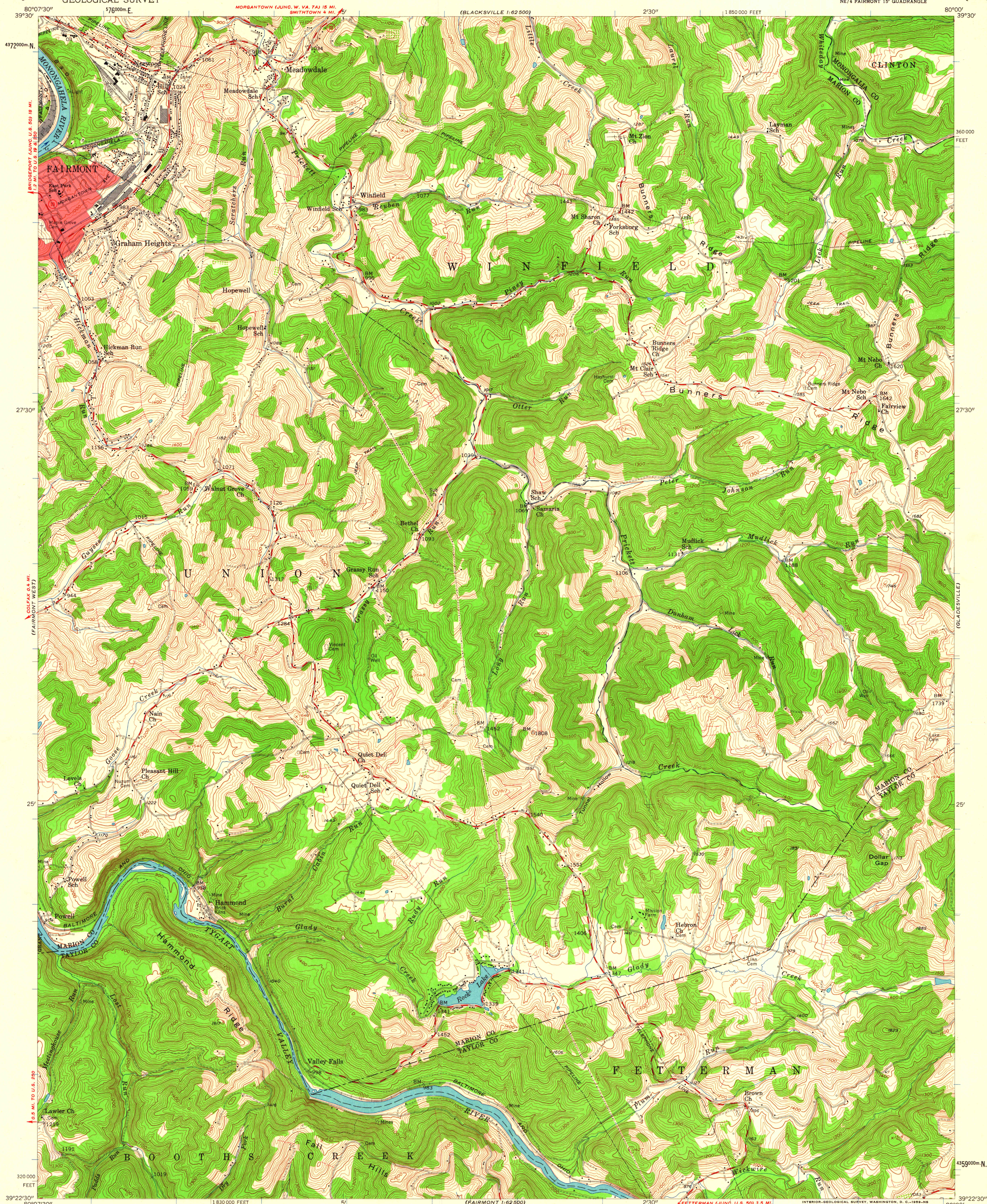


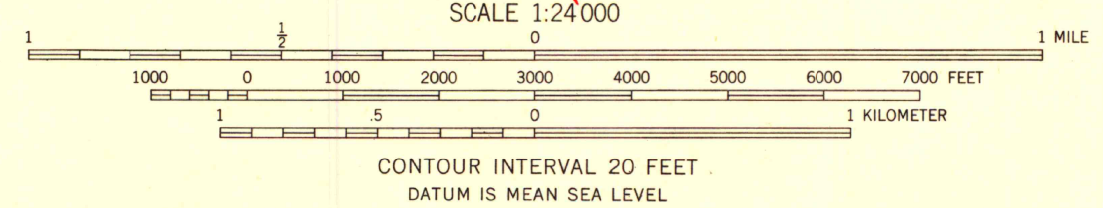
UNITED STATES
DEPARTMENT OF THE INTERIOR
GEOLOGICAL SURVEY

FAIRMONT EAST QUADRANGLE
WEST VIRGINIA
7.5 MINUTE SERIES (TOPOGRAPHIC)
NE 1/4 FAIRMONT 15' QUADRANGLE

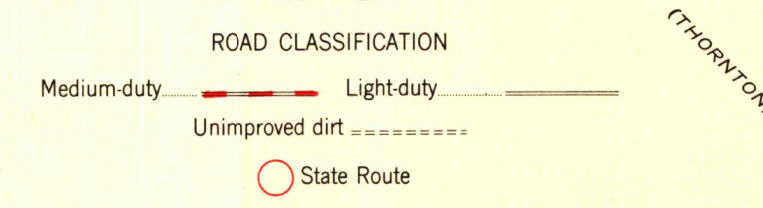


Mapped, edited, and published by the Geological Survey
Control by USGS and USC&GS

Topography from aerial photographs by photogrammetric methods
Aerial photographs taken 1955. Field check 1958
Polyconic projection. 1927 North American datum
10,000-foot grid based on West Virginia coordinate system,
north zone
1000-meter Universal Transverse Mercator grid ticks,
zone 17, shown in blue
Fine red dashed lines indicate selected fence and field lines
visible on aerial photographs. This information is unchecked
Red tint indicates area in which only
landmark buildings are shown
Unlabelled wells are gas wells
Unchecked elevations are shown in brown



THIS MAP COMPLIES WITH NATIONAL MAP ACCURACY STANDARDS
FOR SALE BY U. S. GEOLOGICAL SURVEY, WASHINGTON 25, D. C.
A FOLDER DESCRIBING TOPOGRAPHIC MAPS AND SYMBOLS IS AVAILABLE ON REQUEST



FAIRMONT EAST, W. VA.
NE 1/4 FAIRMONT 15' QUADRANGLE
N 39° 22' 30" - W 80° 00' 00"

1958
MAP AND AIR PHOTO LIBRARY
University of Wisconsin